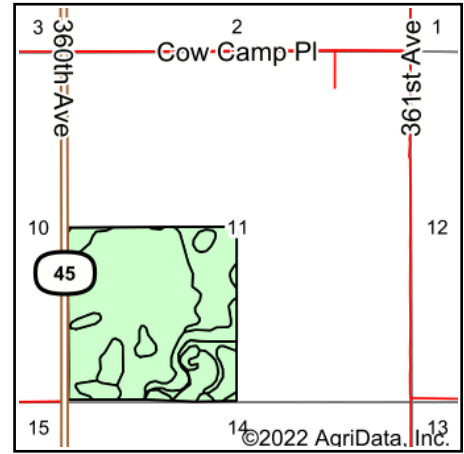
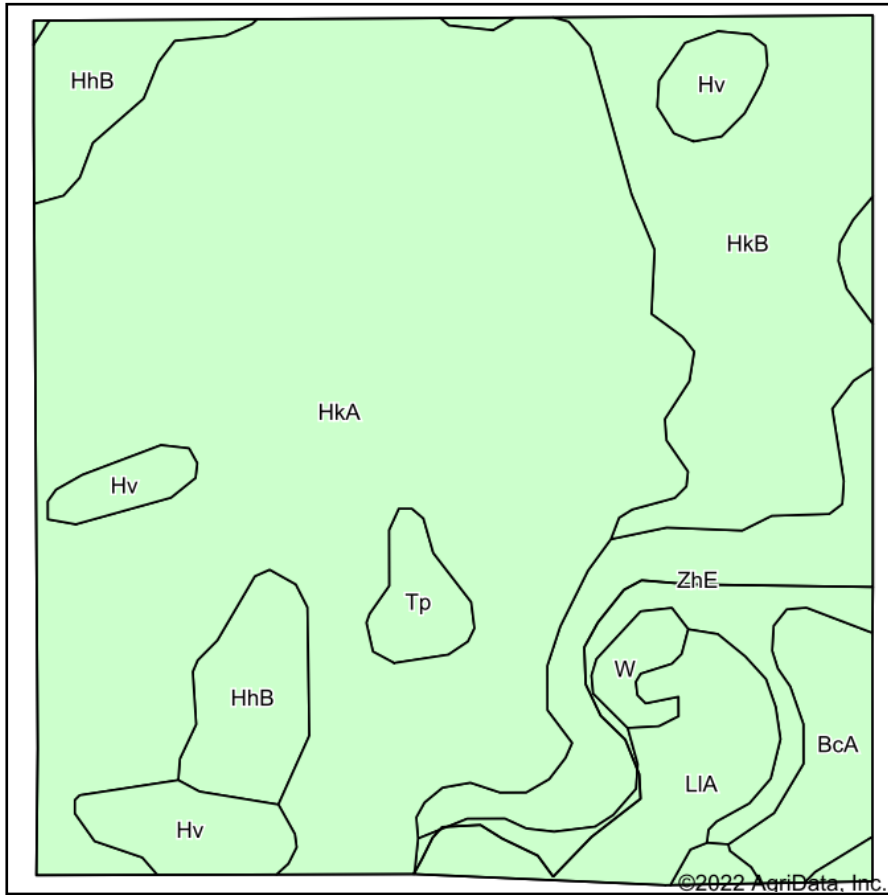


# Soils Map



State: **South Dakota**  
 County: **Hand**  
 Location: **11-111N-68W**  
 Township: **Logan**  
 Acres: **153.78**  
 Date: **6/2/2022**

**ADVANTAGE**  
*Land Co.*

Maps Provided By:  
  
 © AgriData, Inc. 2021 www.AgriDataInc.com



Area Symbol: SD059, Soil Area Version: 23

| Code                    | Soil Description   | Acres | Percent of field | Non-Irr Class *c | Productivity Index |
|-------------------------|--|-------|------------------|------------------|--------------------|
| HkA                     | Houdek-Prosper loams, 0 to 2 percent slopes                    | 87.60 | 57.0%            | IIc              | 88                 |
| HkB                     | Houdek-Prosper loams, 1 to 6 percent slopes                    | 21.40 | 13.9%            | Ile              | 84                 |
| ZhE                     | Betts-Ethan loams, 15 to 40 percent slopes                     | 12.60 | 8.2%             | VIIe             | 18                 |
| HhB                     | Houdek loam, 2 to 6 percent slopes                             | 9.08  | 5.9%             | Ile              | 81                 |
| LIA                     | Bon loam, channeled, 0 to 2 percent slopes, frequently flooded | 7.85  | 5.1%             | VIw              | 34                 |
| Hv                      | Hoven silt loam, 0 to 1 percent slopes                         | 6.60  | 4.3%             | VIIs             | 15                 |
| BcA                     | Prosper-Stickney loams, nearly level                           | 4.99  | 3.2%             | IIc              | 84                 |
| Tp                      | Tetonka silt loam, 0 to 1 percent slopes                       | 2.18  | 1.4%             | IVw              | 56                 |
| W                       | Water  | 1.48  | 1.0%             | VIII             | 0                  |
| <b>Weighted Average</b> |  |       |                  | <b>2.87</b>      | <b>74</b>          |

\*c: Using Capabilities Class Dominant Condition Aggregation Method  
 Soils data provided by USDA and NRCS.