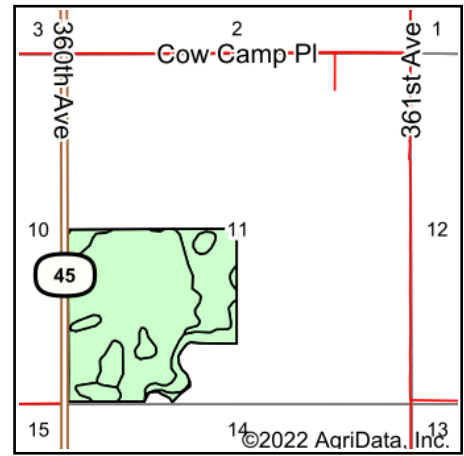
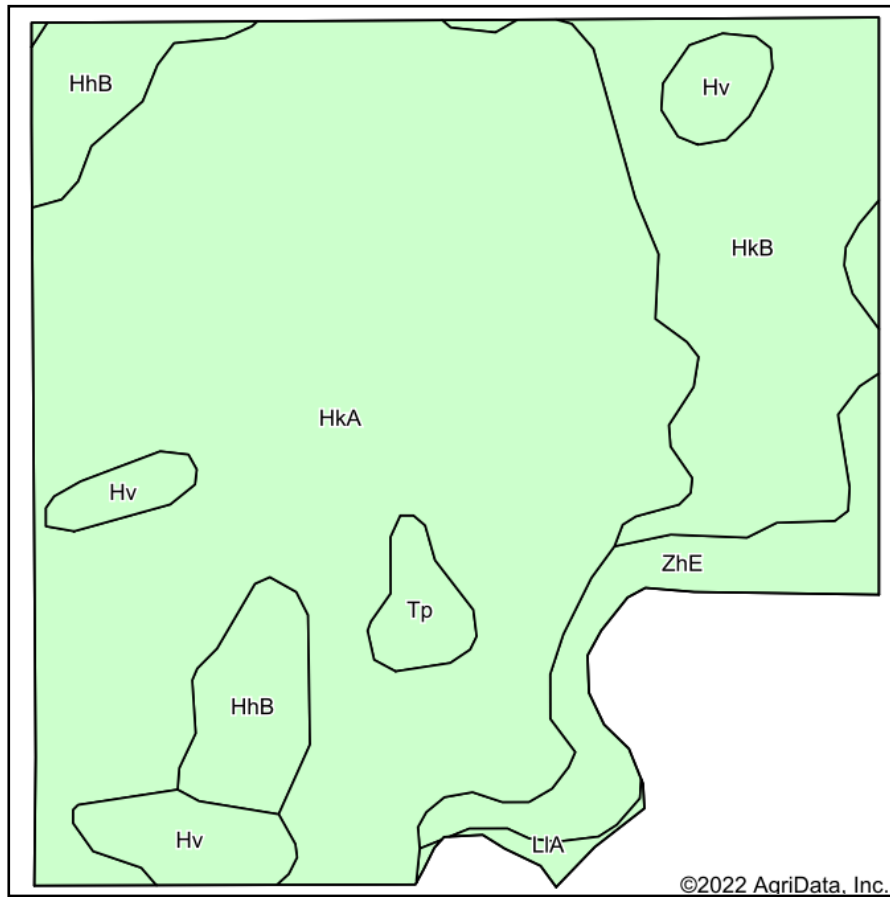


Soils Map



State: **South Dakota**
 County: **Hand**
 Location: **11-111N-68W**
 Township: **Logan**
 Acres: **135.61**
 Date: **6/2/2022**

ADVANTAGE
Land Co.

Maps Provided By:

 CUSTOMIZED ONLINE MAPPING
 © AgriData, Inc. 2021 www.AgriDataInc.com



Area Symbol: SD059, Soil Area Version: 23

Code	Soil Description	Acres	Percent of field	Non-Irr Class *c	Productivity Index
HkA	Houdek-Prosper loams, 0 to 2 percent slopes	87.26	64.3%	IIc	88
HkB	Houdek-Prosper loams, 1 to 6 percent slopes	21.40	15.8%	Ile	84
ZhE	Betts-Ethan loams, 15 to 40 percent slopes	8.87	6.5%	VIIe	18
HhB	Houdek loam, 2 to 6 percent slopes	8.54	6.3%	Ile	81
Hv	Hoven silt loam, 0 to 1 percent slopes	6.60	4.9%	VIIs	15
Tp	Tetonka silt loam, 0 to 1 percent slopes	2.18	1.6%	IVw	56
LIA	Bon loam, channeled, 0 to 2 percent slopes, frequently flooded	0.76	0.6%	VIW	34
Weighted Average				2.58	78

*c: Using Capabilities Class Dominant Condition Aggregation Method
 Soils data provided by USDA and NRCS.