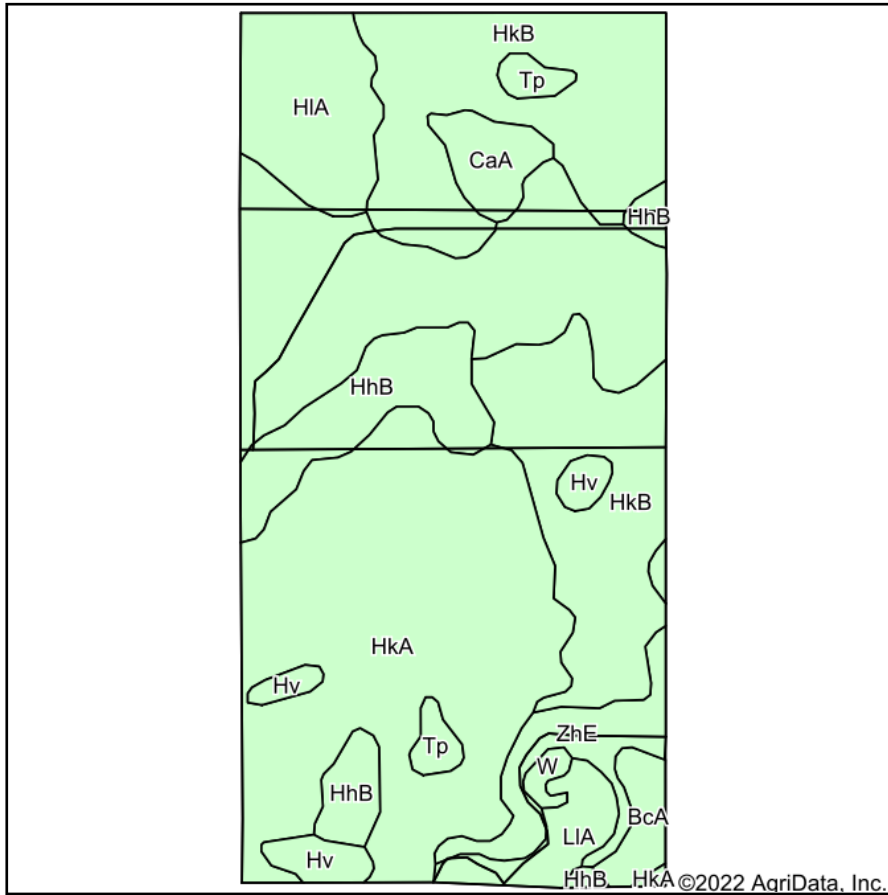
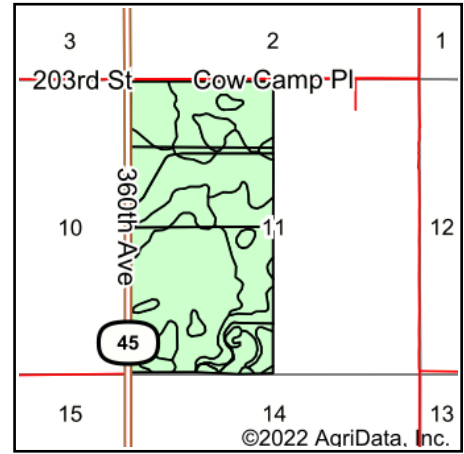


Soils Map



Soils data provided by USDA and NRCS.



State: **South Dakota**
 County: **Hand**
 Location: **11-111N-68W**
 Township: **Logan**
 Acres: **308.06**
 Date: **5/20/2022**

ADVANTAGE
Land Co.

Maps Provided By:

 CUSTOMIZED ONLINE MAPPING
 © AgriData, Inc. 2021 www.AgriDataInc.com

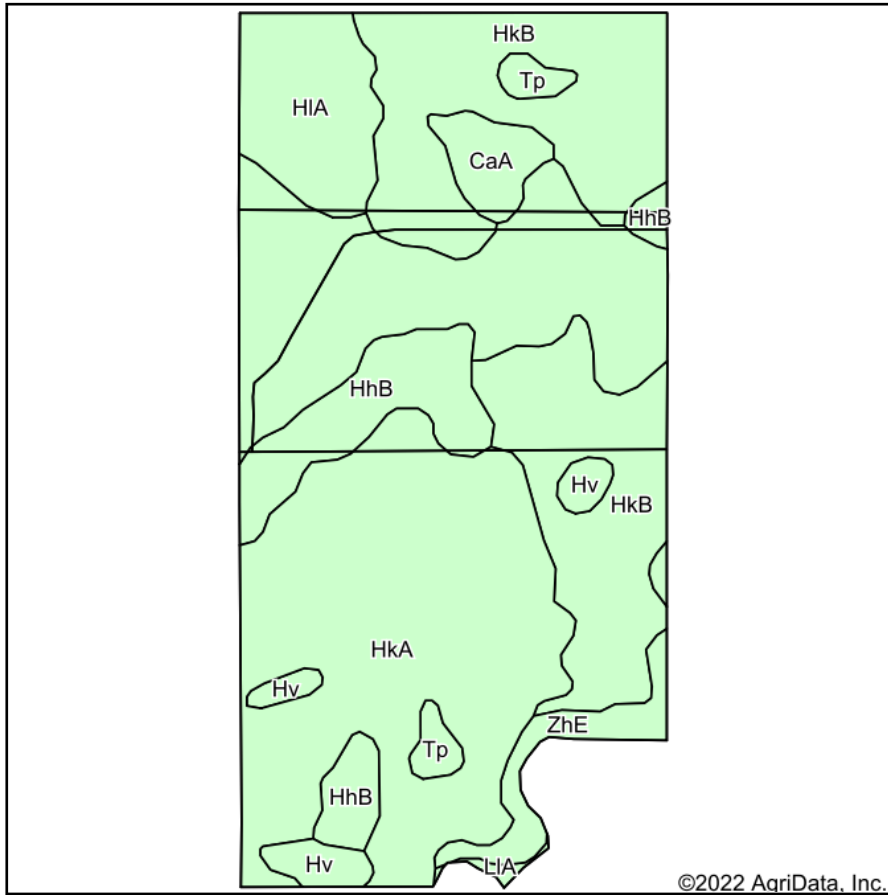


Area Symbol: SD059, Soil Area Version: 23

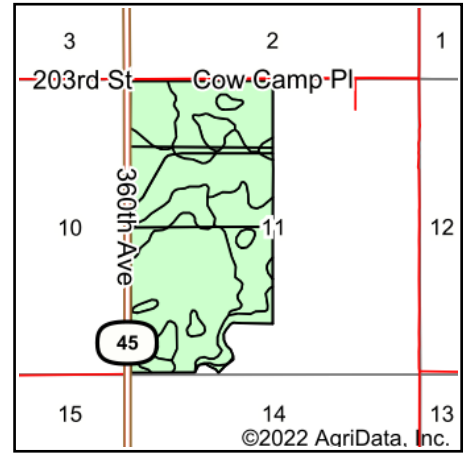
Code	Soil Description	Acres	Percent of field	Non-Irr Class *c	Productivity Index
HkA	Houdek-Prosper loams, 0 to 2 percent slopes	142.99	46.4%	IIc	88
HkB	Houdek-Prosper loams, 1 to 6 percent slopes	76.57	24.9%	Ile	84
HhB	Houdek loam, 2 to 6 percent slopes	24.11	7.8%	Ile	81
HIA	Houdek-Dudley complex, 0 to 2 percent slopes	19.92	6.5%	IIc	61
ZhE	Betts-Ethan loams, 15 to 40 percent slopes	12.60	4.1%	VIIe	18
LIA	Bon loam, channeled, 0 to 2 percent slopes, frequently flooded	7.85	2.5%	VIw	34
CaA	Dudley silt loam, nearly level	6.77	2.2%	IVs	37
Hv	Hoven silt loam, 0 to 1 percent slopes	6.60	2.1%	VIIs	15
BcA	Prosper-Stickney loams, nearly level	4.99	1.6%	IIc	84
Tp	Tetonka silt loam, 0 to 1 percent slopes	4.18	1.4%	IVw	56
W	Water	1.48	0.5%	VIII	0
Weighted Average				2.49	76.9

*c: Using Capabilities Class Dominant Condition Aggregation Method
 Soils data provided by USDA and NRCS.

Soils Map



Soils data provided by USDA and NRCS.



State: **South Dakota**
 County: **Hand**
 Location: **11-111N-68W**
 Township: **Logan**
 Acres: **289.89**
 Date: **5/27/2022**

ADVANTAGE
Land Co.

Maps Provided By:



Area Symbol: SD059, Soil Area Version: 23

Code	Soil Description	Acres	Percent of field	Non-Irr Class *c	Productivity Index
HkA	Houdek-Prosper loams, 0 to 2 percent slopes	142.65	49.2%	IIc	88
HkB	Houdek-Prosper loams, 1 to 6 percent slopes	76.57	26.4%	IIe	84
HhB	Houdek loam, 2 to 6 percent slopes	23.57	8.1%	IIe	81
HIA	Houdek-Dudley complex, 0 to 2 percent slopes	19.92	6.9%	IIc	61
ZhE	Betts-Ethan loams, 15 to 40 percent slopes	8.87	3.1%	VIIe	18
CaA	Dudley silt loam, nearly level	6.77	2.3%	IVs	37
Hv	Hoven silt loam, 0 to 1 percent slopes	6.60	2.3%	VIIs	15
Tp	Tetonka silt loam, 0 to 1 percent slopes	4.18	1.4%	IVw	56
LIA	Bon loam, channeled, 0 to 2 percent slopes, frequently flooded	0.76	0.3%	VIw	34
Weighted Average				2.33	78.9

*c: Using Capabilities Class Dominant Condition Aggregation Method
 Soils data provided by USDA and NRCS.