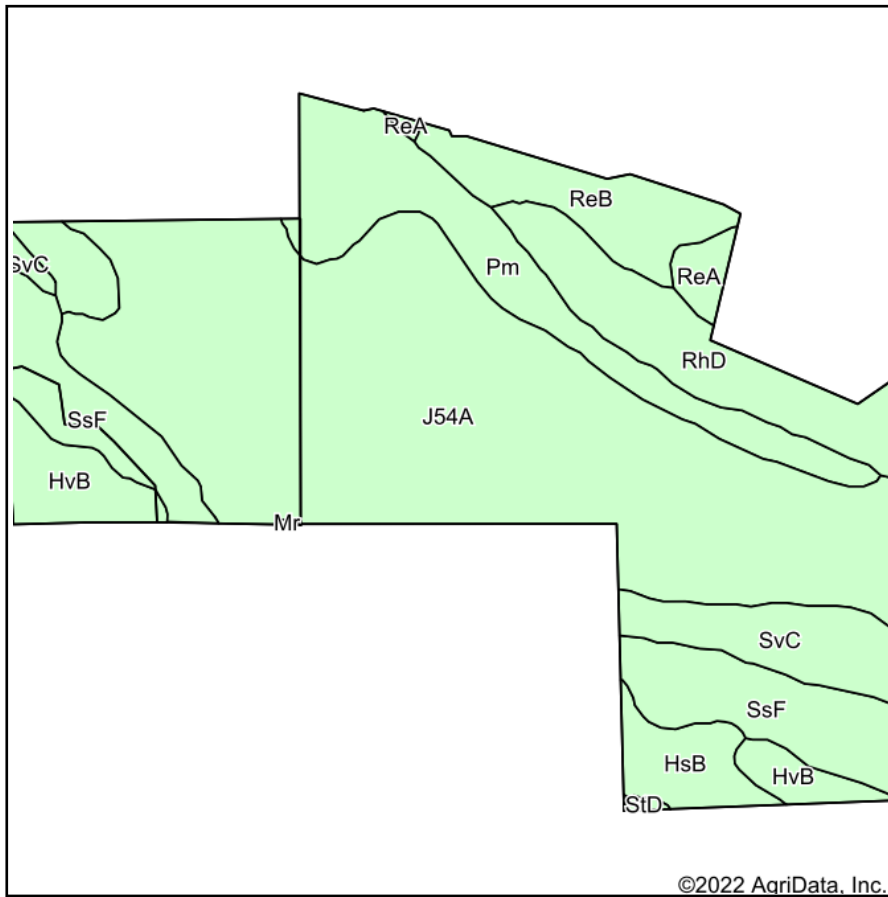
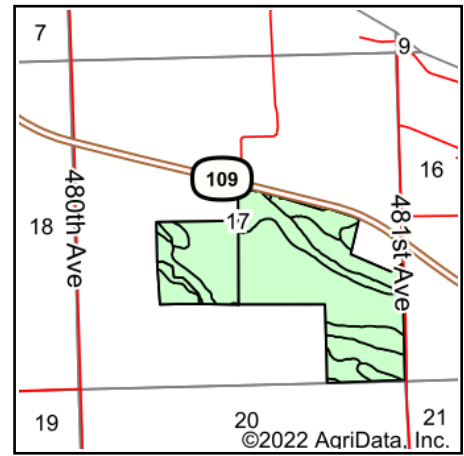


Soils Map



Soils data provided by USDA and NRCS.



State: **South Dakota**
 County: **Roberts**
 Location: **17-122N-47W**
 Township: **Lockwood**
 Acres: **157.38**
 Date: **4/28/2022**

ADVANTAGE
Land Co.

Maps Provided By:

 CUSTOMIZED ONLINE MAPPING
 © AgriData, Inc. 2021 www.AgriDataInc.com



Area Symbol: SD109, Soil Area Version: 22

Code	Soil Description	Acres	Percent of field	Non-Irr Class *c	Irr Class *c	Productivity Index
J54A	Marysland loam, occasionally ponded, 0 to 1 percent slopes	77.41	49.2%	IIIw		59
Pm	Playmoor silty clay loam	18.83	12.0%	IVw		35
SsF	Sisseton-Esmond complex, 12 to 40 percent slopes	17.78	11.3%	VIIe		23
RhD	Renshaw-Sioux loams, 9 to 21 percent slopes	12.53	8.0%	VIe		20
SvC	Svea loam, 5 to 9 percent slopes	8.56	5.4%	IIIe		86
ReB	Renshaw loam, 1 to 6 percent slopes	8.16	5.2%	IVs	IVs	39
HvB	Heimdal-Svea loams, 2 to 6 percent slopes	7.26	4.6%	Ile		83
HsB	Esmond-Heimdal-Sisseton complex, 2 to 6 percent slopes	4.73	3.0%	IIIe		81
ReA	Renshaw loam, 0 to 2 percent slopes	1.90	1.2%	IIIs	IIIs	43
StD	Sisseton-Esmond-Heimdal, complex, 6 to 20 percent slopes, moderately eroded	0.22	0.1%	IVe		43
Weighted Average				3.82	0.24	50.9

*c: Using Capabilities Class Dominant Condition Aggregation Method
 Soils data provided by USDA and NRCS.