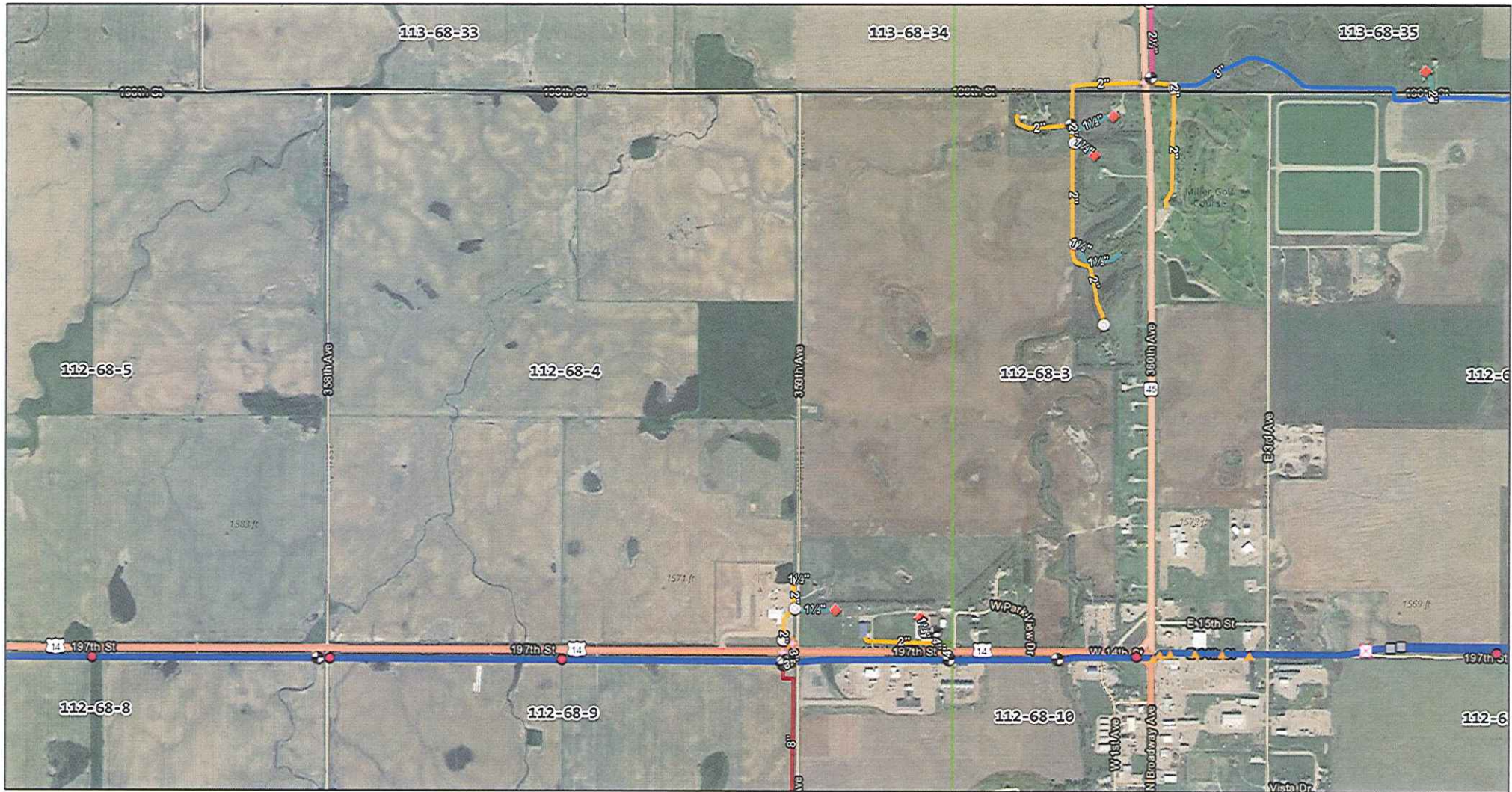




# ArcGIS Web Map



4/6/2022, 1:29:14 PM

World Transportation  
World Imagery  
Low Resolution 15m Imagery  
High Resolution 60cm Imagery  
High Resolution 30cm Imagery  
Citations  
4.8m Resolution Metadata

Water\_System Valves  
Ball  
Water\_Fittings  
Water\_Hydrants  
Yard  
Water\_ControlValves  
Pressure Reducing Station

Blow Off Valve  
Clean Out Valve  
Large Clean Out  
Combination Air Release  
Water\_SystemPoints  
Clean Out

Pipe Change  
Road Crossing  
EMS  
Rectifier  
Test Tap Box

Water\_Secondary Pipes  
1"  
1½"  
2"  
2½"  
3"  
4"  
8"

Water\_Mains  
Basemap - Sections - Labels  
Basemap - Townships  
Basemap - Plan\_Sheets

1:18,056  
0 0.15 0.3 0.6 mi  
0 0.25 0.5 1 km

Source: Esri, Maxar, GeoEye, Earthstar Geographics, CNES/Airbus DS, USDA, USGS, AeroGRID, IGN, and the GIS User Community, Esri, HERE, Garmin, (c) OpenStreetMap contributors, Sources: Esri, Airbus DS, USGS, NGA, NASA, CGIAR, N Robinson, NCEAS, NLS, OS, NMA, Geodatastyrelsen, Rijkswaterstaat, GSA, Geoland, FEMA,