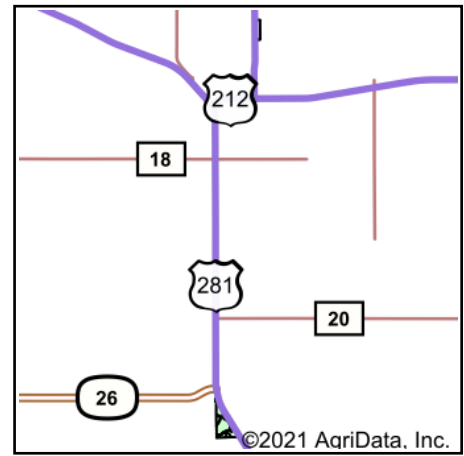
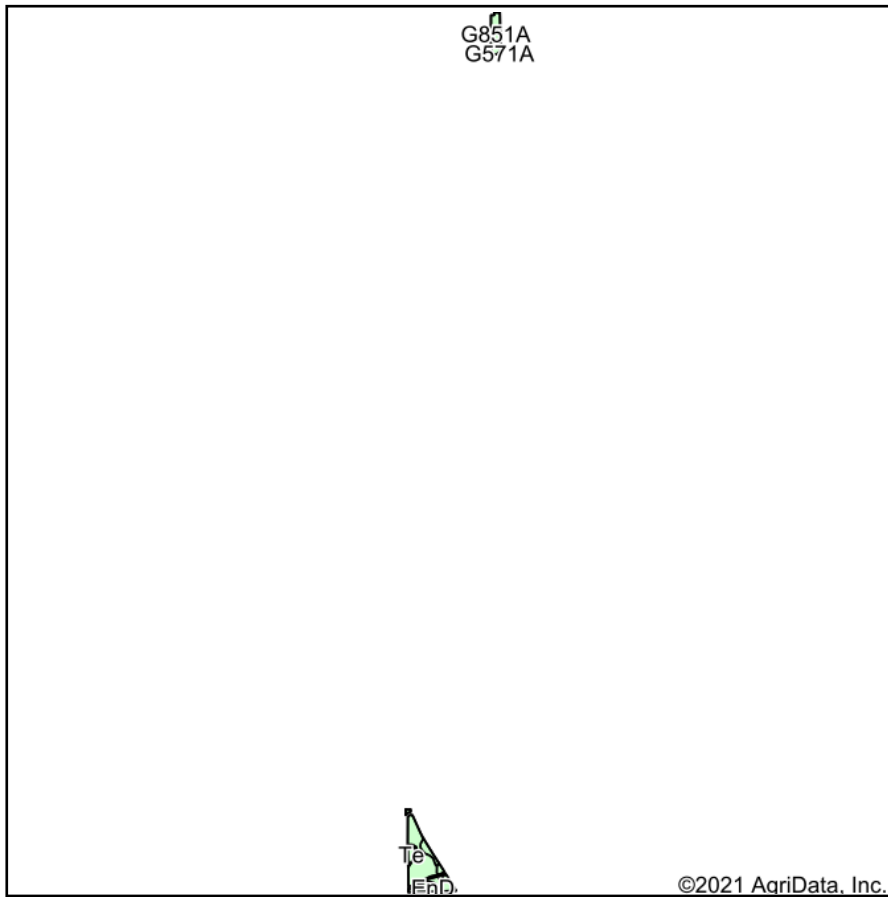


Soils Map



State: **South Dakota**
 County: **Spink**
 Location: **15-116N-64W**
 Township: **Redfield**
 Acres: **51.12**
 Date: **12/29/2021**

ADVANTAGE
Land Co.

Maps Provided By:

 CUSTOMIZED ONLINE MAPPING
 © AgriData, Inc. 2021 www.AgriDataInc.com

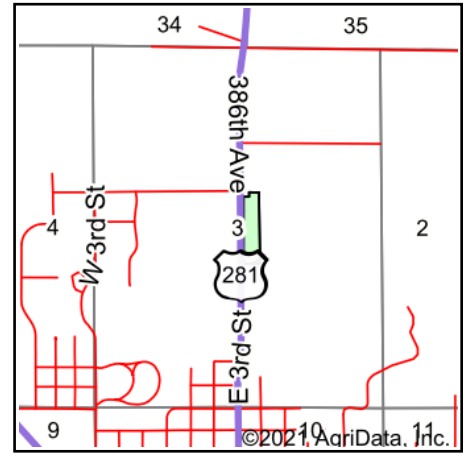
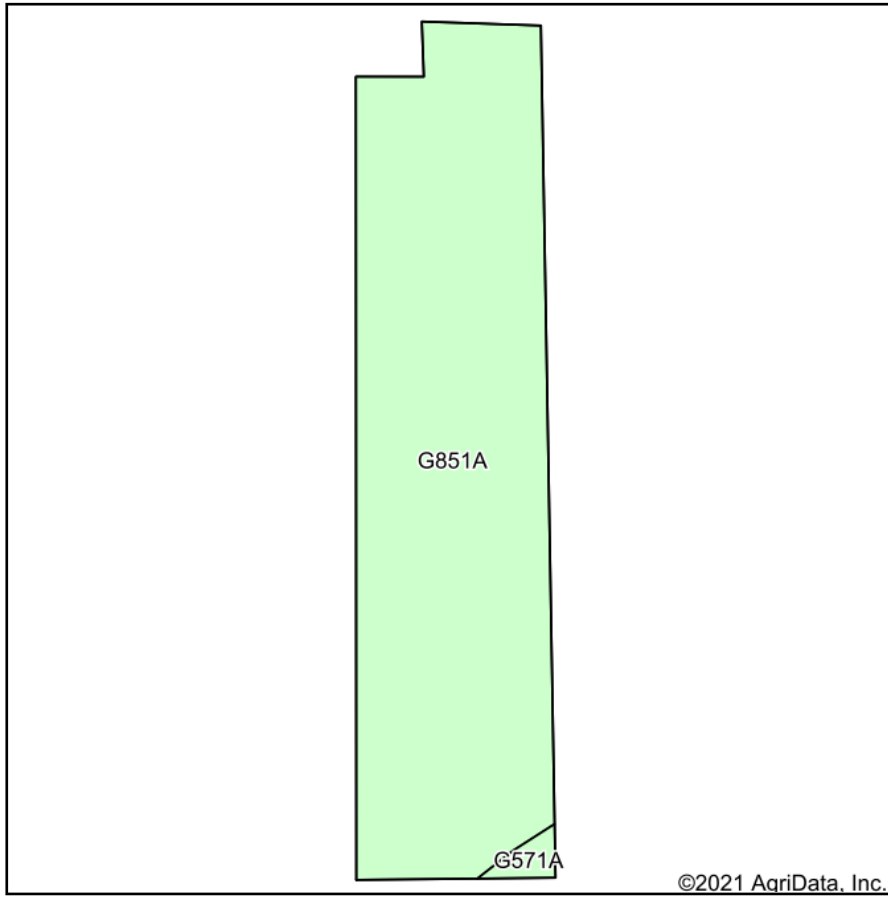


Area Symbol: SD115, Soil Area Version: 22

Code	Soil Description	Acres	Percent of field	Non-Irr Class *c	Productivity Index
HgB	Hand-Ethan-Bonilla loams, 1 to 6 percent slopes	30.55	59.8%	Ile	79
G851A	Nahon-Aberdeen-Exline silt loams, 0 to 2 percent slopes	8.47	16.6%	IVs	46
HcA	Hand-Bonilla loams, 0 to 3 percent slopes	3.25	6.4%	IIc	88
EmE	Betts-Ethan loams, 15 to 40 percent slopes	3.00	5.9%	VIIe	18
Te	Tetonka silt loam, 0 to 1 percent slopes	2.58	5.0%	IVw	56
EnD	Ethan-Hand loams, 9 to 20 percent slopes	1.64	3.2%	VIe	43
HfC	Hand-Ethan loams, 6 to 9 percent slopes	1.51	3.0%	IIIe	62
G571A	LaDelle silt loam, 0 to 2 percent slopes, occasionally flooded	0.12	0.2%	IIc	92
Weighted Average				2.88	67.7

*c: Using Capabilities Class Dominant Condition Aggregation Method
 Soils data provided by USDA and NRCS.

Soils Map



State: **South Dakota**
 County: **Spink**
 Location: **3-116N-64W**
 Township: **Redfield**
 Acres: **8.59**
 Date: **12/29/2021**

ADVANTAGE
Land Co.

Maps Provided By:

 CUSTOMIZED ONLINE MAPPING
 © AgriData, Inc. 2021 www.AgriDataInc.com

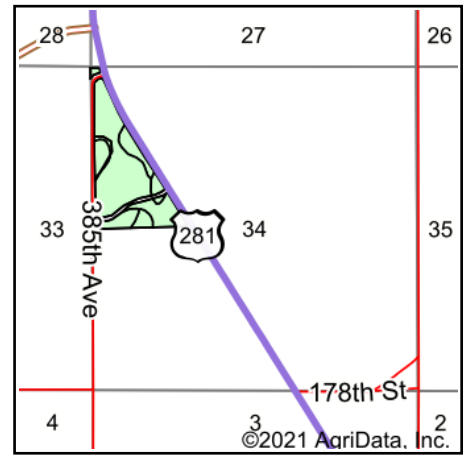
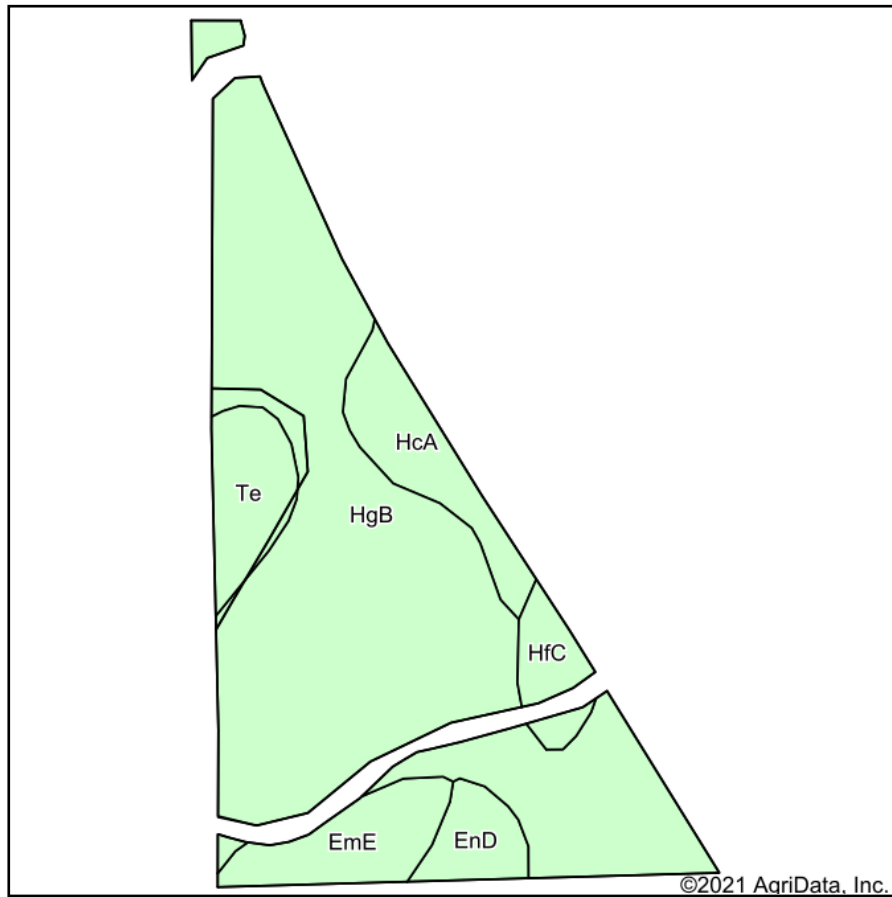


Area Symbol: SD115, Soil Area Version: 22

Code	Soil Description	Acres	Percent of field	Non-Irr Class *c	Productivity Index
G851A	Nahon-Aberdeen-Exline silt loams, 0 to 2 percent slopes	8.47	98.6%	IVs	46
G571A	LaDelle silt loam, 0 to 2 percent slopes, occasionally flooded	0.12	1.4%	IIc	92
Weighted Average				3.97	46.6

*c: Using Capabilities Class Dominant Condition Aggregation Method
 Soils data provided by USDA and NRCS.

Soils Map



State: **South Dakota**
 County: **Spink**
 Location: **34-116N-64W**
 Township: **Redfield**
 Acres: **42.53**
 Date: **12/29/2021**

ADVANTAGE
Land Co.

Maps Provided By:

 CUSTOMIZED ONLINE MAPPING
 © AgriData, Inc. 2021 www.AgriDataInc.com



Area Symbol: SD115, Soil Area Version: 22

Code	Soil Description	Acres	Percent of field	Non-Irr Class *c	Productivity Index
HgB	Hand-Ethan-Bonilla loams, 1 to 6 percent slopes	30.55	71.8%	Ile	79
HcA	Hand-Bonilla loams, 0 to 3 percent slopes	3.25	7.6%	Ilc	88
EmE	Betts-Ethan loams, 15 to 40 percent slopes	3.00	7.1%	Vlle	18
Te	Tetonka silt loam, 0 to 1 percent slopes	2.58	6.1%	IVw	56
EnD	Ethan-Hand loams, 9 to 20 percent slopes	1.64	3.9%	Vle	43
HfC	Hand-Ethan loams, 6 to 9 percent slopes	1.51	3.6%	IIle	62
Weighted Average				2.66	72

*c: Using Capabilities Class Dominant Condition Aggregation Method
 Soils data provided by USDA and NRCS.