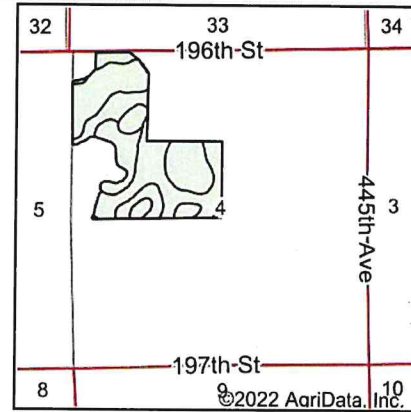
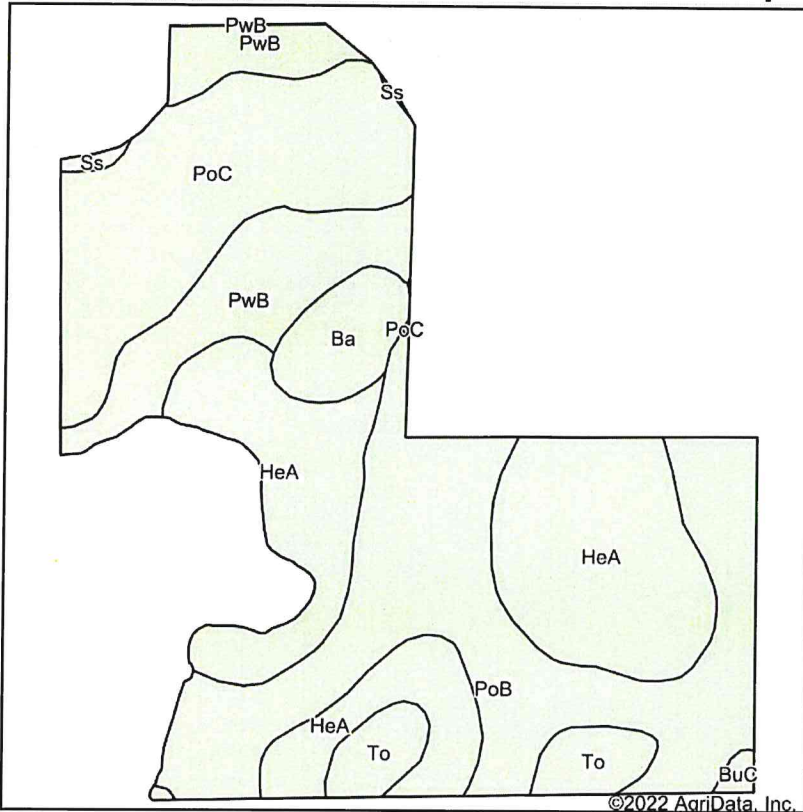


Soils Map



State: **South Dakota**
 County: **Kingsbury**
 Location: **4-112N-54W**
 Township: **Hartland**
 Acres: **106.28**
 Date: **1/26/2022**

ADVANTAGE

Land Co.

Maps Provided By:



surety
 CUSTOMIZED ONLINE MAPPING

© AgriData, Inc. 2021

www.AgriDataInc.com



Soils data provided by USDA and NRCS.

Area Symbol: SD057, Soil Area Version: 23

Area Symbol: SD077, Soil Area Version: 25

Code	Soil Description	Acres	Percent of field	Non-Irr Class *c	Productivity Index
HeA	Hetland silty clay loam, 0 to 2 percent slopes	32.29	30.4%	Is	89
PoB	Poinsett-Buse-Waubay complex, 1 to 6 percent slopes	31.36	29.5%	Ile	81
PoC	Poinsett-Buse-Waubay complex, 2 to 9 percent slopes	20.16	19.0%	IIle	69
PwB	Poinsett-Waubay silty clay loams, 1 to 6 percent slopes	12.73	12.0%	Ile	89
To	Tonka silty clay loam, 0 to 1 percent slopes	4.62	4.3%	IVw	58
Ba	Badger silty clay loam, 0 to 1 percent slopes	4.25	4.0%	IIw	80
BuC	Buse-Barnes loams, 6 to 9 percent slopes	0.50	0.5%	IVe	60
Ss	Southam silty clay loam, 0 to 1 percent slopes	0.37	0.3%	VIIIw	10
Weighted Average				2.00	80.7

*c: Using Capabilities Class Dominant Condition Aggregation Method

Soils data provided by USDA and NRCS.