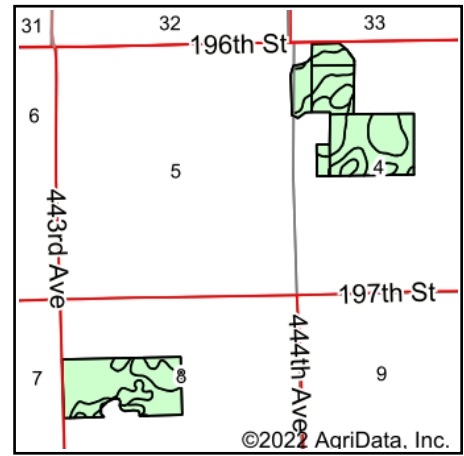
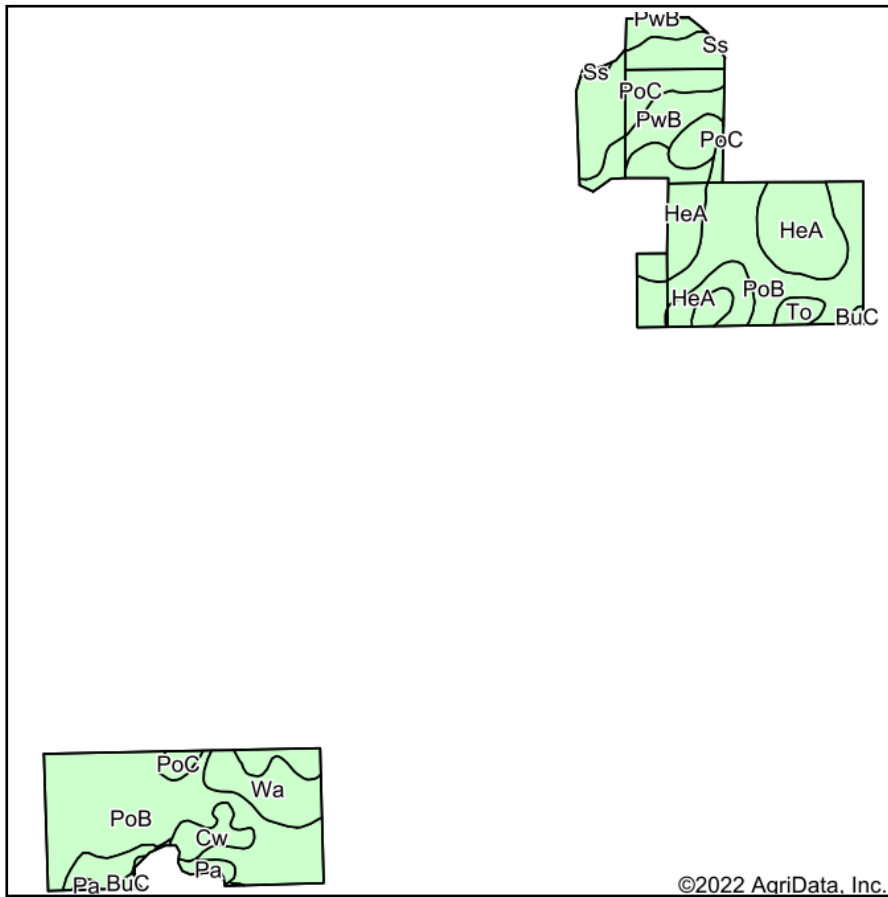


# Soils Map



State: **South Dakota**  
 County: **Kingsbury**  
 Location: **8-112N-54W**  
 Township: **Hartland**  
 Acres: **181.99**  
 Date: **1/14/2022**

**ADVANTAGE**  
*Land Co.*

Maps Provided By:  
  
 CUSTOMIZED ONLINE MAPPING  
 © AgriData, Inc. 2021 www.AgriDataInc.com

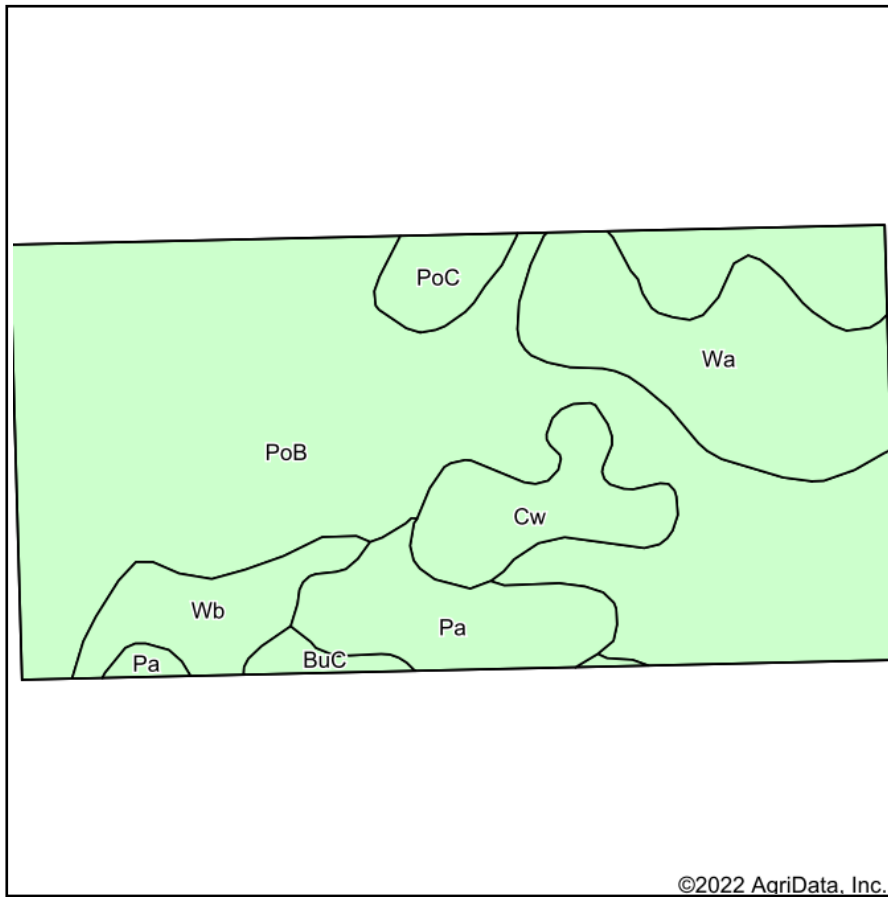


Area Symbol: SD057, Soil Area Version: 23  
 Area Symbol: SD077, Soil Area Version: 25

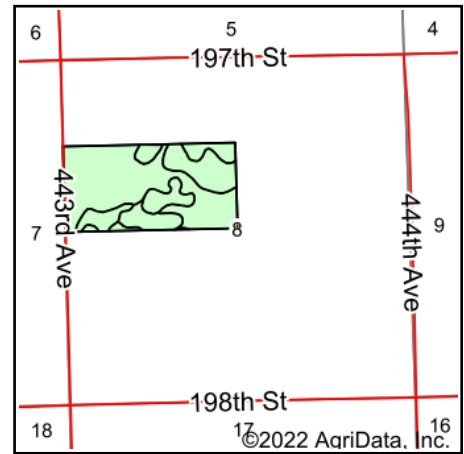
| Code                    | Soil Description   | Acres | Percent of field | Non-Irr Class *c | Productivity Index |
|-------------------------|--|-------|------------------|------------------|--------------------|
| PoB                     | Poinsett-Buse-Waubay complex, 1 to 6 percent slopes          | 79.99 | 44.0%            | Ile              | 81                 |
| HeA                     | Hetland silty clay loam, 0 to 2 percent slopes               | 32.95 | 18.1%            | Is               | 89                 |
| PoC                     | Poinsett-Buse-Waubay complex, 2 to 9 percent slopes          | 23.35 | 12.8%            | IIIe             | 69                 |
| PwB                     | Poinsett-Waubay silty clay loams, 1 to 6 percent slopes      | 12.93 | 7.1%             | Ile              | 89                 |
| Wa                      | Waubay silty clay loam, 0 to 2 percent slopes                | 10.98 | 6.0%             | Iw               | 98                 |
| Cw                      | Cubden-Tonka silty clay loams, coteau, 0 to 2 percent slopes | 4.87  | 2.7%             | IIIs             | 71                 |
| To                      | Tonka silty clay loam, 0 to 1 percent slopes                 | 4.62  | 2.5%             | IVw              | 58                 |
| Ba                      | Badger silty clay loam, 0 to 1 percent slopes                | 4.25  | 2.3%             | IIw              | 80                 |
| Wb                      | Waubay-Badger silty clay loams, 0 to 2 percent slopes        | 4.22  | 2.3%             | Iw               | 91                 |
| Pa                      | Parnell silty clay loam                                      | 2.35  | 1.3%             | Vw               | 34                 |
| BuC                     | Buse-Barnes loams, 6 to 9 percent slopes                     | 0.95  | 0.5%             | IVe              | 60                 |
| Ss                      | Southam silty clay loam, 0 to 1 percent slopes               | 0.53  | 0.3%             | VIIIw            | 10                 |
| <b>Weighted Average</b> |  |       |                  | <b>1.98</b>      | <b>80.9</b>        |

\*c: Using Capabilities Class Dominant Condition Aggregation Method  
 Soils data provided by USDA and NRCS.

# Soils Map



Soils data provided by USDA and NRCS.



State: **South Dakota**  
 County: **Kingsbury**  
 Location: **8-112N-54W**  
 Township: **Hartland**  
 Acres: **79.88**  
 Date: **1/14/2022**

**ADVANTAGE**  
*Land Co.*

Maps Provided By:  
  
 CUSTOMIZED ONLINE MAPPING  
 © AgriData, Inc. 2021 www.AgriDataInc.com

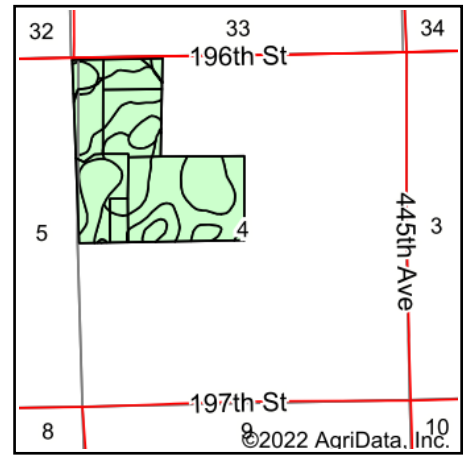
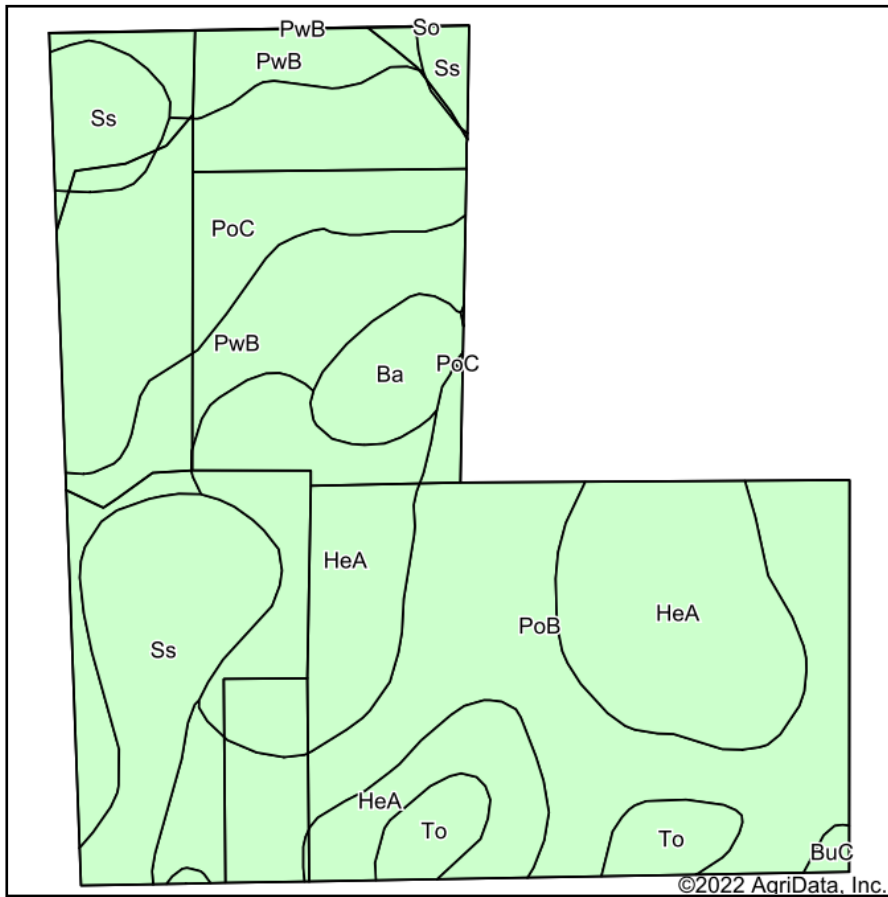


Area Symbol: SD077, Soil Area Version: 25

| Code                    | Soil Description   | Acres | Percent of field | Non-Irr Class *c | Productivity Index |
|-------------------------|--|-------|------------------|------------------|--------------------|
| PoB                     | Poinsett-Buse-Waubay complex, 1 to 6 percent slopes          | 50.36 | 63.0%            | Ile              | 81                 |
| Wa                      | Waubay silty clay loam, 0 to 2 percent slopes                | 11.03 | 13.8%            | Iw               | 98                 |
| Pa                      | Parnell silty clay loam                                      | 6.28  | 7.9%             | Vw               | 34                 |
| Cw                      | Cubden-Tonka silty clay loams, coteau, 0 to 2 percent slopes | 5.05  | 6.3%             | Ils              | 71                 |
| Wb                      | Waubay-Badger silty clay loams, 0 to 2 percent slopes        | 4.22  | 5.3%             | Iw               | 91                 |
| PoC                     | Poinsett-Buse-Waubay complex, 2 to 9 percent slopes          | 2.00  | 2.5%             | IIIe             | 69                 |
| BuC                     | Buse-Barnes loams, 6 to 9 percent slopes                     | 0.94  | 1.2%             | IVe              | 60                 |
| <b>Weighted Average</b> |  |       |                  | <b>2.09</b>      | <b>79</b>          |

\*c: Using Capabilities Class Dominant Condition Aggregation Method  
 Soils data provided by USDA and NRCS.

# Soils Map



State: **South Dakota**  
 County: **Kingsbury**  
 Location: **4-112N-54W**  
 Township: **Hartland**  
 Acres: **135.74**  
 Date: **1/14/2022**

**ADVANTAGE**  
*Land Co.*

Maps Provided By:  
  
 CUSTOMIZED ONLINE MAPPING  
 © AgriData, Inc. 2021 www.AgriDataInc.com



Area Symbol: SD057, Soil Area Version: 23  
 Area Symbol: SD077, Soil Area Version: 25

| Code                    | Soil Description  | Acres | Percent of field | Non-Irr Class *c | Productivity Index |
|-------------------------|---|-------|------------------|------------------|--------------------|
| HeA                     | Hetland silty clay loam, 0 to 2 percent slopes          | 36.74 | 27.1%            | Is               | 89                 |
| PoB                     | Poinsett-Buse-Waubay complex, 1 to 6 percent slopes     | 32.94 | 24.3%            | Ile              | 81                 |
| PoC                     | Poinsett-Buse-Waubay complex, 2 to 9 percent slopes     | 21.67 | 16.0%            | IIIe             | 69                 |
| PwB                     | Poinsett-Waubay silty clay loams, 1 to 6 percent slopes | 17.55 | 12.9%            | Ile              | 89                 |
| Ss                      | Southam silty clay loam, 0 to 1 percent slopes          | 17.36 | 12.8%            | VIIIw            | 10                 |
| To                      | Tonka silty clay loam, 0 to 1 percent slopes            | 4.62  | 3.4%             | IVw              | 58                 |
| Ba                      | Badger silty clay loam, 0 to 1 percent slopes           | 4.25  | 3.1%             | IIw              | 80                 |
| BuC                     | Buse-Barnes loams, 6 to 9 percent slopes                | 0.54  | 0.4%             | IVe              | 60                 |
| PwB                     | Poinsett-Waubay silty clay loams, 1 to 6 percent slopes | 0.07  | 0.1%             | Ile              | 89                 |
| <b>Weighted Average</b> |   |       |                  | <b>2.73</b>      | <b>72.3</b>        |

\*c: Using Capabilities Class Dominant Condition Aggregation Method  
 Soils data provided by USDA and NRCS.