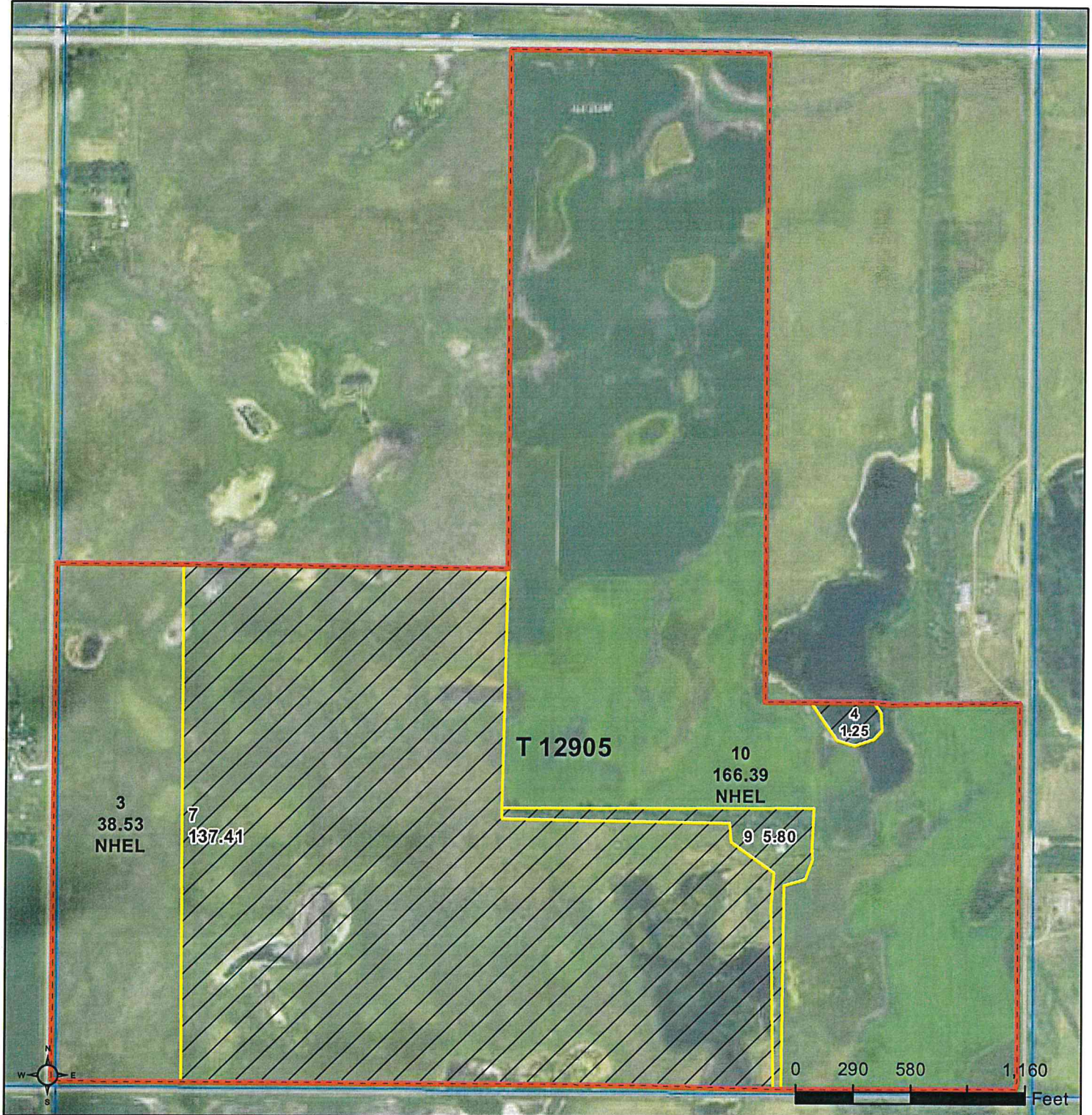




United States
Department of
Agriculture

Spink County, South Dakota



Common Land Unit

- Non-Cropland
- Cropland
- Tract Boundary
- PLSS

Wetland Determination Identifiers

- Restricted Use
- Limited Restrictions
- Exempt from Conservation Compliance Provisions

United States Department of Agriculture (USDA) Farm Service Agency (FSA) maps are for FSA Program administration only. This map does not represent a legal survey or reflect actual ownership; rather it depicts the information provided directly from the producer and/or National Agricultural Imagery Program (NAIP) imagery. The producer accepts the data 'as is' and assumes all risks associated with its use. USDA-FSA assumes no responsibility for actual or consequential damage incurred as a result of any user's reliance on this data outside FSA Programs. Wetland identifiers do not represent the size, shape, or specific determination of the area. Refer to your original determination (CPA-026 and attached maps) for exact boundaries and determinations or contact USDA Natural Resources Conservation Service (NRCS).

Unless Noted Otherwise:
ALL Beans are COM. ALL Corn is YEL
ALL crops NON-IRR; Intended use GR; Solid Planting Pattern
Grass: cropland-SMO BRO; NC=NAG

Shares: _____
Initial and Date: _____

2021 Program Year
Map Created June 22, 2021

Farm 9626

18 -116N -65W



United States
Department of
Agriculture

Spink County, South Dakota



Common Land Unit

- Non-Cropland
- Cropland

- Tract Boundary
- PLSS

Wetland Determination Identifiers

- Restricted Use
- Limited Restrictions
- Exempt from Conservation
- Compliance Provisions

Unless Noted Otherwise:

ALL Beans are COM. ALL Corn is YEL

ALL crops NON-IRR; Intended use GR; Solid Planting Pattern
Grass: cropland-SMO BRO; NC=NAG

Shares: _____

Initial and Date: _____

2021 Program Year

Map Created June 22, 2021

Farm 9626

8 -116N -64W

United States Department of Agriculture (USDA) Farm Service Agency (FSA) maps are for FSA Program administration only. This map does not represent a legal survey or reflect actual ownership; rather it depicts the information provided directly from the producer and/or National Agricultural Imagery Program (NAIP) imagery. The producer accepts the data 'as is' and assumes all risks associated with its use. USDA-FSA assumes no responsibility for actual or consequential damage incurred as a result of any user's reliance on this data outside FSA Programs. Wetland identifiers do not represent the size, shape, or specific determination of the area. Refer to your original determination (CPA-026 and attached maps) for exact boundaries and determinations or contact USDA Natural Resources Conservation Service (NRCS).

