






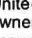
United States  
Department of  
Agriculture

Hand County, South Dakota



**Common Land Unit**  Tract Boundary  
 PLSS  
 Non-Cropland  
 Cropland

**Wetland Determination Identifiers**

-  Restricted Use
-  Limited Restrictions
-  Exempt from Conservation
-  Compliance Provisions

United States Department of Agriculture (USDA) Farm Service Agency (FSA) maps are for FSA Program administration only. This map does not represent a legal survey or reflect actual ownership; rather it depicts the information provided directly from the producer and/or National Agricultural Imagery Program (NAIP) imagery. The producer accepts the data 'as is' and assumes all risks associated with its use. USDA-FSA assumes no responsibility for actual or consequential damage incurred as a result of any user's reliance on this data outside FSA Programs. Wetland identifiers do not represent the size, shape, or specific determination of the area. Refer to your original determination (CPA-026 and attached maps) for exact boundaries and determinations or contact USDA Natural Resources Conservation Service (NRCS).

**Unless Noted Otherwise:**

**ALL Beans are COM. ALL Corn is YEL**

**ALL crops NON-IRR; Intended use GR; Solid Planting Pattern  
Grass: cropland-SMO BRO; NC=NAG**

**Shares:** \_\_\_\_\_

**Initial and Date:** \_\_\_\_\_

**2021 Program Year**

Map Created June 22, 2021

**Farm 9625**

**19 -116N -67W**





United States  
Department of  
Agriculture

Hand County, South Dakota



**Common Land Unit** Tract Boundary  
 Non-Cropland  
 Cropland  
 PLSS

**Wetland Determination Identifiers**  
 Restricted Use  
 Limited Restrictions  
 Exempt from Conservation  
 Compliance Provisions

**Unless Noted Otherwise:**  
**ALL Beans are COM. ALL Corn is YEL**  
**ALL crops NON-IRR; Intended use GR; Solid Planting Pattern**  
**Grass: cropland-SMO BRO; NC=NAG**

**Shares:** \_\_\_\_\_ **10 -116N -67W**  
**Initial and Date:** \_\_\_\_\_

**2021 Program Year**  
Map Created June 22, 2021

**Farm 9597**

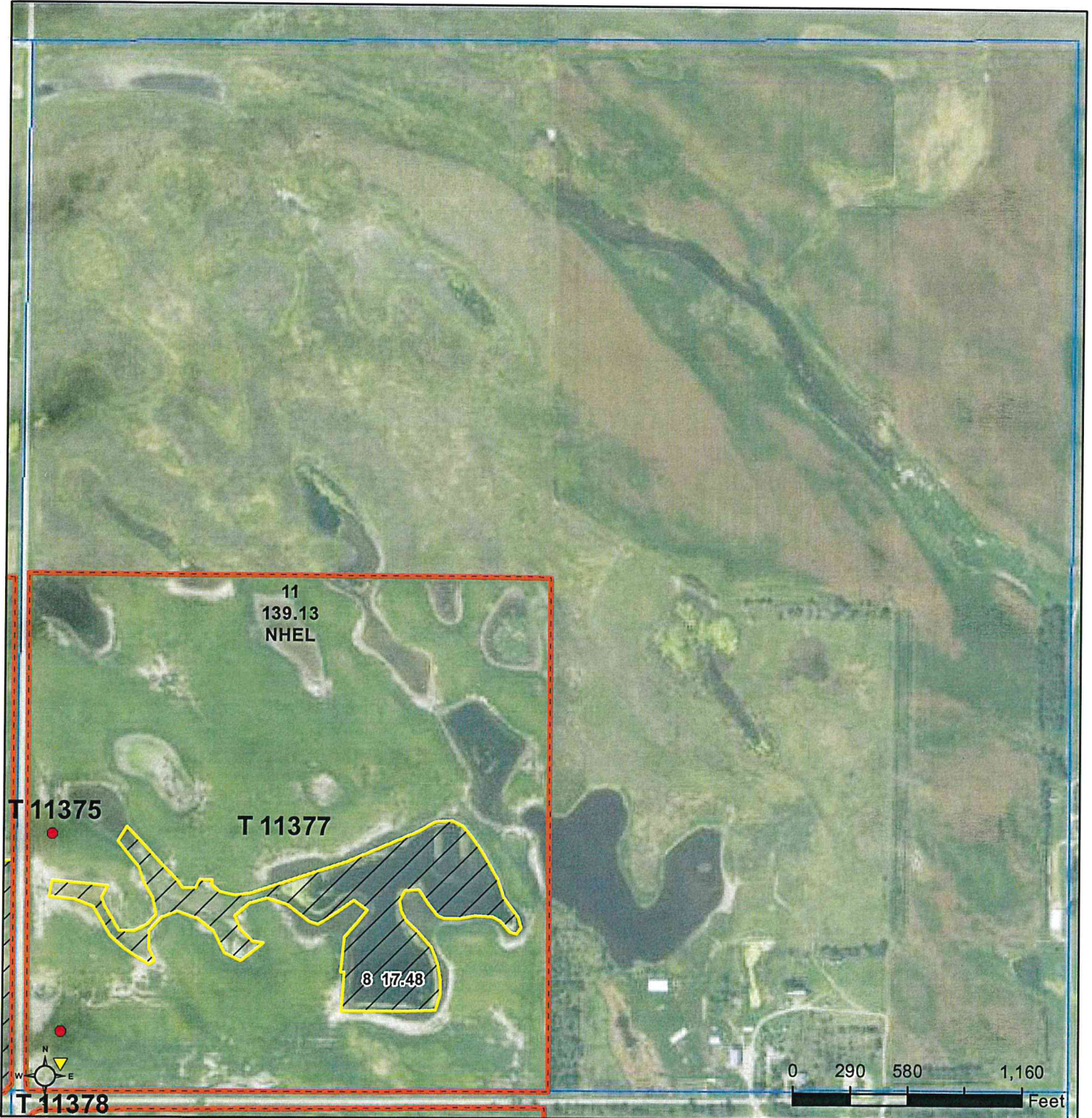
United States Department of Agriculture (USDA) Farm Service Agency (FSA) maps are for FSA Program administration only. This map does not represent a legal survey or reflect actual ownership; rather it depicts the information provided directly from the producer and/or National Agricultural Imagery Program (NAIP) imagery. The producer accepts the data 'as is' and assumes all risks associated with its use. USDA-FSA assumes no responsibility for actual or consequential damage incurred as a result of any user's reliance on this data outside FSA Programs. Wetland identifiers do not represent the size, shape, or specific determination of the area. Refer to your original determination (CPA-026 and attached maps) for exact boundaries and determinations or contact USDA Natural Resources Conservation Service (NRCS).





United States  
Department of  
Agriculture

Hand County, South Dakota



#### Common Land Unit

- Non-Cropland
- Cropland

- Tract Boundary
- PLSS

#### Wetland Determination Identifiers

- Restricted Use
- Limited Restrictions
- Exempt from Conservation Compliance Provisions

**Unless Noted Otherwise:**  
**ALL Beans are COM. ALL Corn is YEL**  
**ALL crops NON-IRR; Intended use GR; Solid Planting Pattern**  
**Grass: cropland-SMO BRO; NC=NAG**

**Shares:**

**Initial and Date:**

**2021 Program Year**

Map Created June 22, 2021

**Farm 9597**

**11 -116N -67W**

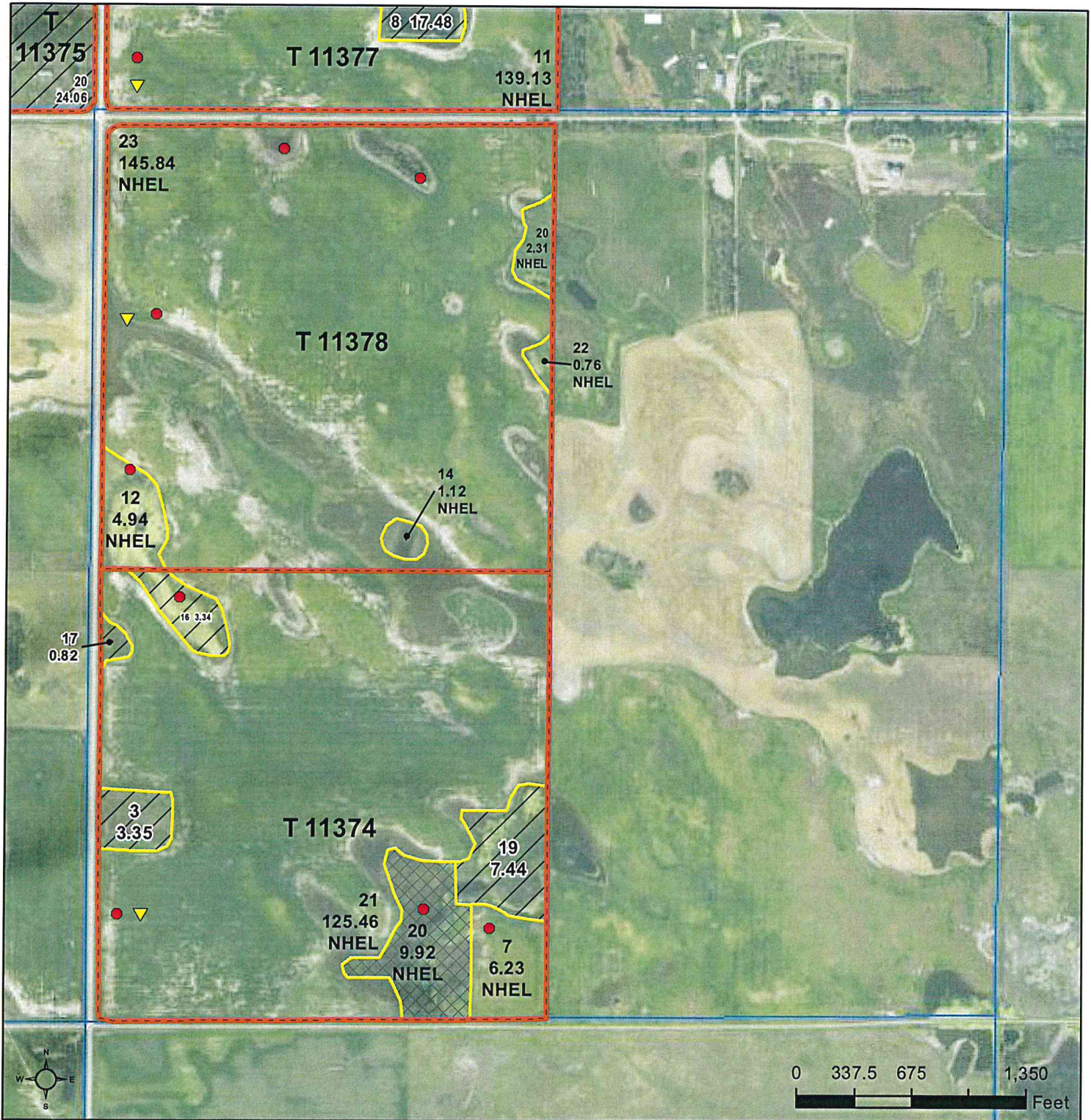
United States Department of Agriculture (USDA) Farm Service Agency (FSA) maps are for FSA Program administration only. This map does not represent a legal survey or reflect actual ownership; rather it depicts the information provided directly from the producer and/or National Agricultural Imagery Program (NAIP) imagery. The producer accepts the data 'as is' and assumes all risks associated with its use. USDA-FSA assumes no responsibility for actual or consequential damage incurred as a result of any user's reliance on this data outside FSA Programs. Wetland identifiers do not represent the size, shape, or specific determination of the area. Refer to your original determination (CPA-026 and attached maps) for exact boundaries and determinations or contact USDA Natural Resources Conservation Service (NRCS).





United States  
Department of  
Agriculture

Hand County, South Dakota



#### Common Land Unit

- Non-Cropland
- Cropland

- native\_sod\_SD115
- Tract Boundary
- PLSS

#### Wetland Determination Identifiers

- Restricted Use
- Limited Restrictions
- Exempt from Conservation
- Compliance Provisions

United States Department of Agriculture (USDA) Farm Service Agency (FSA) maps are for FSA Program administration only. This map does not represent a legal survey or reflect actual ownership; rather it depicts the information provided directly from the producer and/or National Agricultural Imagery Program (NAIP) imagery. The producer accepts the data 'as is' and assumes all risks associated with its use. USDA-FSA assumes no responsibility for actual or consequential damage incurred as a result of any user's reliance on this data outside FSA Programs. Wetland identifiers do not represent the size, shape, or specific determination of the area. Refer to your original determination (CPA-026 and attached maps) for exact boundaries and determinations or contact USDA Natural Resources Conservation Service (NRCS).

Unless Noted Otherwise:

ALL Beans are COM. ALL Corn is YEL

ALL crops NON-IRR; Intended use GR; Solid Planting Pattern  
Grass: cropland-SMO BRO; NC=NAG

Shares: \_\_\_\_\_

Initial and Date: \_\_\_\_\_

2021 Program Year

Map Created June 22, 2021

Farm 9597

14 -116N -67W





United States  
Department of  
Agriculture

Hand County, South Dakota



**Common Land Unit** Tract Boundary  
 Non-Cropland  
 Cropland  
 PLSS

**Wetland Determination Identifiers**

- Restricted Use
- Limited Restrictions
- Exempt from Conservation
- Compliance Provisions

United States Department of Agriculture (USDA) Farm Service Agency (FSA) maps are for FSA Program administration only. This map does not represent a legal survey or reflect actual ownership; rather it depicts the information provided directly from the producer and/or National Agricultural Imagery Program (NAIP) imagery. The producer accepts the data 'as is' and assumes all risks associated with its use. USDA-FSA assumes no responsibility for actual or consequential damage incurred as a result of any user's reliance on this data outside FSA Programs. Wetland identifiers do not represent the size, shape, or specific determination of the area. Refer to your original determination (CPA-026 and attached maps) for exact boundaries and determinations or contact USDA Natural Resources Conservation Service (NRCS).

**Unless Noted Otherwise:**

**ALL Beans are COM. ALL Corn is YEL**

**ALL crops NON-IRR; Intended use GR; Solid Planting Pattern**  
**Grass: cropland-SMO BRO; NC=NAG**

**Shares:**

**Initial and Date:**

**2021 Program Year**

Map Created June 22, 2021

**Farm 9626**

**15 -116N -66W**