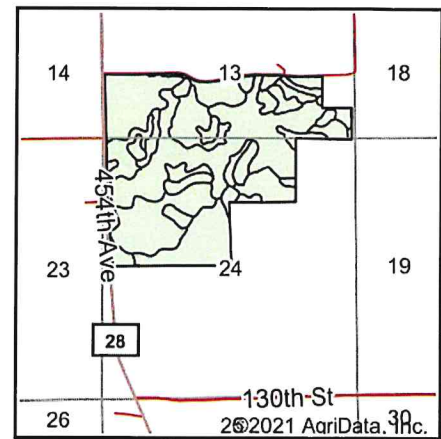
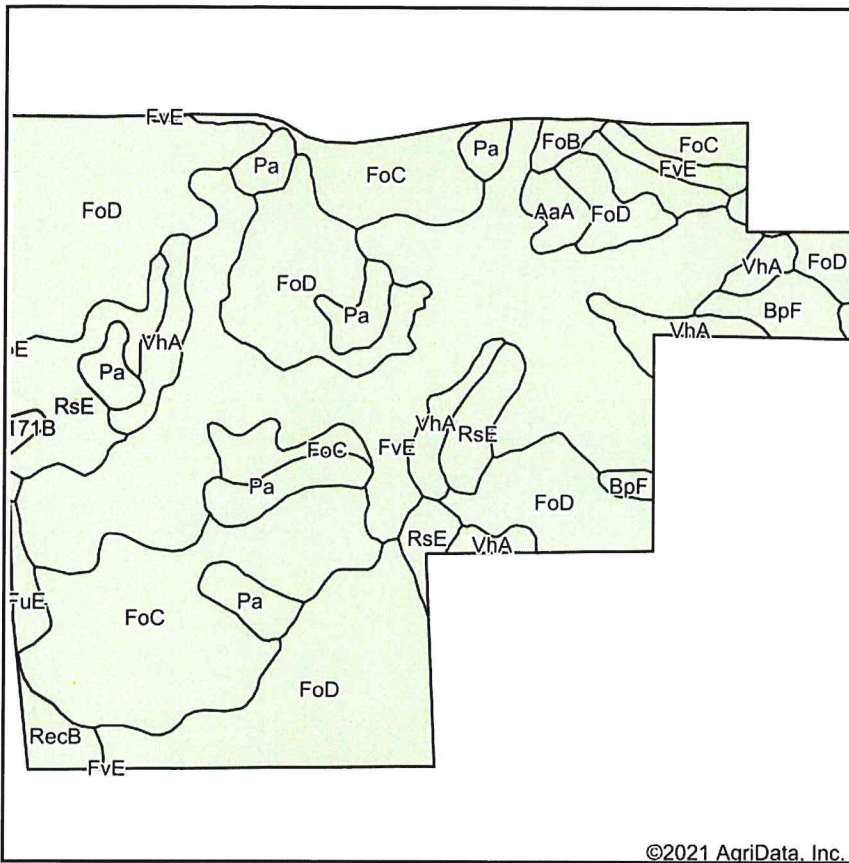


Soils Map



State: **South Dakota**
 County: **Roberts**
 Location: **13-124N-52W**
 Township: **One Road**
 Acres: **332.77**
 Date: **12/15/2021**

ADVANTAGE
Land Co.

Maps Provided By:

 CUSTOMIZED ONLINE MAPPING
 © AgriData, Inc. 2021 www.AgriDataInc.com



Soils data provided by USDA and NRCS.

©2021 AgriData, Inc.

Area Symbol: SD109, Soil Area Version: 22

Code	Soil Description	Acres	Percent of field	Non-Irr Class *c	Productivity Index
FoD	Forman-Aastad loams, 9 to 15 percent slopes	103.40	31.1%	IVe	56
FvE	Forman-Buse stony complex, 9 to 40 percent slopes	92.77	27.9%	Vlls	25
FoC	Forman-Aastad loams, 6 to 9 percent slopes	59.79	18.0%	Ille	69
RsE	Sioux-Renshaw complex, 15 to 40 percent slopes, very stony	19.81	6.0%	Vlls	5
Pa	Parnell silty clay loam	18.23	5.5%	Vw	31
VhA	Vallers-Hamerly loams, 0 to 2 percent slopes	16.08	4.8%	IVw	57
BpF	Buse-Forman loams, 20 to 40 percent slopes	6.24	1.9%	Vlle	20
RecB	Renshaw loam, 3 to 9 percent slopes	3.82	1.1%	IVe	39
Tk	Tonka silty clay loam, 0 to 1 percent slopes	3.66	1.1%	IVw	58
AaA	Aastad loam, 0 to 2 percent slopes	3.28	1.0%	Is	93
FuE	Forman-Buse loams, 15 to 25 percent slopes	2.64	0.8%	Vle	29
FoB	Forman-Aastad loams, 2 to 6 percent slopes	1.95	0.6%	Ile	82
Z171B	Renshaw-Fordville loams, coteau, 2 to 6 percent slopes	1.10	0.3%	IVs	43
Weighted Average				4.92	44.7

*c: Using Capabilities Class Dominant Condition Aggregation Method
 Soils data provided by USDA and NRCS.