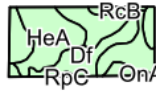
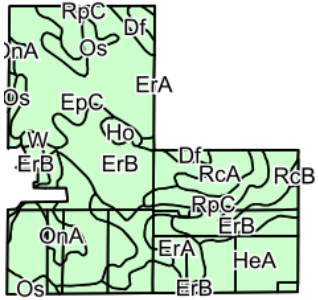
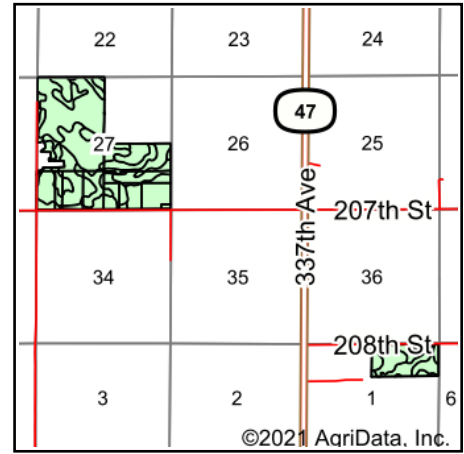


# Soils Map



©2021 AgriData, Inc.

Soils data provided by USDA and NRCS.



State: **South Dakota**

County: **Hyde**

Location: **35-111N-72W**

Township: **Central Hyde**

Acres: **535.99**

Date: **12/2/2021**

**ADVANTAGE**  
*Land Co.*

Maps Provided By:



© AgriData, Inc. 2021

www.AgriDataInc.com

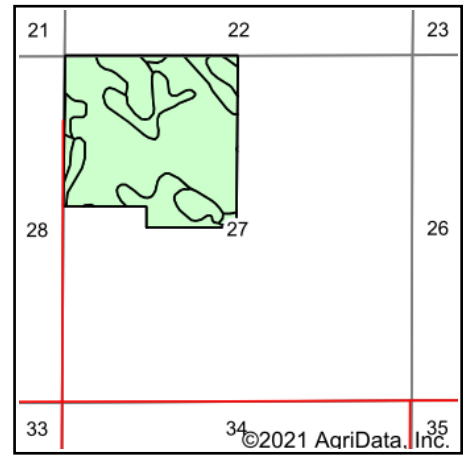
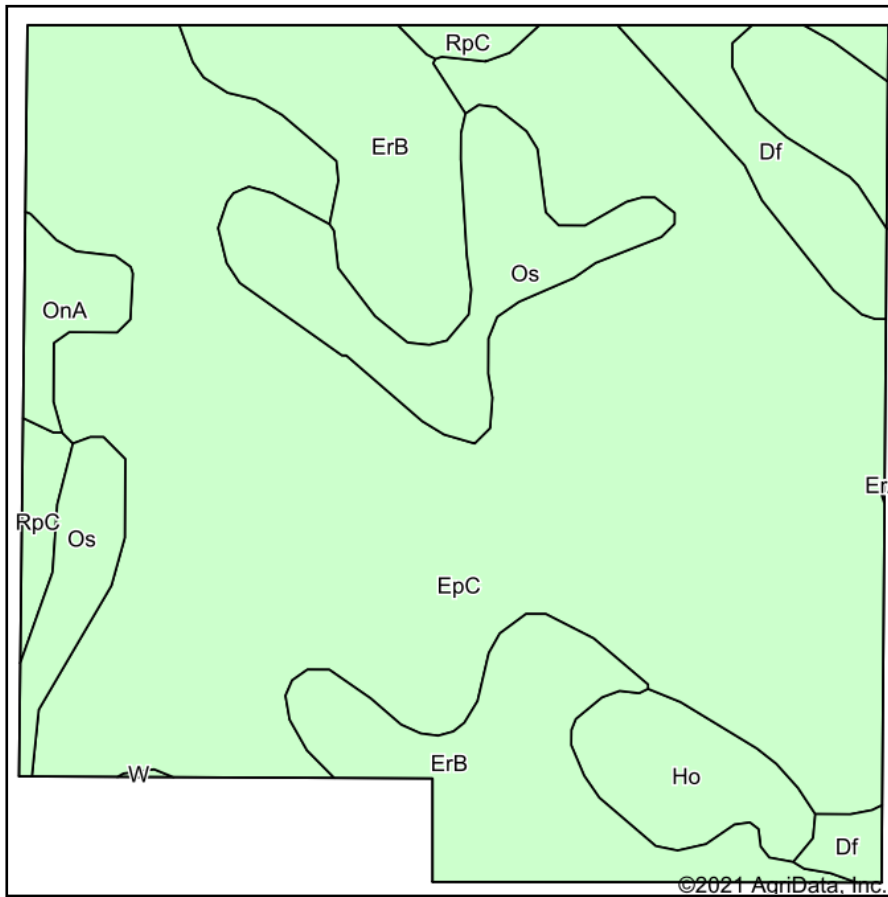


Area Symbol: SD069, Soil Area Version: 25

Code	Soil Description	Acres	Percent of field	Non-Irr Class *c	Productivity Index
ErB	Eakin-Raber complex, 2 to 6 percent slopes	111.66	20.8%	Ile	76
EpC	Eakin-Peno complex, 6 to 9 percent slopes	99.48	18.6%	IIle	64
HeA	Highmore silt loam, 0 to 2 percent slopes	66.84	12.5%	IIc	92
HeB	Highmore silt loam, 2 to 6 percent slopes	59.98	11.2%	Ile	91
Df	DeGrey-Walke silt loams, 0 to 2 percent slopes	44.18	8.2%	IVs	56
OnA	Mobridge silt loam, 0 to 2 percent slopes	40.73	7.6%	IIc	94
RpC	Raber-Peno loams, 6 to 9 percent slopes	31.11	5.8%	IIIle	52
Os	Onita-Hoven silt loams	21.53	4.0%	IIc	59
ErA	Eakin-Raber complex, 0 to 2 percent slopes	16.63	3.1%	IIc	83
RcA	Raber-Cavo loams, 0 to 2 percent slopes	15.78	2.9%	IIc	60
HdA	Highmore-DeGrey silt loams, 0 to 2 percent slopes	15.04	2.8%	IIc	76
Ho	Hoven silt loam, 0 to 1 percent slopes	5.50	1.0%	VIIs	15
RcB	Raber-Cavo loams, 2 to 6 percent slopes	4.24	0.8%	Ile	57
W	Water	3.29	0.6%	VIII	0
<b>Weighted Average</b>				<b>2.49</b>	<b>73.6</b>

\*c: Using Capabilities Class Dominant Condition Aggregation Method  
Soils data provided by USDA and NRCS.

# Soils Map



State: **South Dakota**  
 County: **Hyde**  
 Location: **27-111N-72W**  
 Township: **Central Hyde**  
 Acres: **148.9**  
 Date: **12/2/2021**

**ADVANTAGE**  
*Land Co.*

Maps Provided By:  
  
 CUSTOMIZED ONLINE MAPPING  
 © AgriData, Inc. 2021 www.AgriDataInc.com

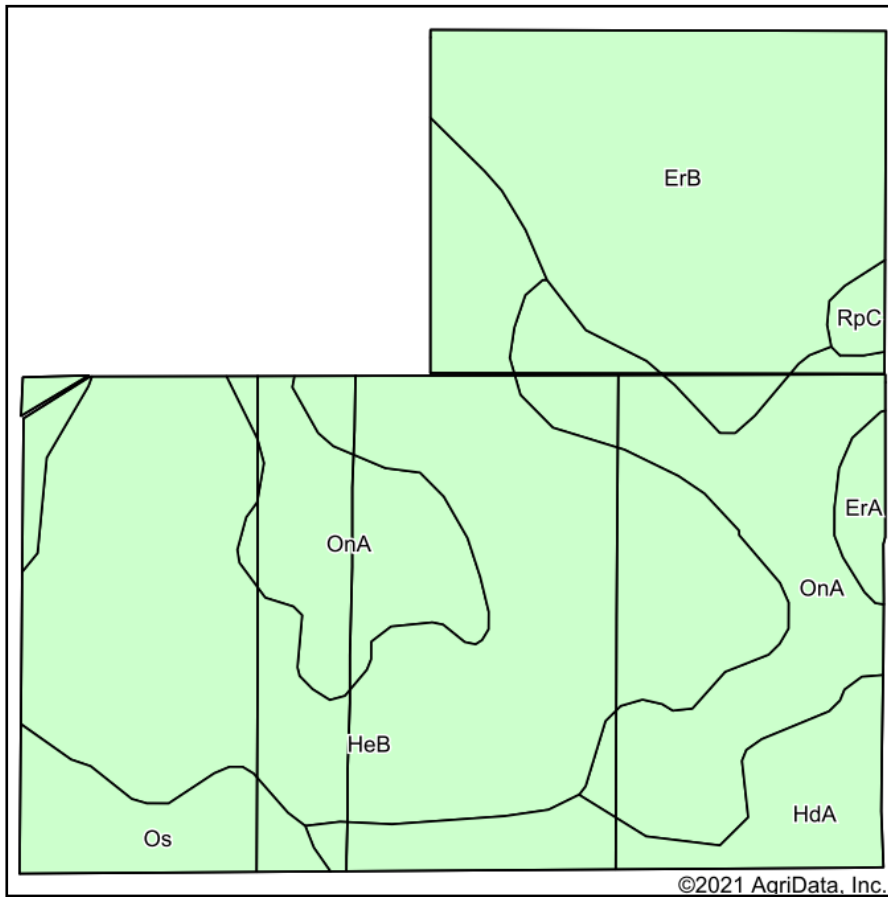


Area Symbol: SD069, Soil Area Version: 25

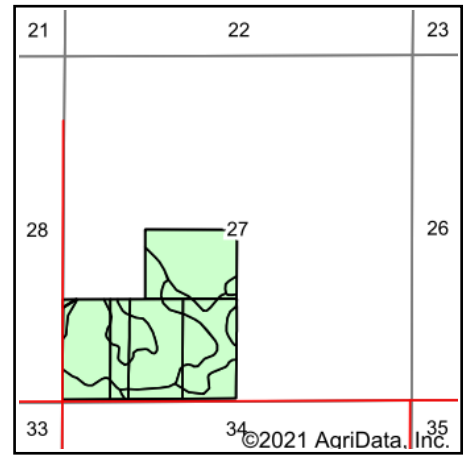
Code	Soil Description	Acres	Percent of field	Non-Irr Class *c	Productivity Index
EpC	Eakin-Peno complex, 6 to 9 percent slopes	96.11	64.5%	IIIe	64
ErB	Eakin-Raber complex, 2 to 6 percent slopes	22.56	15.2%	Ile	76
Os	Onita-Hoven silt loams	13.29	8.9%	IIc	59
Df	DeGrey-Walke silt loams, 0 to 2 percent slopes	6.49	4.4%	IVs	56
Ho	Hoven silt loam, 0 to 1 percent slopes	5.50	3.7%	VIIs	15
OnA	Mobridge silt loam, 0 to 2 percent slopes	2.63	1.8%	IIc	94
RpC	Raber-Peno loams, 6 to 9 percent slopes	2.26	1.5%	IIIe	52
W	Water	0.06	0.0%	VIII	0
<b>Weighted Average</b>				<b>2.90</b>	<b>63.5</b>

\*c: Using Capabilities Class Dominant Condition Aggregation Method  
 Soils data provided by USDA and NRCS.

# Soils Map



Soils data provided by USDA and NRCS.



State: **South Dakota**  
 County: **Hyde**  
 Location: **27-111N-72W**  
 Township: **Central Hyde**  
 Acres: **126.08**  
 Date: **12/2/2021**

**ADVANTAGE**  
*Land Co.*

Maps Provided By:  
  
 CUSTOMIZED ONLINE MAPPING  
 © AgriData, Inc. 2021 www.AgriDataInc.com

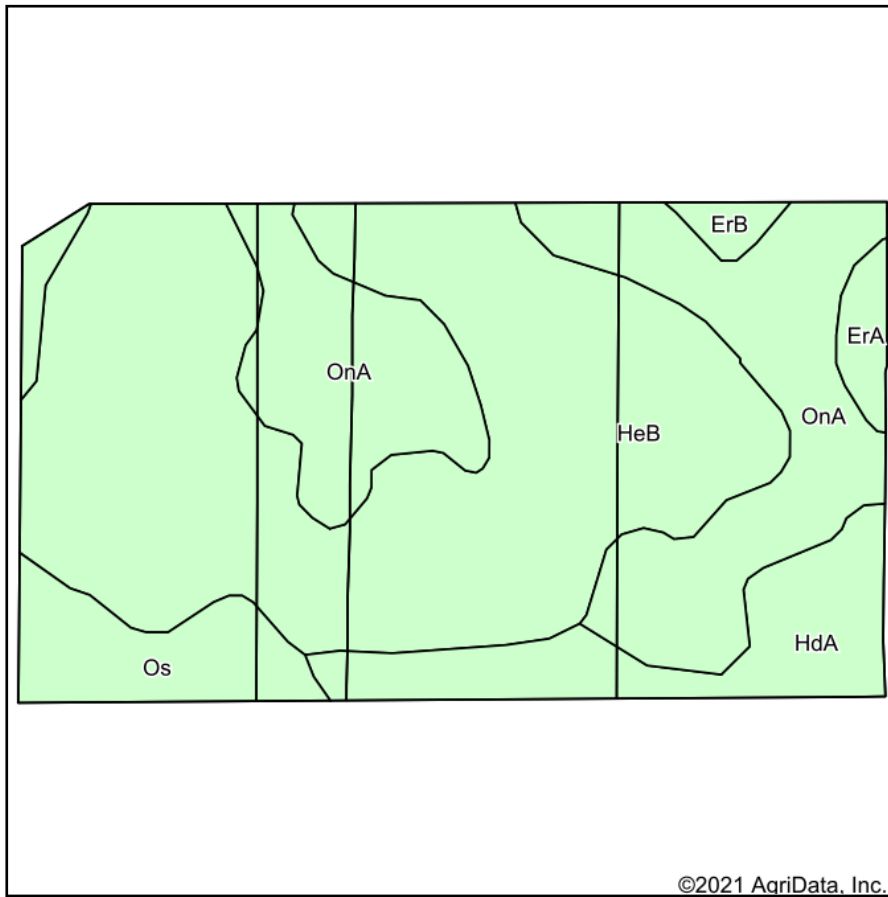


Area Symbol: SD069, Soil Area Version: 25

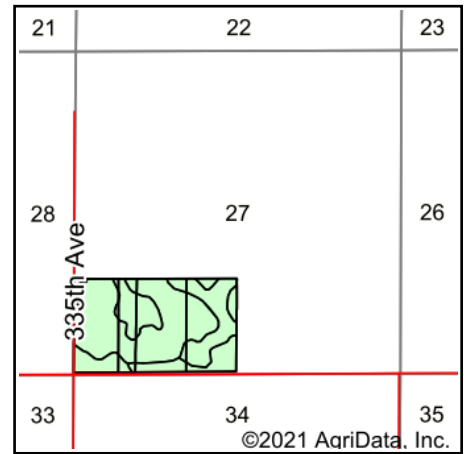
Code	Soil Description	Acres	Percent of field	Non-Irr Class *c	Productivity Index
HeB	Highmore silt loam, 2 to 6 percent slopes	52.88	41.9%	Ile	91
ErB	Eakin-Raber complex, 2 to 6 percent slopes	27.63	21.9%	Ile	76
OnA	Mobridge silt loam, 0 to 2 percent slopes	26.95	21.4%	Ilc	94
HdA	Highmore-DeGrey silt loams, 0 to 2 percent slopes	9.05	7.2%	Ilc	76
Os	Onita-Hoven silt loams	7.10	5.6%	Ilc	59
ErA	Eakin-Raber complex, 0 to 2 percent slopes	1.56	1.2%	Ilc	83
RpC	Raber-Peno loams, 6 to 9 percent slopes	0.91	0.7%	IIle	52
<b>Weighted Average</b>				<b>2.01</b>	<b>85.1</b>

\*c: Using Capabilities Class Dominant Condition Aggregation Method  
 Soils data provided by USDA and NRCS.

# Soils Map



Soils data provided by USDA and NRCS.



State: **South Dakota**  
 County: **Hyde**  
 Location: **27-111N-72W**  
 Township: **Central Hyde**  
 Acres: **92.03**  
 Date: **12/2/2021**

**ADVANTAGE**  
*Land Co.*

Maps Provided By:

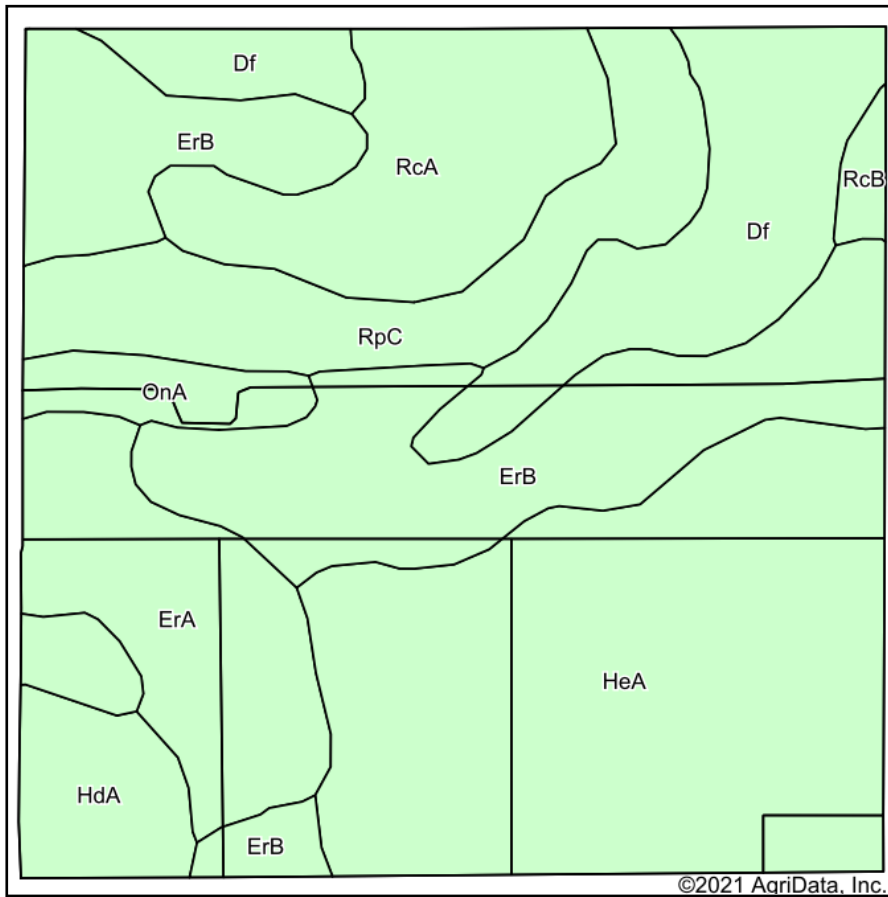


Area Symbol: SD069, Soil Area Version: 25

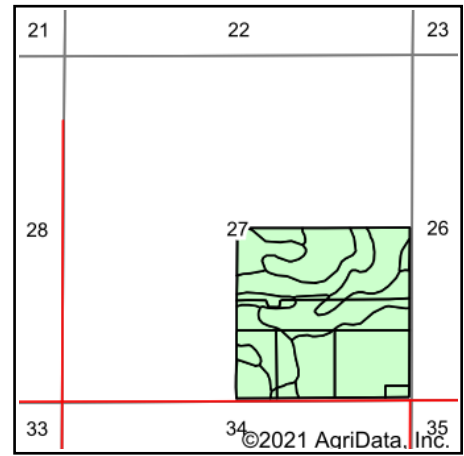
Code	Soil Description	Acres	Percent of field	Non-Irr Class *c	Productivity Index
HeB	Highmore silt loam, 2 to 6 percent slopes	48.66	52.9%	Ile	91
OnA	Mobridge silt loam, 0 to 2 percent slopes	25.03	27.2%	Ilc	94
HdA	Highmore-DeGrey silt loams, 0 to 2 percent slopes	9.05	9.8%	Ilc	76
Os	Onita-Hoven silt loams	6.83	7.4%	Ilc	59
ErA	Eakin-Raber complex, 0 to 2 percent slopes	1.56	1.7%	Ilc	83
ErB	Eakin-Raber complex, 2 to 6 percent slopes	0.90	1.0%	Ile	76
<b>Weighted Average</b>				<b>2.00</b>	<b>87.7</b>

\*c: Using Capabilities Class Dominant Condition Aggregation Method  
 Soils data provided by USDA and NRCS.

# Soils Map



Soils data provided by USDA and NRCS.



State: **South Dakota**  
 County: **Hyde**  
 Location: **36-111N-72W**  
 Township: **Central Hyde**  
 Acres: **156.29**  
 Date: **12/2/2021**

**ADVANTAGE**  
*Land Co.*

Maps Provided By:  
  
 CUSTOMIZED ONLINE MAPPING  
 © AgriData, Inc. 2021 www.AgriDataInc.com

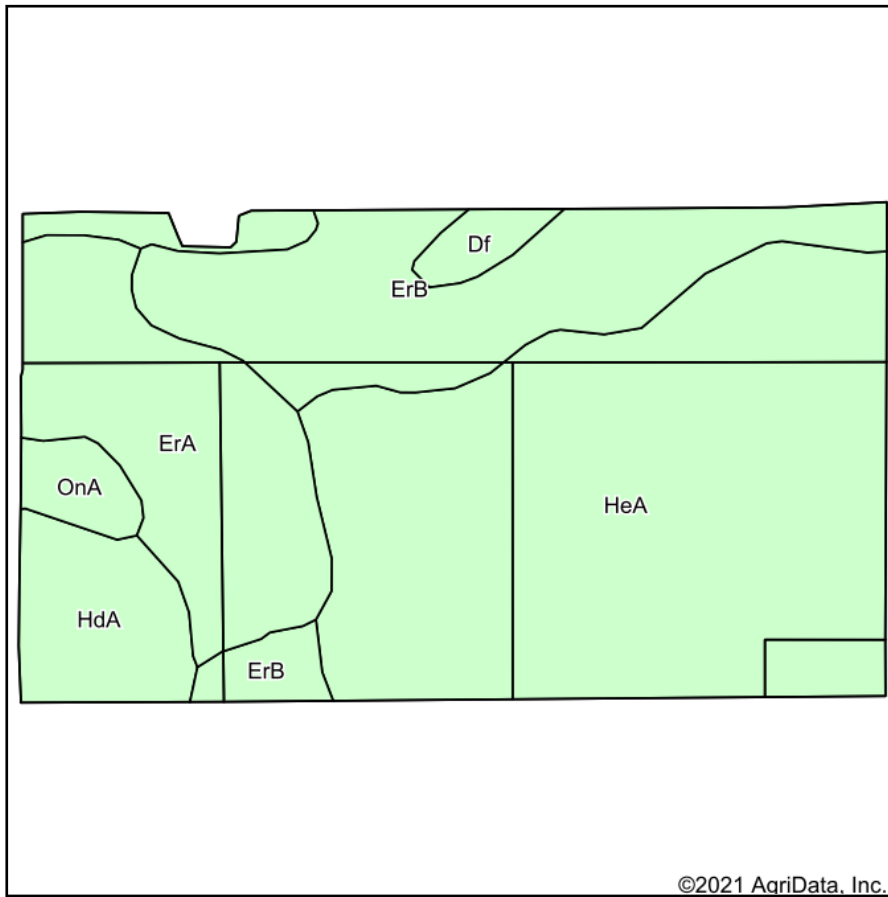


Area Symbol: SD069, Soil Area Version: 25

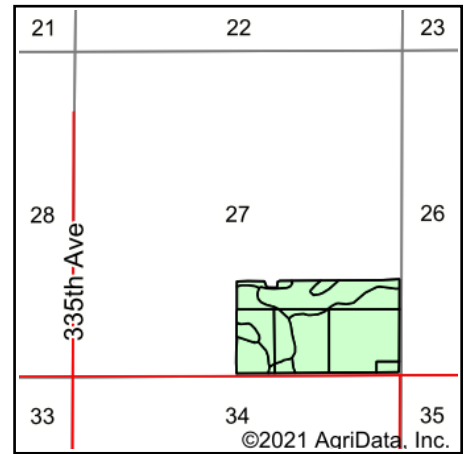
Code	Soil Description	Acres	Percent of field	Non-Irr Class *c	Productivity Index
HeA	Highmore silt loam, 0 to 2 percent slopes	45.56	29.2%	IIc	92
ErB	Eakin-Raber complex, 2 to 6 percent slopes	32.49	20.8%	Ile	76
Df	DeGrey-Walke silt loams, 0 to 2 percent slopes	18.55	11.9%	IVs	56
RpC	Raber-Peno loams, 6 to 9 percent slopes	15.93	10.2%	IIIe	52
RcA	Raber-Cavo loams, 0 to 2 percent slopes	15.78	10.1%	IIc	60
ErA	Eakin-Raber complex, 0 to 2 percent slopes	15.04	9.6%	IIc	83
HdA	Highmore-DeGrey silt loams, 0 to 2 percent slopes	5.99	3.8%	IIc	76
OnA	Mobridge silt loam, 0 to 2 percent slopes	5.70	3.6%	IIc	94
RcB	Raber-Cavo loams, 2 to 6 percent slopes	1.25	0.8%	Ile	57
<b>Weighted Average</b>				<b>2.34</b>	<b>75.4</b>

\*c: Using Capabilities Class Dominant Condition Aggregation Method  
 Soils data provided by USDA and NRCS.

# Soils Map



Soils data provided by USDA and NRCS.



State: **South Dakota**  
 County: **Hyde**  
 Location: **27-111N-72W**  
 Township: **Central Hyde**  
 Acres: **89.88**  
 Date: **12/2/2021**

**ADVANTAGE**  
*Land Co.*

Maps Provided By:

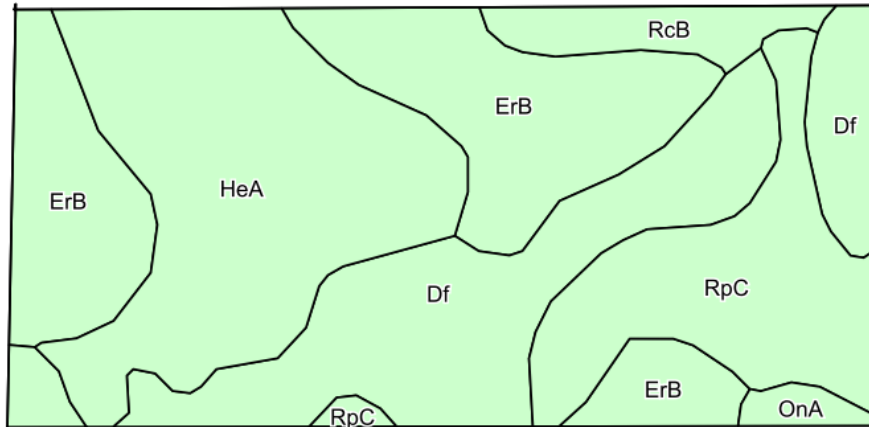


Area Symbol: SD069, Soil Area Version: 25

Code	Soil Description	Acres	Percent of field	Non-Irr Class *c	Productivity Index
HeA	Highmore silt loam, 0 to 2 percent slopes	45.54	50.7%	IIc	92
ErB	Eakin-Raber complex, 2 to 6 percent slopes	18.36	20.4%	Ile	76
ErA	Eakin-Raber complex, 0 to 2 percent slopes	15.04	16.7%	IIc	83
HdA	Highmore-DeGrey silt loams, 0 to 2 percent slopes	5.99	6.7%	IIc	76
OnA	Mobridge silt loam, 0 to 2 percent slopes	3.56	4.0%	IIc	94
Df	DeGrey-Walke silt loams, 0 to 2 percent slopes	1.39	1.5%	IVs	56
<b>Weighted Average</b>				<b>2.03</b>	<b>85.7</b>

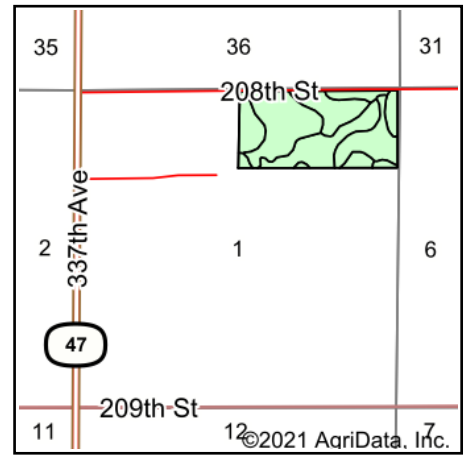
\*c: Using Capabilities Class Dominant Condition Aggregation Method  
 Soils data provided by USDA and NRCS.

# Soils Map



©2021 AgriData, Inc.

Soils data provided by USDA and NRCS.



State: **South Dakota**  
 County: **Hyde**  
 Location: **1-110N-72W**  
 Township: **Central Hyde**  
 Acres: **77.2**  
 Date: **12/2/2021**

**ADVANTAGE**  
*Land Co.*

Maps Provided By:



Area Symbol: SD069, Soil Area Version: 25

Code	Soil Description	Acres	Percent of field	Non-Irr Class *c	Productivity Index
HeA	Highmore silt loam, 0 to 2 percent slopes	21.35	27.7%	IIc	92
ErB	Eakin-Raber complex, 2 to 6 percent slopes	20.22	26.2%	IIe	76
Df	DeGrey-Walke silt loams, 0 to 2 percent slopes	19.35	25.1%	IVs	56
RpC	Raber-Peno loams, 6 to 9 percent slopes	12.20	15.8%	IIIe	52
RcB	Raber-Cavo loams, 2 to 6 percent slopes	3.13	4.1%	IIe	57
OnA	Mobridge silt loam, 0 to 2 percent slopes	0.95	1.2%	IIc	94
<b>Weighted Average</b>				<b>2.66</b>	<b>71.1</b>

\*c: Using Capabilities Class Dominant Condition Aggregation Method  
 Soils data provided by USDA and NRCS.