




United States  
Department of  
Agriculture

## Hyde County, South Dakota




Common Land Unit  PLSS

 Non-Cropland


 Tract Boundary

Wetland Determination Identifiers

 Restricted Use

 Limited Restrictions

 Exempt from Conservation

 Compliance Provisions

Unless otherwise noted, crops listed below are:

Non-irrigated

Intended for Grain

Producer initial \_\_\_\_\_

Corn = Yellow

Date \_\_\_\_\_

Soybeans = Common

Wheat - HRS or HRW

Sunflowers = Oil or Non-oil

2021 Program Year

Map Created May 10, 2021

Farm 2516

1-110N-72W-Hyde

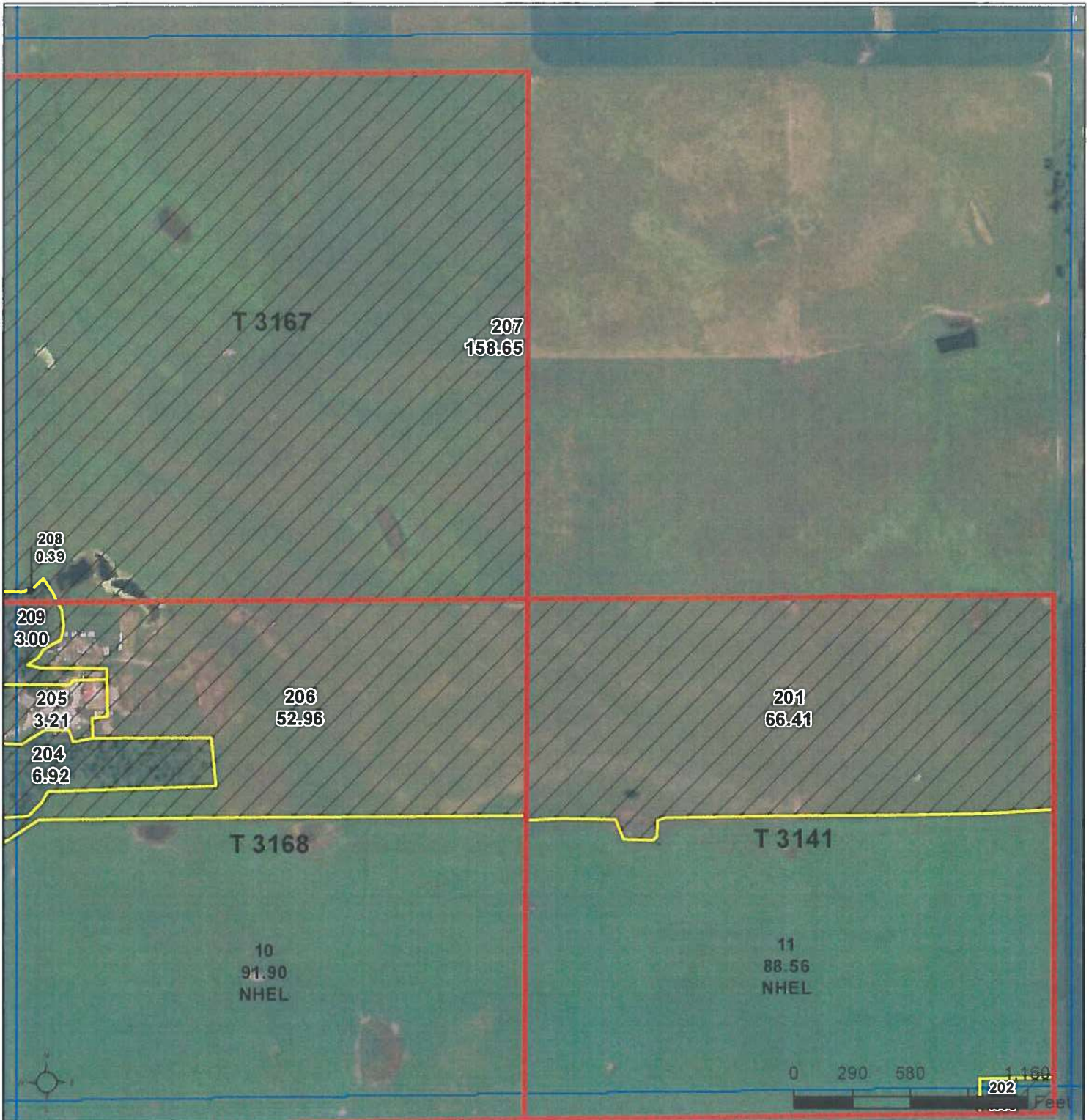
United States Department of Agriculture (USDA) Farm Service Agency (FSA) maps are for FSA Program administration only. This map does not represent a legal survey or reflect actual ownership, rather it depicts the information provided directly from the producer and/or National Agricultural Imagery Program (NAIP) imagery. The producer accepts the data 'as is' and assumes all risks associated with its use. USDA-FSA assumes no responsibility for actual or consequential damage incurred as a result of any user's reliance on this data outside FSA Programs. Wetland identifiers do not represent the size, shape, or specific determination of the area. Refer to your original determination (CPA-026 and attached maps) for exact boundaries and determinations or contact USDA Natural Resources Conservation Service (NRCS).





United States  
Department of  
Agriculture

## Hyde County, South Dakota



### Common Land Unit

- Non-Cropland
- Cropland

- Tract Boundary
- PLSS

### Wetland Determination Identifiers

- Restricted Use
- Limited Restrictions
- Exempt from Conservation Compliance Provisions

Unless otherwise noted, crops listed below are:  
Non-irrigated  
Intended for Grain  
Corn = Yellow  
Soybeans = Common  
Wheat - HRS or HRW  
Sunflowers = Oil or Non-oil

Producer initial \_\_\_\_\_  
Date \_\_\_\_\_

2021 Program Year

Map Created May 10, 2021

Farm 2624

27-111N-72W-Hyde

United States Department of Agriculture (USDA) Farm Service Agency (FSA) maps are for FSA Program administration only. This map does not represent a legal survey or reflect actual ownership, rather it depicts the information provided directly from the producer and/or National Agricultural Imagery Program (NAIP) imagery. The producer accepts the data 'as is' and assumes all risks associated with its use. USDA-FSA assumes no responsibility for actual or consequential damage incurred as a result of any user's reliance on this data outside FSA Programs. Wetland identifiers do not represent the size, shape, or specific determination of the area. Refer to your original determination (CPA-026 and attached maps) for exact boundaries and determinations or contact USDA Natural Resources Conservation Service (NRCS).