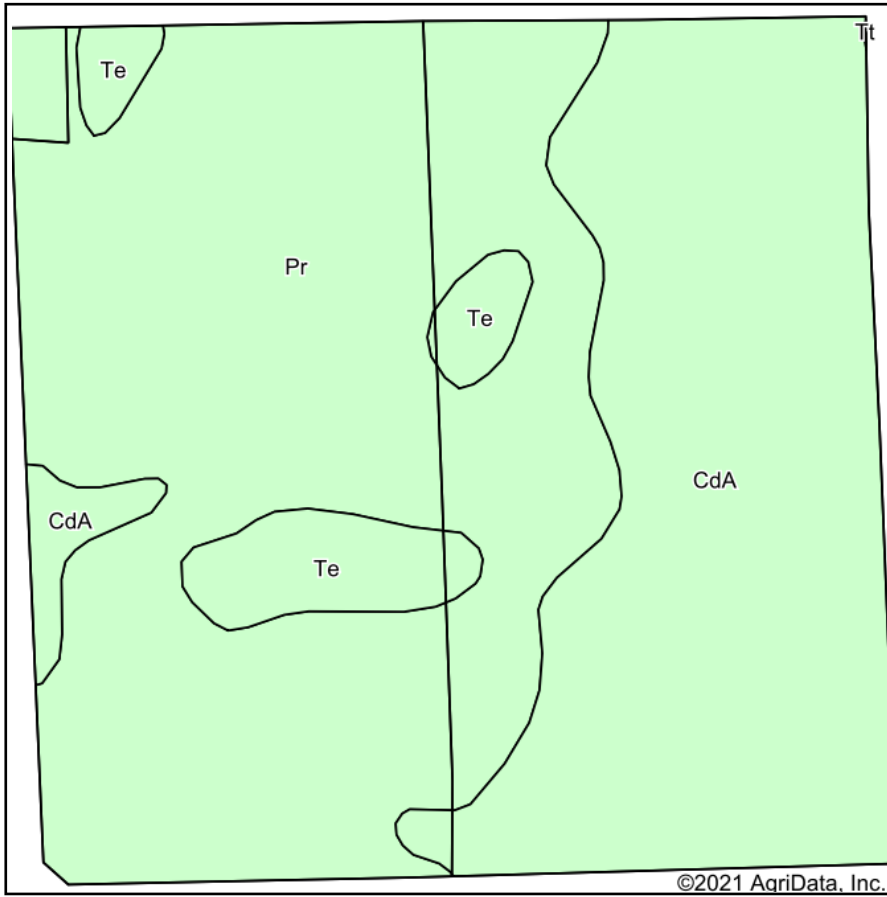
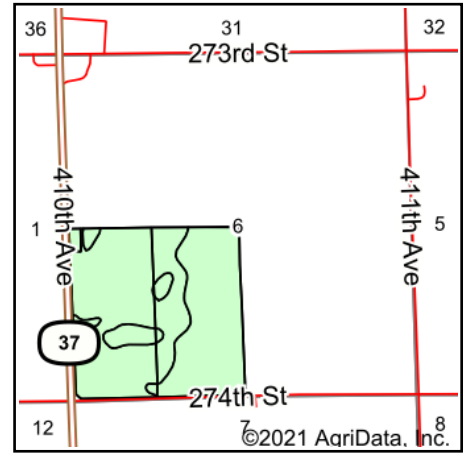


# Soils Map



Soils data provided by USDA and NRCS.



State: **South Dakota**  
 County: **Hutchinson**  
 Location: **6-99N-60W**  
 Township: **Liberty**  
 Acres: **151.8**  
 Date: **11/2/2021**

**ADVANTAGE**  
*Land Co.*

Maps Provided By:  
  
 © AgriData, Inc. 2021 www.AgriDataInc.com



Area Symbol: SD602, Soil Area Version: 23

Code	Soil Description	Acres	Percent of field	Non-Irr Class *c	Productivity Index
Pr	Prosper-Stickney complex, 0 to 2 percent slopes	84.02	55.3%	IIc	85
CdA	Clarno-Bonilla loams, 0 to 2 percent slopes	59.10	38.9%	IIc	88
Te	Tetonka silt loam, 0 to 1 percent slopes	8.68	5.7%	IVw	56
<b>Weighted Average</b>				<b>2.11</b>	<b>84.5</b>

\*c: Using Capabilities Class Dominant Condition Aggregation Method  
 Soils data provided by USDA and NRCS.