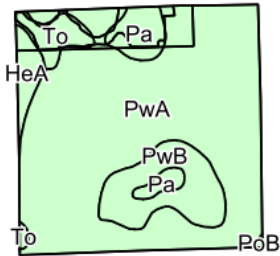
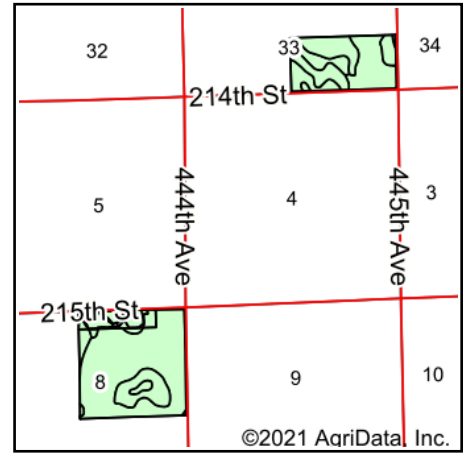


# Soils Map



©2021 AgriData, Inc.

Soils data provided by USDA and NRCS.



©2021 AgriData, Inc.

State: **South Dakota**  
 County: **Kingsbury**  
 Location: **8-109N-54W**  
 Township: **Whitewood**  
 Acres: **232.9**  
 Date: **10/22/2021**

**ADVANTAGE**  
*Land Co.*

Maps Provided By:



Area Symbol: SD077, Soil Area Version: 24

Code	Soil Description	Acres	Percent of field	Non-Irr Class *c	Productivity Index
PwA	Poinsett-Waubay silty clay loams, 0 to 2 percent slopes	153.33	65.8%	Is	93
PwB	Poinsett-Waubay silty clay loams, 1 to 6 percent slopes	49.68	21.3%	Ile	89
Pa	Parnell silty clay loam	18.11	7.8%	Vw	34
To	Tonka silty clay loam, 0 to 1 percent slopes	6.10	2.6%	IVw	58
HeA	Hetland silty clay loam, 0 to 2 percent slopes	4.74	2.0%	Is	89
Wb	Waubay-Badger silty clay loams, 0 to 2 percent slopes	0.76	0.3%	Iw	91
PoB	Poinsett-Buse-Waubay complex, 1 to 6 percent slopes	0.18	0.1%	Ile	81
<b>Weighted Average</b>				<b>1.60</b>	<b>86.5</b>

\*c: Using Capabilities Class Dominant Condition Aggregation Method  
 Soils data provided by USDA and NRCS.