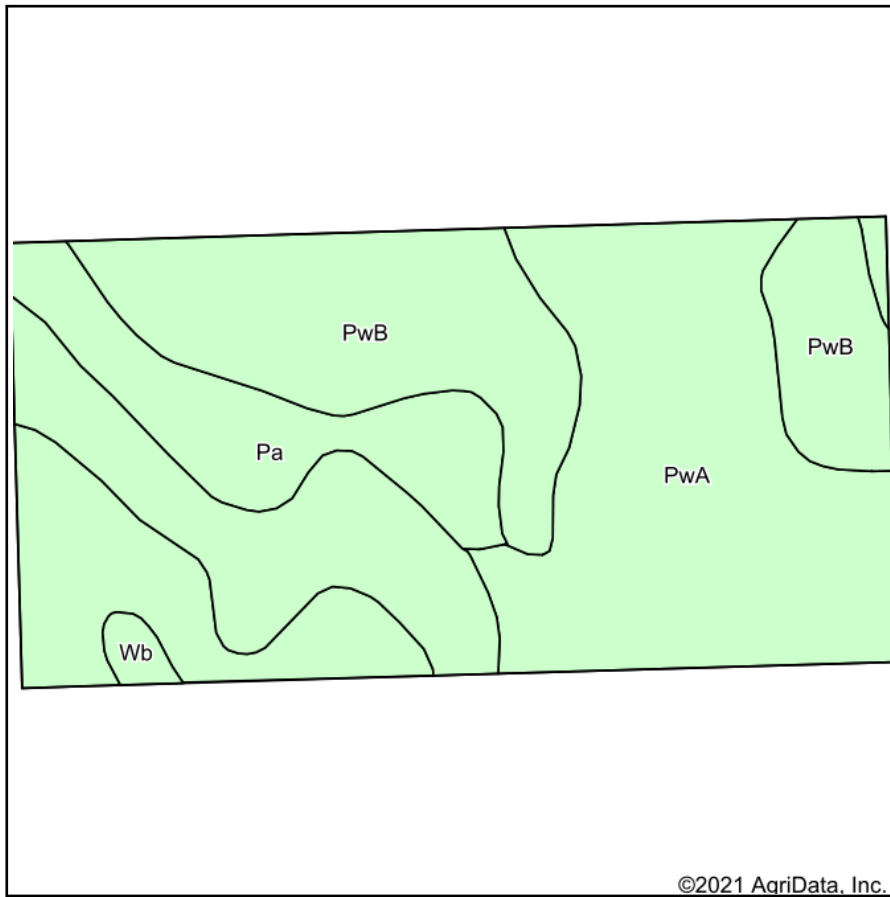
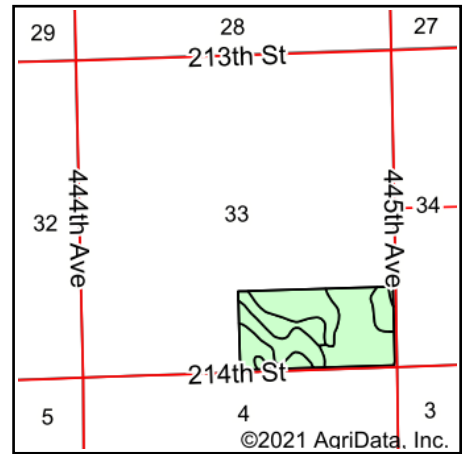


# Soils Map



Soils data provided by USDA and NRCS.



State: **South Dakota**  
 County: **Kingsbury**  
 Location: **33-110N-54W**  
 Township: **Whitewood**  
 Acres: **77.62**  
 Date: **10/22/2021**

**ADVANTAGE**  
*Land Co.*

Maps Provided By:



Area Symbol: SD077, Soil Area Version: 24

| Code                    | Soil Description  | Acres | Percent of field | Non-Irr Class *c | Productivity Index |
|-------------------------|---|-------|------------------|------------------|--------------------|
| PwA                     | Poinsett-Waubay silty clay loams, 0 to 2 percent slopes | 35.39 | 45.6%            | Is               | 93                 |
| PwB                     | Poinsett-Waubay silty clay loams, 1 to 6 percent slopes | 32.02 | 41.3%            | Ile              | 89                 |
| Pa                      | Parnell silty clay loam                                 | 9.45  | 12.2%            | Vw               | 34                 |
| Wb                      | Waubay-Badger silty clay loams, 0 to 2 percent slopes   | 0.76  | 1.0%             | Iw               | 91                 |
| <b>Weighted Average</b> |   |       |                  | <b>1.90</b>      | <b>84.1</b>        |

\*c: Using Capabilities Class Dominant Condition Aggregation Method  
 Soils data provided by USDA and NRCS.