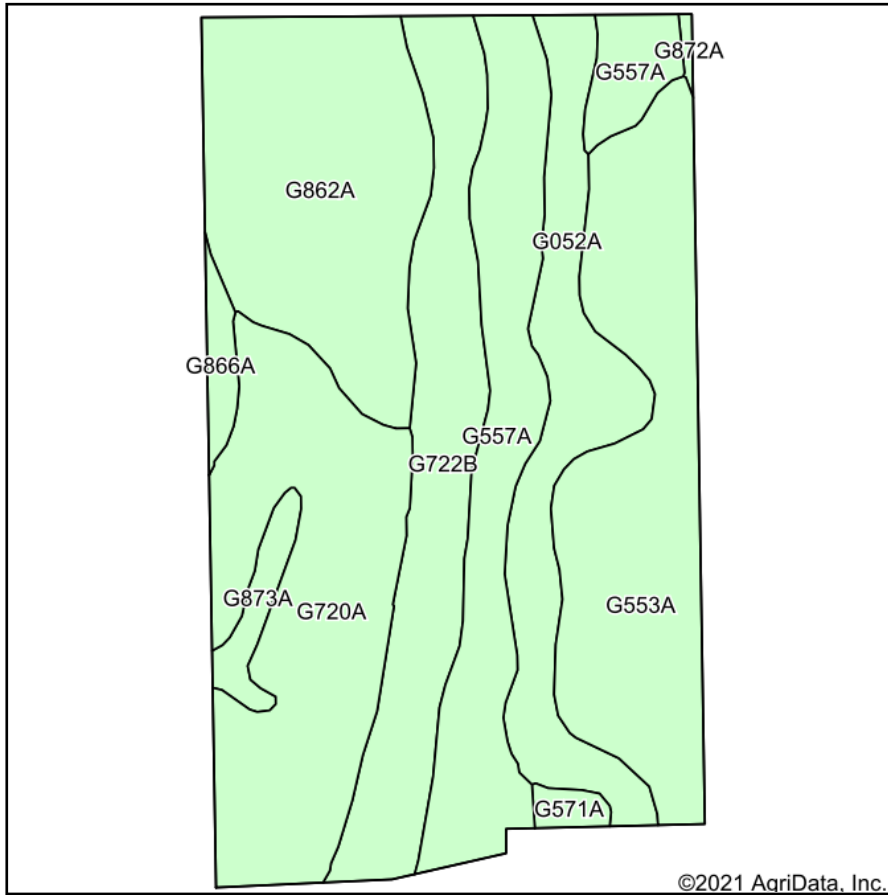
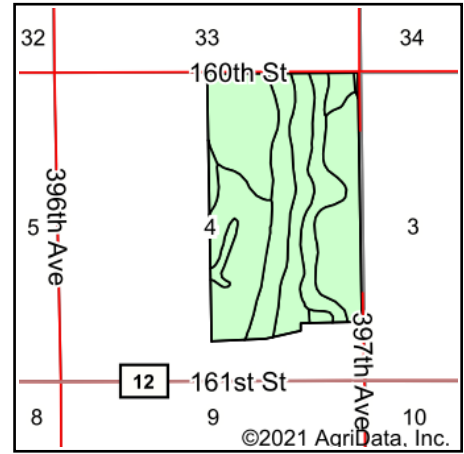


Soils Map



Soils data provided by USDA and NRCS.



State: **South Dakota**
 County: **Spink**
 Location: **4-118N-62W**
 Township: **Clifton**
 Acres: **269.72**
 Date: **9/30/2021**

ADVANTAGE
Land Co.

Maps Provided By:

 CUSTOMIZED ONLINE MAPPING
 © AgriData, Inc. 2021 www.AgriDataInc.com



Area Symbol: SD115, Soil Area Version: 21

Code	Soil Description	Acres	Percent of field	Non-Irr Class *c	Productivity Index
G720A	Great Bend-Beotia silt loams, 0 to 2 percent slopes	51.95	19.3%	IIc	95
G553A	Ranslo-Harriet loams, 0 to 2 percent slopes, occasionally flooded	51.35	19.0%	IVs	27
G862A	Harmony-Beotia silt loams, 0 to 2 percent slopes	47.78	17.7%	IIIs	92
G557A	Ranslo silty clay loam, 0 to 1 percent slopes, occasionally flooded	40.84	15.1%	IVs	31
G722B	Great Bend-Zell silt loams, 2 to 6 percent slopes	37.66	14.0%	IIe	77
G052A	Rauville silty clay loam, 0 to 1 percent slopes, frequently flooded	29.94	11.1%	VIW	24
G873A	Beotia-Winship silt loams, 0 to 2 percent slopes	4.59	1.7%	IIc	93
G866A	Harmony-Aberdeen silty clay loams, 0 to 2 percent slopes	3.27	1.2%	IIIs	80
G571A	LaDelle silt loam, 0 to 2 percent slopes, occasionally flooded	1.85	0.7%	IIc	92
G872A	Beotia-Rondell silt loams, 0 to 2 percent slopes	0.49	0.2%	IIc	91
Weighted Average					61.2

*c: Using Capabilities Class Dominant Condition Aggregation Method
 Soils data provided by USDA and NRCS.