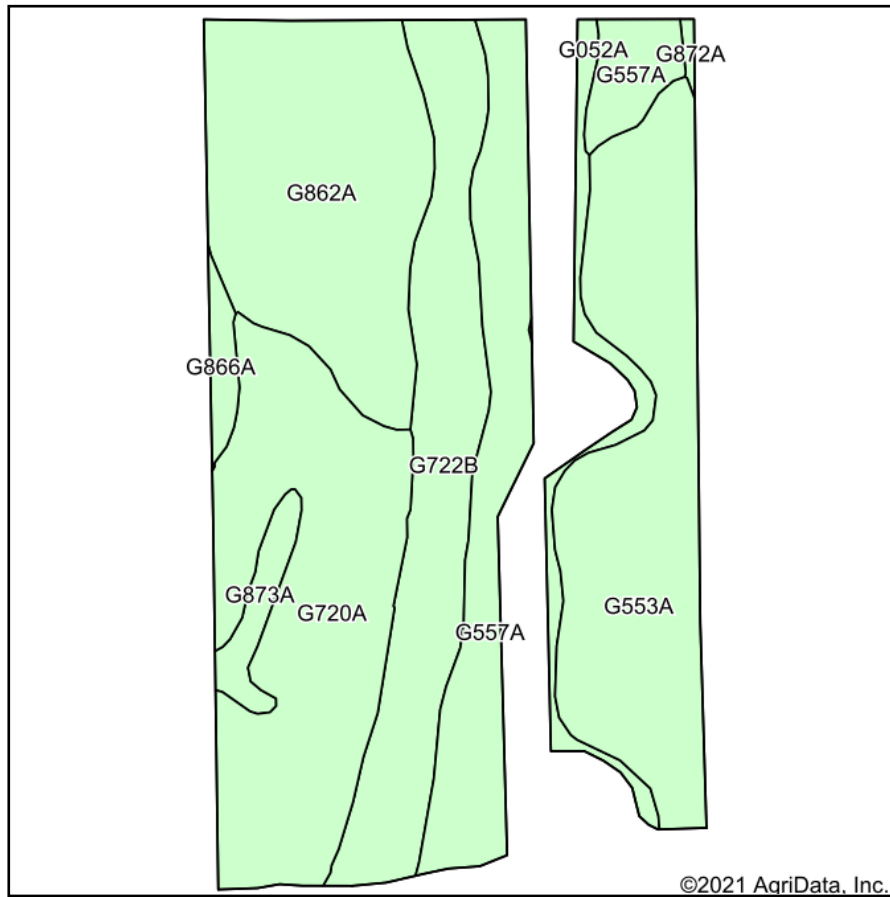
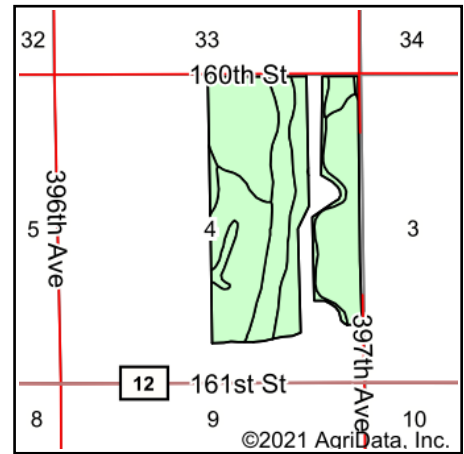


Soils Map



Soils data provided by USDA and NRCS.



State: **South Dakota**
 County: **Spink**
 Location: **4-118N-62W**
 Township: **Clifton**
 Acres: **235.96**
 Date: **9/30/2021**

ADVANTAGE
Land Co.

Maps Provided By:



Area Symbol: SD115, Soil Area Version: 21

Code	Soil Description	Acres	Percent of field	Non-Irr Class *c	Productivity Index
G720A	Great Bend-Beotia silt loams, 0 to 2 percent slopes	51.29	21.7%	IIc	95
G553A	Ranslo-Harriet loams, 0 to 2 percent slopes, occasionally flooded	50.89	21.6%	IVs	27
G862A	Harmony-Beotia silt loams, 0 to 2 percent slopes	47.05	19.9%	IIIs	92
G722B	Great Bend-Zell silt loams, 2 to 6 percent slopes	37.54	15.9%	IIe	77
G557A	Ranslo silty clay loam, 0 to 1 percent slopes, occasionally flooded	33.82	14.3%	IVs	31
G052A	Rauville silty clay loam, 0 to 1 percent slopes, frequently flooded	7.52	3.2%	VIW	24
G873A	Beotia-Winship silt loams, 0 to 2 percent slopes	4.52	1.9%	IIc	93
G866A	Harmony-Aberdeen silty clay loams, 0 to 2 percent slopes	2.85	1.2%	IIIs	80
G872A	Beotia-Rondell silt loams, 0 to 2 percent slopes	0.48	0.2%	IIc	91
Weighted Average					65.2

*c: Using Capabilities Class Dominant Condition Aggregation Method
 Soils data provided by USDA and NRCS.