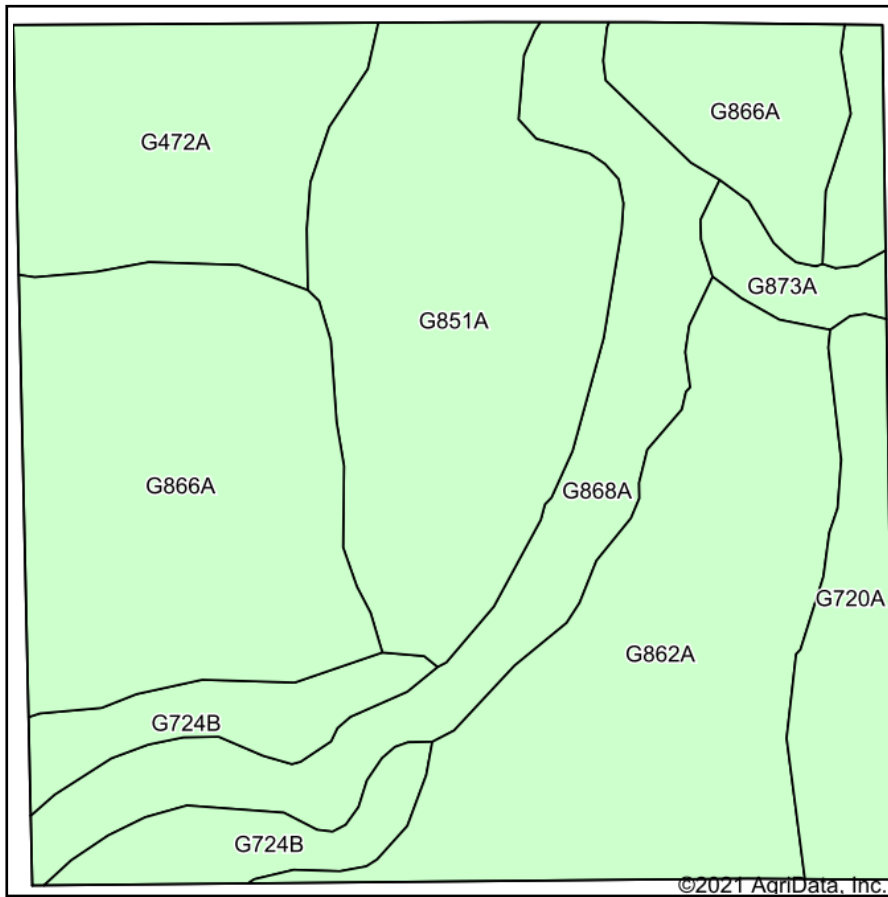
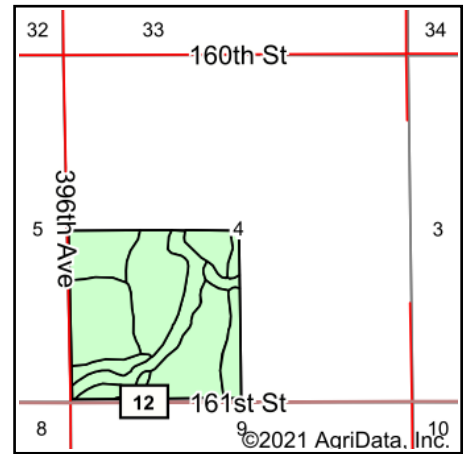


Soils Map



Soils data provided by USDA and NRCS.



State: **South Dakota**
 County: **Spink**
 Location: **4-118N-62W**
 Township: **Clifton**
 Acres: **156.51**
 Date: **9/20/2021**

ADVANTAGE
Land Co.

Maps Provided By:

 © AgriData, Inc. 2021 www.AgriDataInc.com



Area Symbol: SD115, Soil Area Version: 21

| Code | Soil Description | Acres | Percent of field | Non-Irr Class *c | Productivity Index |
|------------------|--|-------|------------------|------------------|--------------------|
| G866A | Harmony-Aberdeen silty clay loams, 0 to 2 percent slopes | 36.12 | 23.1% | IIIs | 80 |
| G862A | Harmony-Beotia silt loams, 0 to 2 percent slopes | 31.38 | 20.0% | IIIs | 92 |
| G851A | Nahon-Aberdeen-Exline silt loams, 0 to 2 percent slopes | 29.79 | 19.0% | IVs | 46 |
| G868A | Winship-Tonka silt loams, 0 to 1 percent slopes | 18.66 | 11.9% | IIw | 71 |
| G472A | Aberdeen-Nahon silty clay loams, 0 to 2 percent slopes | 16.44 | 10.5% | IIIs | 59 |
| G720A | Great Bend-Beotia silt loams, 0 to 2 percent slopes | 11.33 | 7.2% | IIc | 95 |
| G724B | Great Bend-Putney silt loams, 2 to 6 percent slopes | 10.02 | 6.4% | Ile | 83 |
| G873A | Beotia-Winship silt loams, 0 to 2 percent slopes | 2.77 | 1.8% | IIc | 93 |
| Weighted Average | | | | | 74.2 |

*c: Using Capabilities Class Dominant Condition Aggregation Method
 Soils data provided by USDA and NRCS.