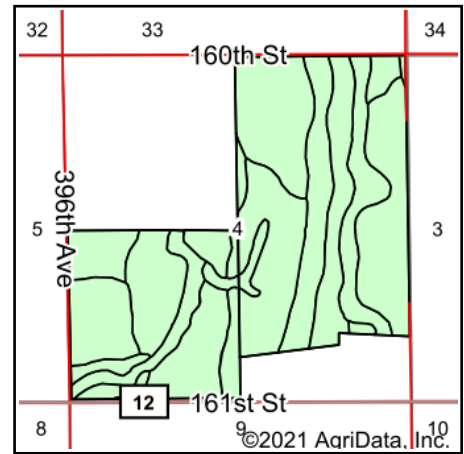
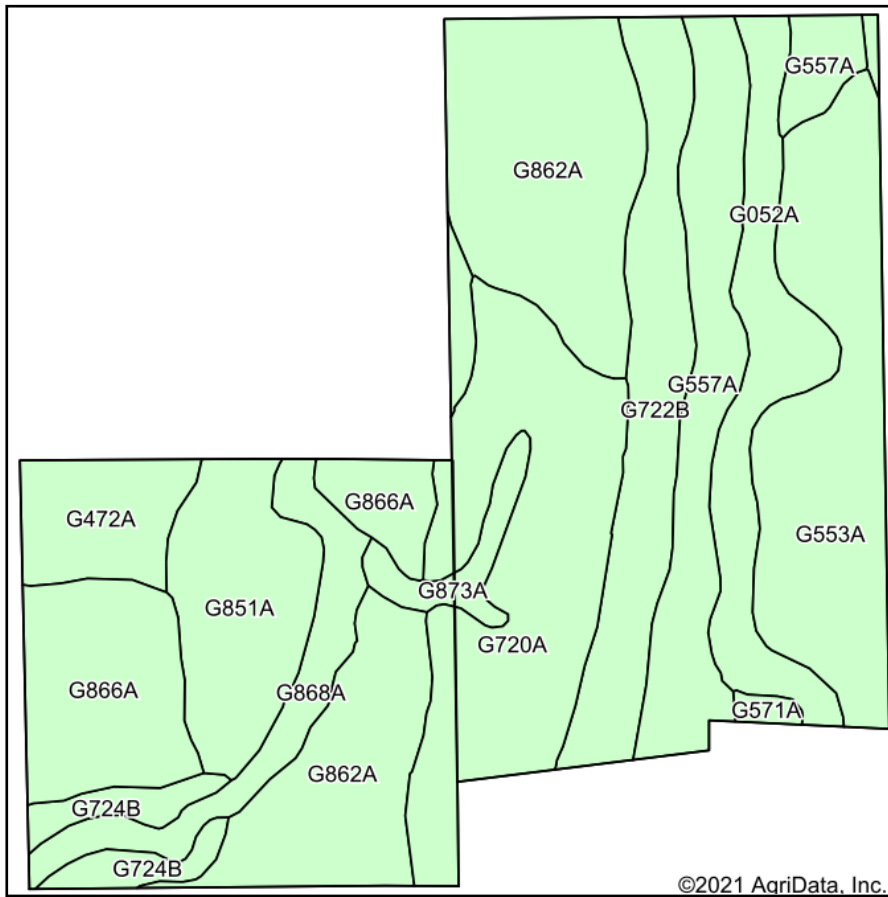


Soils Map



State: **South Dakota**
 County: **Spink**
 Location: **4-118N-62W**
 Township: **Clifton**
 Acres: **425.7**
 Date: **9/20/2021**

ADVANTAGE
Land Co.

Maps Provided By:

 CUSTOMIZED ONLINE MAPPING
 © AgriData, Inc. 2021 www.AgriDataInc.com



Area Symbol: SD115, Soil Area Version: 21

Code	Soil Description	Acres	Percent of field	Non-Irr Class *c	Productivity Index
G862A	Harmony-Beotia silt loams, 0 to 2 percent slopes	78.99	18.6%	IIIs	92
G720A	Great Bend-Beotia silt loams, 0 to 2 percent slopes	62.40	14.7%	IIc	95
G553A	Ranslo-Harriet loams, 0 to 2 percent slopes, occasionally flooded	53.69	12.6%	IVs	27
G557A	Ranslo silty clay loam, 0 to 1 percent slopes, occasionally flooded	40.19	9.4%	IVs	31
G866A	Harmony-Aberdeen silty clay loams, 0 to 2 percent slopes	39.14	9.2%	IIIs	80
G722B	Great Bend-Zell silt loams, 2 to 6 percent slopes	36.94	8.7%	IIe	77
G052A	Rauville silty clay loam, 0 to 1 percent slopes, frequently flooded	29.85	7.0%	VIW	24
G851A	Nahon-Aberdeen-Exline silt loams, 0 to 2 percent slopes	29.79	7.0%	IVs	46
G868A	Winship-Tonka silt loams, 0 to 1 percent slopes	18.66	4.4%	IIW	71
G472A	Aberdeen-Nahon silty clay loams, 0 to 2 percent slopes	16.44	3.9%	IIIs	59
G724B	Great Bend-Putney silt loams, 2 to 6 percent slopes	10.02	2.4%	IIe	83
G873A	Beotia-Winship silt loams, 0 to 2 percent slopes	7.29	1.7%	IIc	93
G571A	LaDelle silt loam, 0 to 2 percent slopes, occasionally flooded	1.52	0.4%	IIc	92
G872A	Beotia-Rondell silt loams, 0 to 2 percent slopes	0.78	0.2%	IIc	91
Weighted Average					65.7

*c: Using Capabilities Class Dominant Condition Aggregation Method
 Soils data provided by USDA and NRCS.