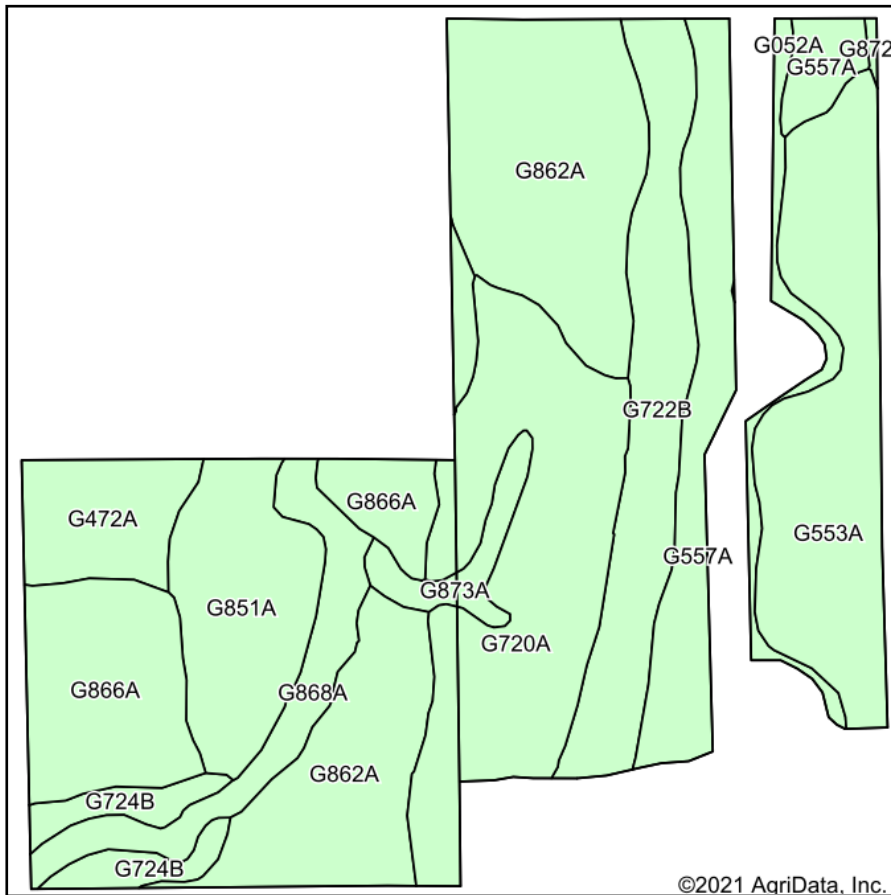
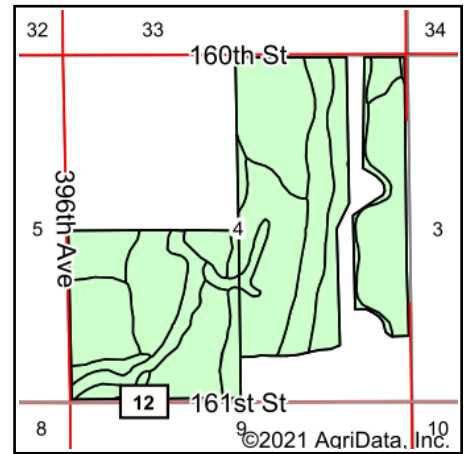


Soils Map



Soils data provided by USDA and NRCS.



State: **South Dakota**
 County: **Spink**
 Location: **4-118N-62W**
 Township: **Clifton**
 Acres: **392.47**
 Date: **9/20/2021**

ADVANTAGE
Land Co.

Maps Provided By:

 CUSTOMIZED ONLINE MAPPING
 © AgriData, Inc. 2021 www.AgriDataInc.com



Area Symbol: SD115, Soil Area Version: 21

Code	Soil Description	Acres	Percent of field	Non-Irr Class *c	Productivity Index
G862A	Harmony-Beotia silt loams, 0 to 2 percent slopes	78.44	20.0%	IIs	92
G720A	Great Bend-Beotia silt loams, 0 to 2 percent slopes	62.62	16.0%	IIc	95
G553A	Ranslo-Harriet loams, 0 to 2 percent slopes, occasionally flooded	50.89	13.0%	IVs	27
G866A	Harmony-Aberdeen silty clay loams, 0 to 2 percent slopes	38.96	9.9%	IIs	80
G722B	Great Bend-Zell silt loams, 2 to 6 percent slopes	37.54	9.6%	IIe	77
G557A	Ranslo silty clay loam, 0 to 1 percent slopes, occasionally flooded	33.82	8.6%	IVs	31
G851A	Nahon-Aberdeen-Exline silt loams, 0 to 2 percent slopes	29.79	7.6%	IVs	46
G868A	Winship-Tonka silt loams, 0 to 1 percent slopes	18.66	4.8%	IIw	71
G472A	Aberdeen-Nahon silty clay loams, 0 to 2 percent slopes	16.44	4.2%	IIIs	59
G724B	Great Bend-Putney silt loams, 2 to 6 percent slopes	10.02	2.6%	IIe	83
G052A	Rauville silty clay loam, 0 to 1 percent slopes, frequently flooded	7.52	1.9%	VIw	24
G873A	Beotia-Winship silt loams, 0 to 2 percent slopes	7.29	1.9%	IIc	93
G872A	Beotia-Rondell silt loams, 0 to 2 percent slopes	0.48	0.1%	IIc	91
Weighted Average					68.8

*c: Using Capabilities Class Dominant Condition Aggregation Method
 Soils data provided by USDA and NRCS.