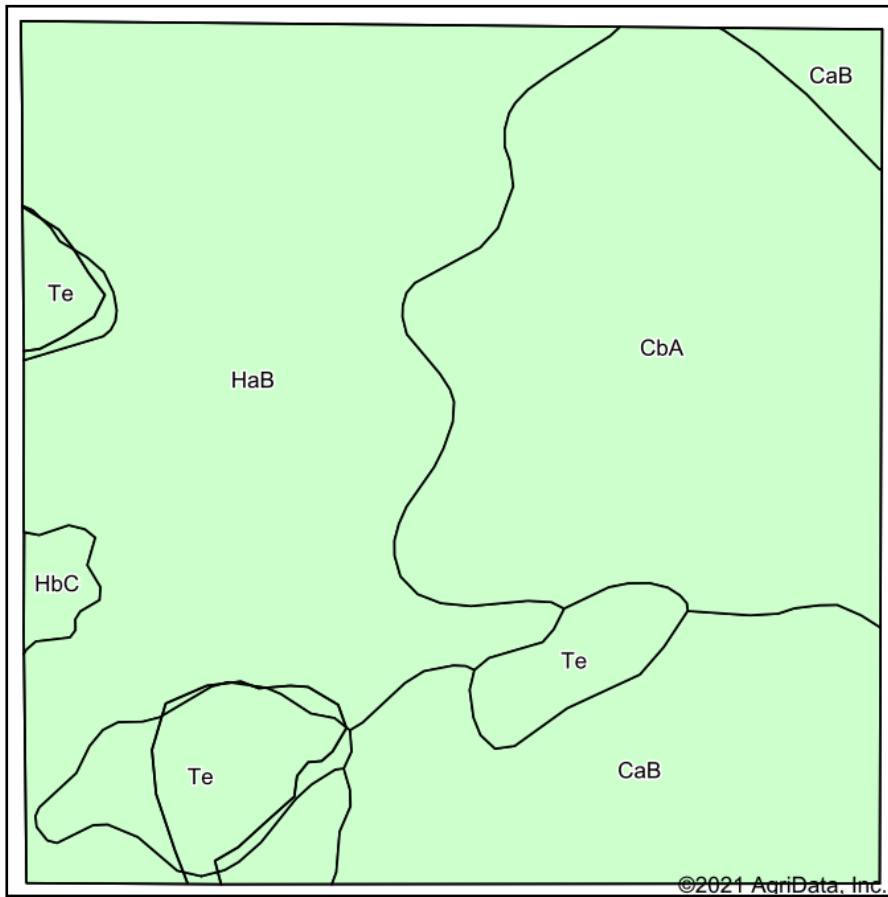
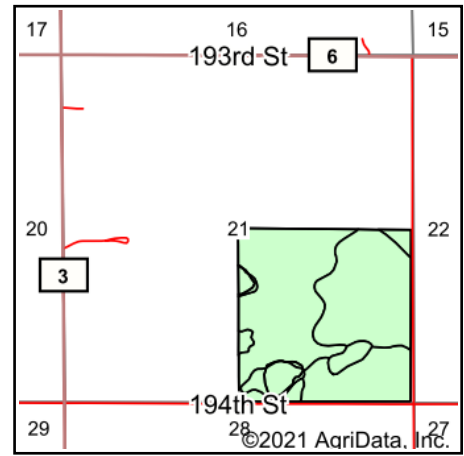


Soils Map



Soils data provided by USDA and NRCS.



State: **South Dakota**
 County: **Beadle**
 Location: **21-113N-65W**
 Township: **Nance**
 Acres: **156.53**
 Date: **9/1/2021**

ADVANTAGE
Land Co.

Maps Provided By:



Area Symbol: SD005, Soil Area Version: 25

| Code | Soil Description | Acres | Percent of field | Non-Irr Class *c | Productivity Index |
|-------------------------|--|-------|------------------|------------------|--------------------|
| HaB | Hand-Bonilla loams, 3 to 6 percent slopes | 65.43 | 41.8% | Ile | 79 |
| CbA | Carthage-Blendon fine sandy loams, 0 to 2 percent slopes | 49.03 | 31.3% | IIle | 66 |
| CaB | Carthage fine sandy loam, 2 to 6 percent slopes | 27.12 | 17.3% | IIIle | 62 |
| Te | Tetonka-Hoven silt loams | 13.42 | 8.6% | IVw | 48 |
| HbC | Hand-Ethan loams, 6 to 9 percent slopes | 1.53 | 1.0% | IIle | 56 |
| Weighted Average | | | | | 69.1 |

*c: Using Capabilities Class Dominant Condition Aggregation Method
 Soils data provided by USDA and NRCS.