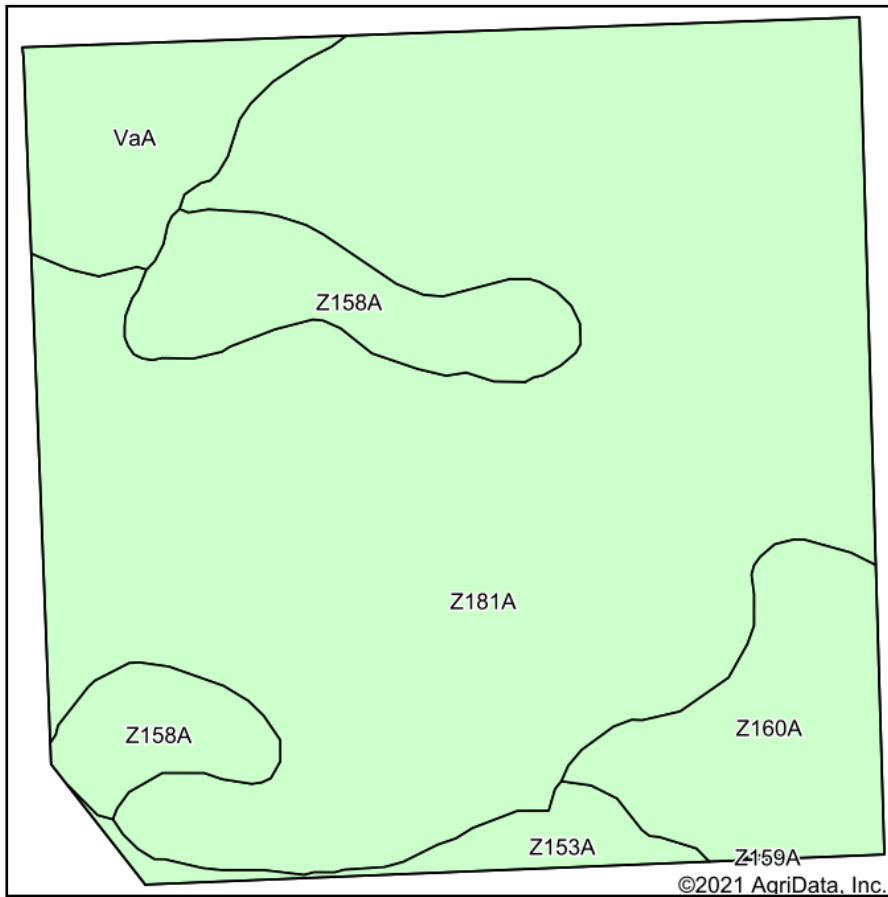
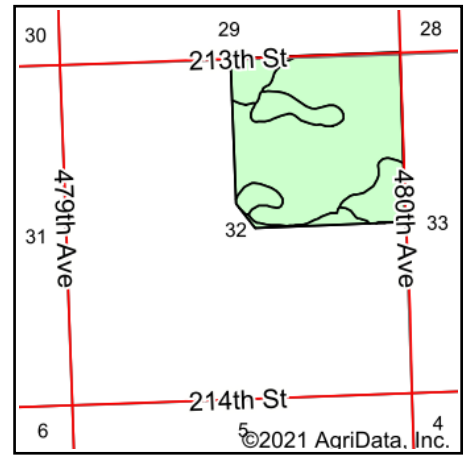


Soils Map



Soils data provided by USDA and NRCS.



State: **South Dakota**
 County: **Brookings**
 Location: **32-110N-48W**
 Township: **Alton**
 Acres: **158.13**
 Date: **9/13/2021**

ADVANTAGE
Land Co.

Maps Provided By:

 CUSTOMIZED ONLINE MAPPING
 © AgriData, Inc. 2021 www.AgriDataInc.com



Area Symbol: SD011, Soil Area Version: 28

Code	Soil Description	Acres	Percent of field	Non-Irr Class *c	Productivity Index
Z181A	Brandt silty clay loam, 0 to 2 percent slopes	114.78	72.6%	Is	86
Z158A	Marysland loam, 0 to 1 percent slopes, occasionally flooded	15.20	9.6%	IVw	32
Z160A	Moritz, occasionally flooded-Lamoure, frequently flooded, complex, 0 to 2 percent slopes	13.87	8.8%	IIIs	65
VaA	Venagro-Svea loams, 0 to 2 percent slopes	10.18	6.4%	Is	89
Z153A	Lamoure-Rauville silty clay loams, channeled, 0 to 2 percent slopes, frequently flooded	4.10	2.6%	VIw	13
Weighted Average					77.3

*c: Using Capabilities Class Dominant Condition Aggregation Method
 Soils data provided by USDA and NRCS.