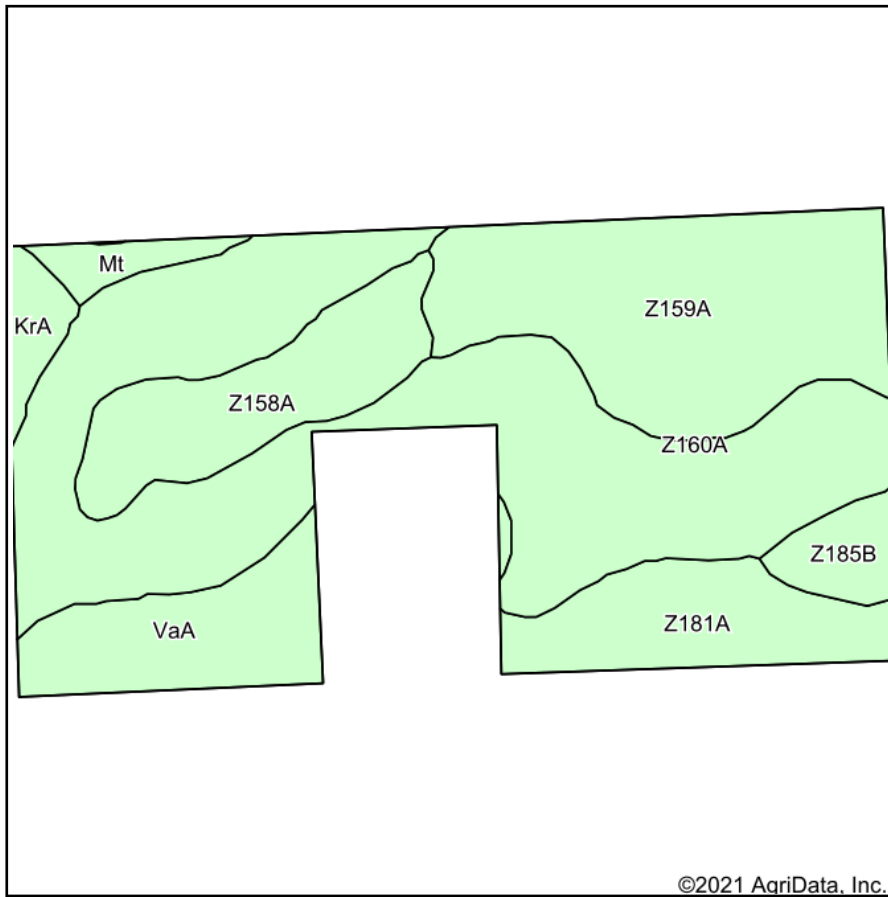
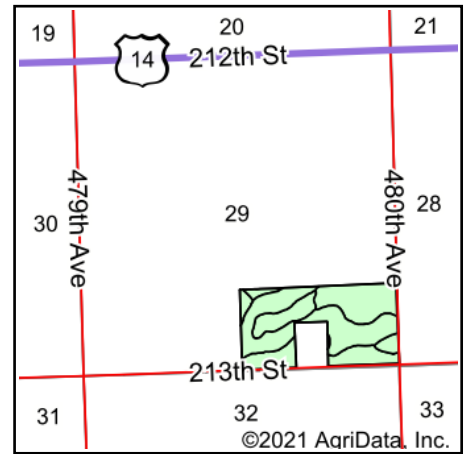


Soils Map



Soils data provided by USDA and NRCS.



State: **South Dakota**
 County: **Brookings**
 Location: **29-110N-48W**
 Township: **Alton**
 Acres: **71.75**
 Date: **9/13/2021**

ADVANTAGE
Land Co.

Maps Provided By:



Area Symbol: SD011, Soil Area Version: 28

Code	Soil Description	Acres	Percent of field	Non-Irr Class *c	Productivity Index
Z160A	Moritz, occasionally flooded-Lamoure, frequently flooded, complex, 0 to 2 percent slopes	29.61	41.3%	IIIs	65
Z159A	Divide loam, 0 to 2 percent slopes, occasionally flooded	16.06	22.4%	IIIIs	54
Z158A	Marysland loam, 0 to 1 percent slopes, occasionally flooded	7.54	10.5%	IVw	32
Z181A	Brandt silty clay loam, 0 to 2 percent slopes	6.83	9.5%	Is	86
VaA	Venagro-Svea loams, 0 to 2 percent slopes	6.64	9.3%	Is	89
Z185B	Egeland-Embsen complex, coteau, 2 to 6 percent slopes	2.15	3.0%	IIIe	54
KrA	Kranzburg-Brookings silty clay loams, 0 to 2 percent slopes	1.58	2.2%	Is	93
Mt	Mckranz-Badger silty clay loams, 0 to 2 percent slopes	1.34	1.9%	IIIs	79
Weighted Average					63.8

*c: Using Capabilities Class Dominant Condition Aggregation Method
 Soils data provided by USDA and NRCS.