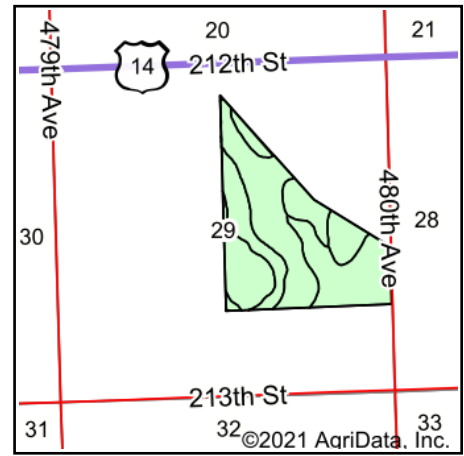
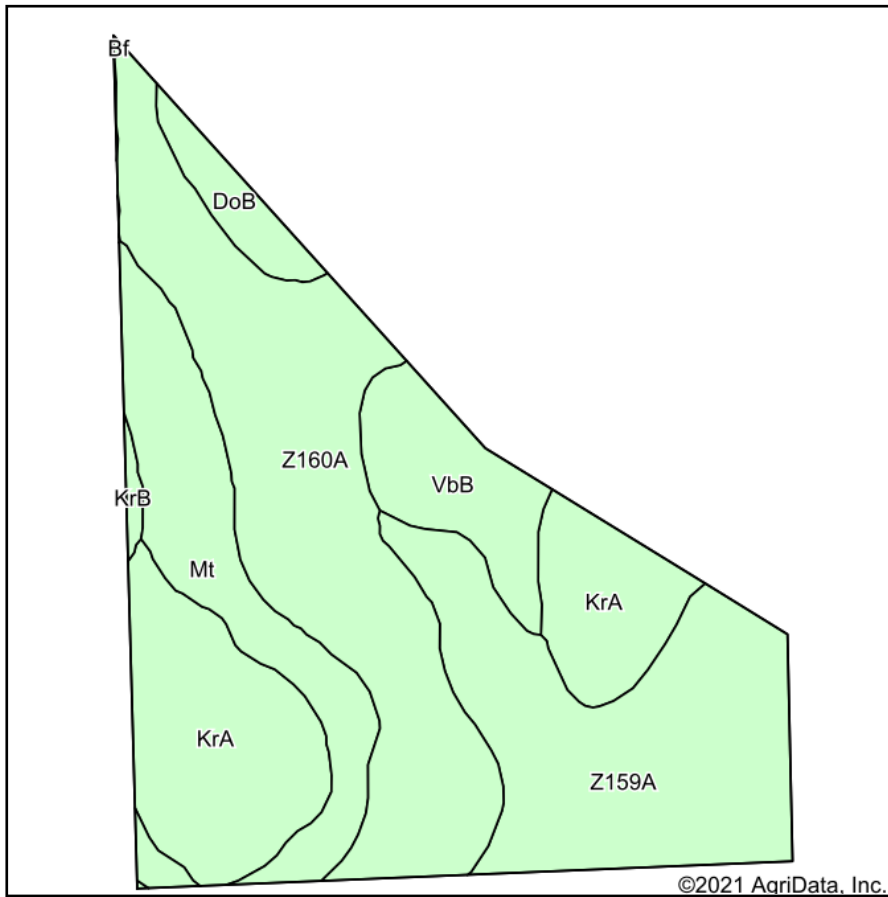


Soils Map



State: **South Dakota**
 County: **Brookings**
 Location: **29-110N-48W**
 Township: **Alton**
 Acres: **119.88**
 Date: **9/13/2021**

ADVANTAGE
Land Co.

Maps Provided By:

 CUSTOMIZED ONLINE MAPPING
 © AgriData, Inc. 2021 www.AgriDataInc.com



Area Symbol: SD011, Soil Area Version: 28

Code	Soil Description	Acres	Percent of field	Non-Irr Class *c	Productivity Index
Z160A	Moritz, occasionally flooded-Lamoure, frequently flooded, complex, 0 to 2 percent slopes	36.96	30.8%	IIIs	65
Z159A	Divide loam, 0 to 2 percent slopes, occasionally flooded	28.90	24.1%	IIIs	54
KrA	Kranzburg-Brookings silty clay loams, 0 to 2 percent slopes	24.09	20.1%	Is	93
Mt	Mckranz-Badger silty clay loams, 0 to 2 percent slopes	16.77	14.0%	IIIs	79
VbB	Vienna-Brookings complex, 1 to 6 percent slopes	8.93	7.4%	IIe	86
DoB	Doland loam, 2 to 6 percent slopes	3.52	2.9%	IIe	82
KrB	Kranzburg-Brookings silty clay loams, 1 to 6 percent slopes	0.65	0.5%	IIe	87
Bf	Brookings silty clay loam, 0 to 2 percent slopes	0.06	0.1%	Iw	96
Weighted Average					72.1

*c: Using Capabilities Class Dominant Condition Aggregation Method
 Soils data provided by USDA and NRCS.