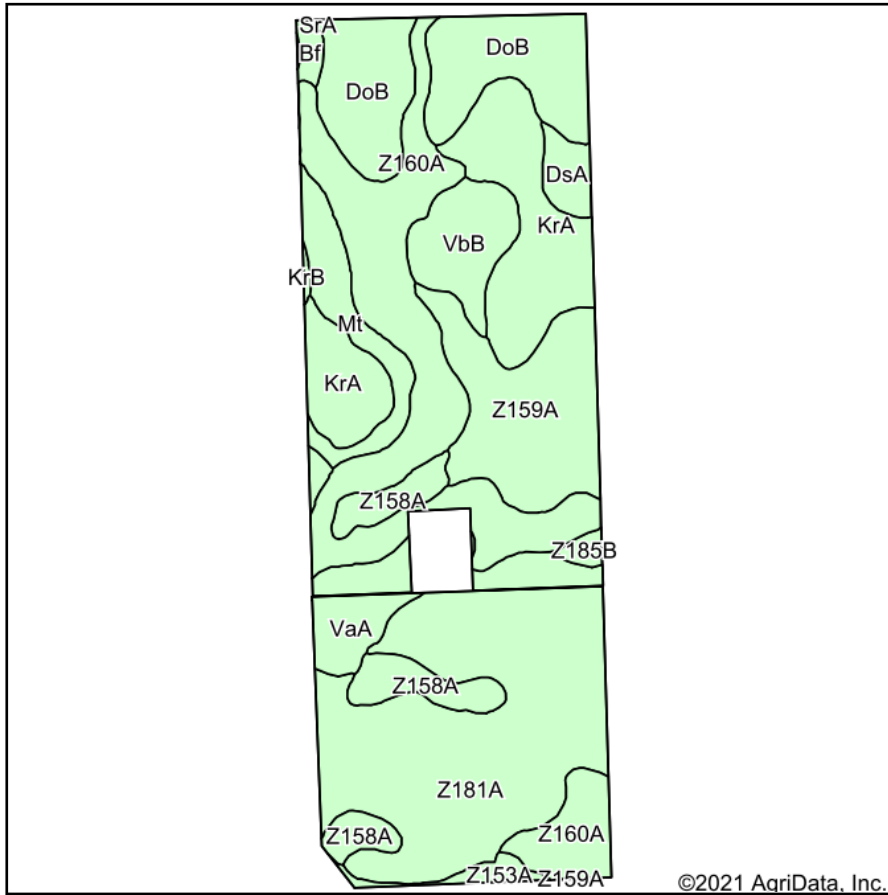
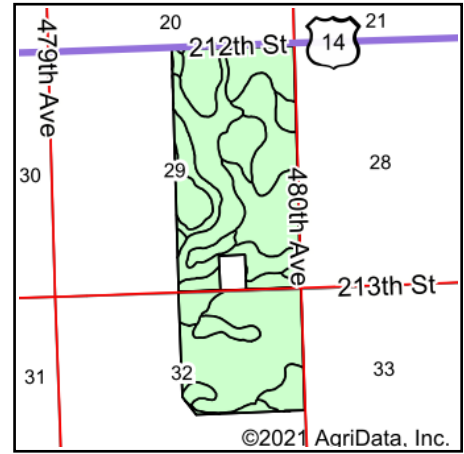


Soils Map



Soils data provided by USDA and NRCS.



State: **South Dakota**
 County: **Brookings**
 Location: **29-110N-48W**
 Township: **Alton**
 Acres: **462.74**
 Date: **9/13/2021**

ADVANTAGE
Land Co.

Maps Provided By:

 CUSTOMIZED ONLINE MAPPING
 © AgriData, Inc. 2021 www.AgriDataInc.com



Area Symbol: SD011, Soil Area Version: 28

Code	Soil Description	Acres	Percent of field	Non-Irr Class *c	Productivity Index
Z181A	Brandt silty clay loam, 0 to 2 percent slopes	121.66	26.3%	Is	86
Z160A	Moritz, occasionally flooded-Lamoure, frequently flooded, complex, 0 to 2 percent slopes	90.33	19.5%	IIIs	65
KrA	Kranzburg-Brookings silty clay loams, 0 to 2 percent slopes	56.59	12.2%	Is	93
DoB	Doland loam, 2 to 6 percent slopes	54.26	11.7%	IIe	82
Z159A	Divide loam, 0 to 2 percent slopes, occasionally flooded	46.29	10.0%	IIIs	54
Z158A	Marysland loam, 0 to 1 percent slopes, occasionally flooded	22.74	4.9%	IVw	32
VbB	Vienna-Brookings complex, 1 to 6 percent slopes	19.71	4.3%	IIe	86
Mt	Mckranz-Badger silty clay loams, 0 to 2 percent slopes	18.08	3.9%	IIIs	79
VaA	Venagro-Svea loams, 0 to 2 percent slopes	16.51	3.6%	Is	89
DsA	Doland-Svea loams, 0 to 2 percent slopes	6.76	1.5%	Is	88
Z153A	Lamoure-Rauville silty clay loams, channeled, 0 to 2 percent slopes, frequently flooded	4.10	0.9%	VIw	13
Bf	Brookings silty clay loam, 0 to 2 percent slopes	2.60	0.6%	Iw	96
Z185B	Egeland-Embsen complex, coteau, 2 to 6 percent slopes	2.17	0.5%	IIIe	54
KrB	Kranzburg-Brookings silty clay loams, 1 to 6 percent slopes	0.65	0.1%	IIe	87
SrA	Strayhoss loam, 0 to 2 percent slopes	0.29	0.1%	IIIs	77
Weighted Average					75.6

*c: Using Capabilities Class Dominant Condition Aggregation Method
 Soils data provided by USDA and NRCS.