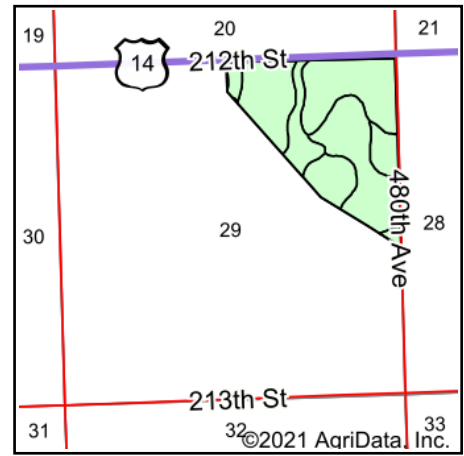
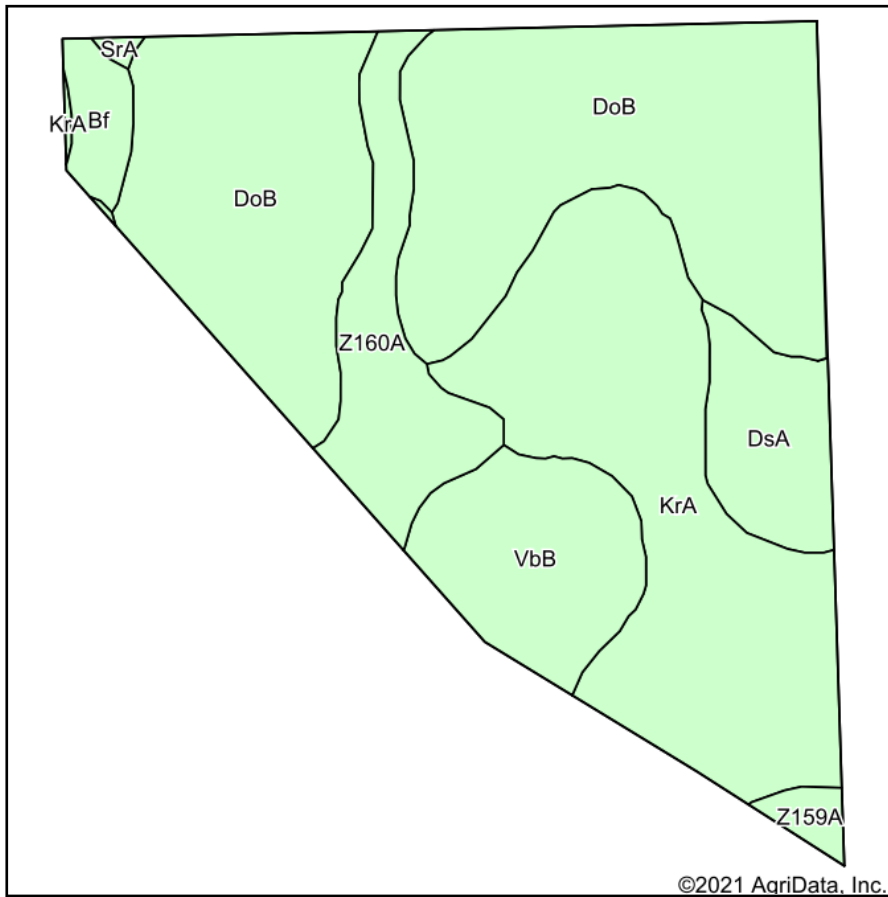


Soils Map



State: **South Dakota**
 County: **Brookings**
 Location: **29-110N-48W**
 Township: **Alton**
 Acres: **112.31**
 Date: **9/13/2021**

ADVANTAGE
Land Co.

Maps Provided By:

 CUSTOMIZED ONLINE MAPPING
 © AgriData, Inc. 2021 www.AgriDataInc.com



Area Symbol: SD011, Soil Area Version: 28

Code	Soil Description	Acres	Percent of field	Non-Irr Class *c	Productivity Index
DoB	Doland loam, 2 to 6 percent slopes	50.23	44.7%	Ile	82
KrA	Kranzburg-Brookings silty clay loams, 0 to 2 percent slopes	30.83	27.5%	Is	93
VbB	Vienna-Brookings complex, 1 to 6 percent slopes	10.79	9.6%	Ile	86
Z160A	Moritz, occasionally flooded-Lamoure, frequently flooded, complex, 0 to 2 percent slopes	9.84	8.8%	IIs	65
DsA	Doland-Svea loams, 0 to 2 percent slopes	6.72	6.0%	Is	88
Bf	Brookings silty clay loam, 0 to 2 percent slopes	2.50	2.2%	Iw	96
Z159A	Divide loam, 0 to 2 percent slopes, occasionally flooded	1.14	1.0%	IIIs	54
SrA	Strayhoss loam, 0 to 2 percent slopes	0.26	0.2%	IIs	77
Weighted Average					84.3

*c: Using Capabilities Class Dominant Condition Aggregation Method
 Soils data provided by USDA and NRCS.