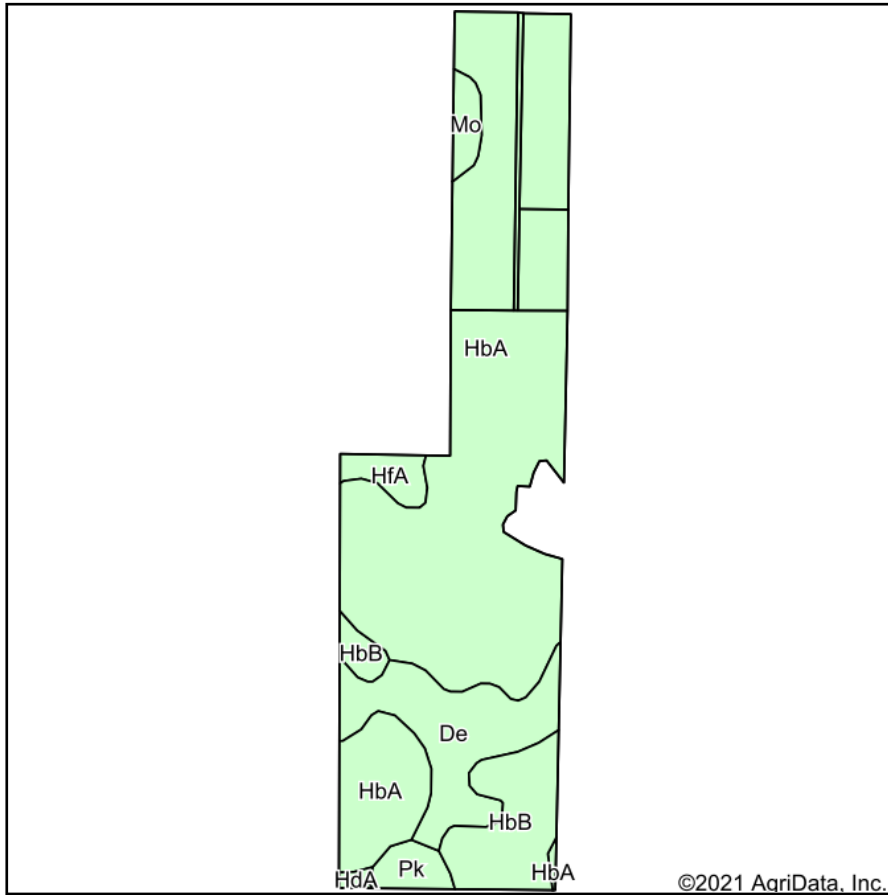
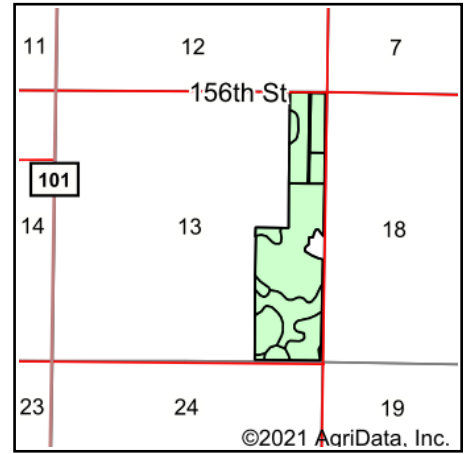


# Soils Map



Soils data provided by USDA and NRCS.



State: **South Dakota**  
 County: **Potter**  
 Location: **13-119N-75W**  
 Township: **East Potter**  
 Acres: **117.31**  
 Date: **9/10/2021**

**ADVANTAGE**  
*Land Co.*

Maps Provided By:  
  
 CUSTOMIZED ONLINE MAPPING  
 © AgriData, Inc. 2021 www.AgriDataInc.com



Area Symbol: SD107, Soil Area Version: 24

Code	Soil Description	Acres	Percent of field	Non-Irr Class *c	Productivity Index
HbA	Highmore silt loam, 0 to 2 percent slopes	82.77	70.6%	IIc	92
De	DeGrey silt loam	15.13	12.9%	IVs	44
HbB	Highmore silt loam, 2 to 6 percent slopes	11.71	10.0%	IIe	91
HfA	Highmore-Mobridge silt loams, 0 to 2 percent slopes	2.62	2.2%	IIc	87
Pk	Plankinton silt loam	2.54	2.2%	IVw	51
Mo	Mobridge silt loam, 0 to 2 percent slopes	2.08	1.8%	IIc	94
HdA	Highmore-DeGrey silt loams, 0 to 2 percent slopes	0.46	0.4%	IIc	76
Weighted Average					84.7

\*c: Using Capabilities Class Dominant Condition Aggregation Method  
 Soils data provided by USDA and NRCS.