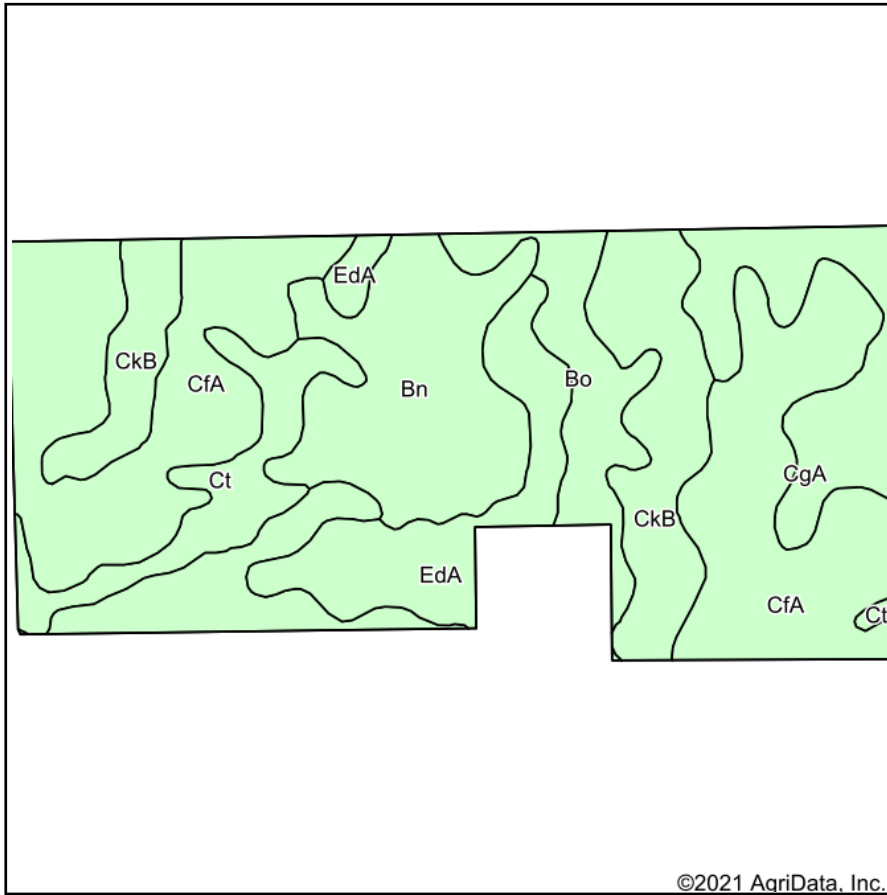
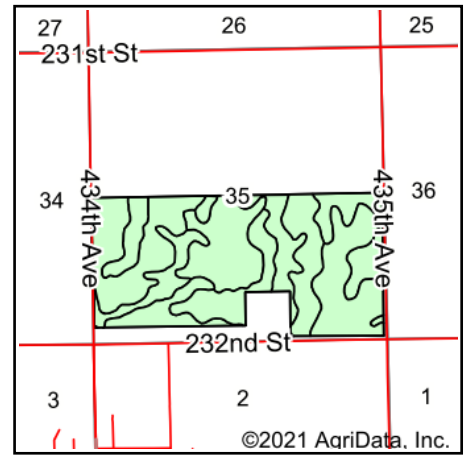


Soils Map



Soils data provided by USDA and NRCS.



State: **South Dakota**
 County: **Miner**
 Location: **35-107N-56W**
 Township: **Adams**
 Acres: **279.25**
 Date: **7/23/2021**

ADVANTAGE
Land Co.

Maps Provided By:



Area Symbol: SD097, Soil Area Version: 22

Code	Soil Description	Acres	Percent of field	Non-Irr Class *c	Productivity Index
CfA	Clarno-Bonilla loams, 0 to 2 percent slopes	112.24	40.2%	IIc	88
Bn	Bon loam, 0 to 2 percent slopes, rarely flooded	40.57	14.5%	IIc	84
CkB	Clarno-Ethan-Bonilla loams, 1 to 6 percent slopes	38.08	13.6%	Ile	78
EdA	Delmont-Enet loams, 0 to 2 percent slopes	26.88	9.6%	IVs	50
CgA	Clarno-Crossplain complex, 0 to 2 percent slopes	24.43	8.7%	IIc	82
Ct	Crossplain-Tetonka complex	18.60	6.7%	IIw	72
Bo	Bon loam, channeled, 0 to 2 percent slopes, frequently flooded	18.45	6.6%	VIw	34
Weighted Average					77.2

*c: Using Capabilities Class Dominant Condition Aggregation Method
 Soils data provided by USDA and NRCS.