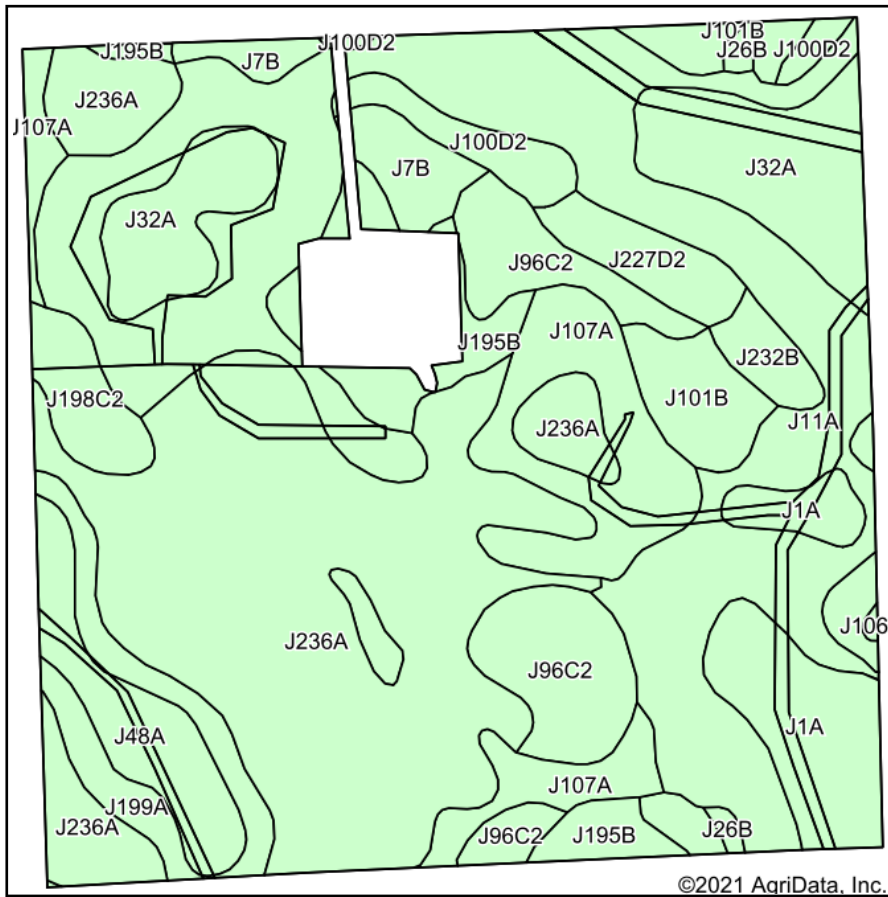
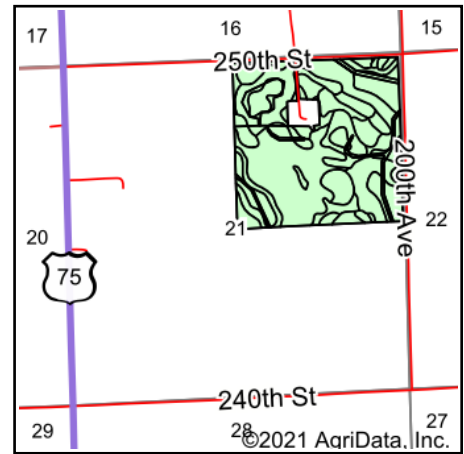


Soils Map



Soils data provided by USDA and NRCS.



State: **Minnesota**
 County: **Lincoln**
 Location: **21-111N-45W**
 Township: **Ash Lake**
 Acres: **147.4**
 Date: **6/14/2021**

ADVANTAGE
Land Co.

Maps Provided By:

 CUSTOMIZED ONLINE MAPPING
 © AgriData, Inc. 2021 www.AgriDataInc.com



Area Symbol: MN081, Soil Area Version: 19

Code	Soil Description	Acres	Percent of field	Non-Irr Class *c	Productivity Index
J236A	Highpoint Lake silty clay, 0 to 2 percent slopes	40.19	27.3%	IIs	90
J11A	Vallers clay loam, 0 to 2 percent slopes	35.84	24.3%	IIw	90
J32A	Bigstone silty clay loam, depressional, 0 to 1 percent slopes	10.91	7.4%	IIIw	77
J96C2	Barnes-Buse complex, 6 to 12 percent slopes, moderately eroded	10.72	7.3%	IIIe	80
J107A	Lakepark-Roliss-Parnell, depressional, complex, 0 to 3 percent slopes	10.69	7.3%	IIw	93
J1A	Parnell silty clay loam, depressional, 0 to 1 percent slopes	7.18	4.9%	IIIw	86
J199A	Fulda silty clay, 0 to 2 percent slopes	5.22	3.5%	IIw	86
J48A	Southam silty clay loam, 0 to 1 percent slopes	4.90	3.3%	VIIIw	5
J195B	Poinsett-Waubay silty clay loams, 1 to 6 percent slopes	4.58	3.1%	Ile	93
J101B	Hokans-Svea complex, 1 to 4 percent slopes	3.52	2.4%	Ile	98
J198C2	Rusklyn-Poinsett complex, 6 to 12 percent slopes, moderately eroded	3.32	2.3%	IIIe	78
J7B	Sverdrup sandy loam, 2 to 6 percent slopes	2.97	2.0%	IIIe	49
J100D2	Buse, eroded-Wilno complex, 12 to 18 percent slopes	2.65	1.8%	IVe	64
J227D2	Buse, moderately eroded-Sandberg complex, 12 to 18 percent slopes	2.63	1.8%	IVe	51
J232B	Barnes-Buse-Arvilla complex, 2 to 6 percent slopes	1.50	1.0%	Ile	74
J26B	Darnen loam, 2 to 6 percent slopes	0.50	0.3%	Ile	99
J106B	Barnes-Buse-Svea complex, 1 to 6 percent slopes	0.08	0.1%	Ile	88
Weighted Average					83.3

*c: Using Capabilities Class Dominant Condition Aggregation Method
 Soils data provided by USDA and NRCS.