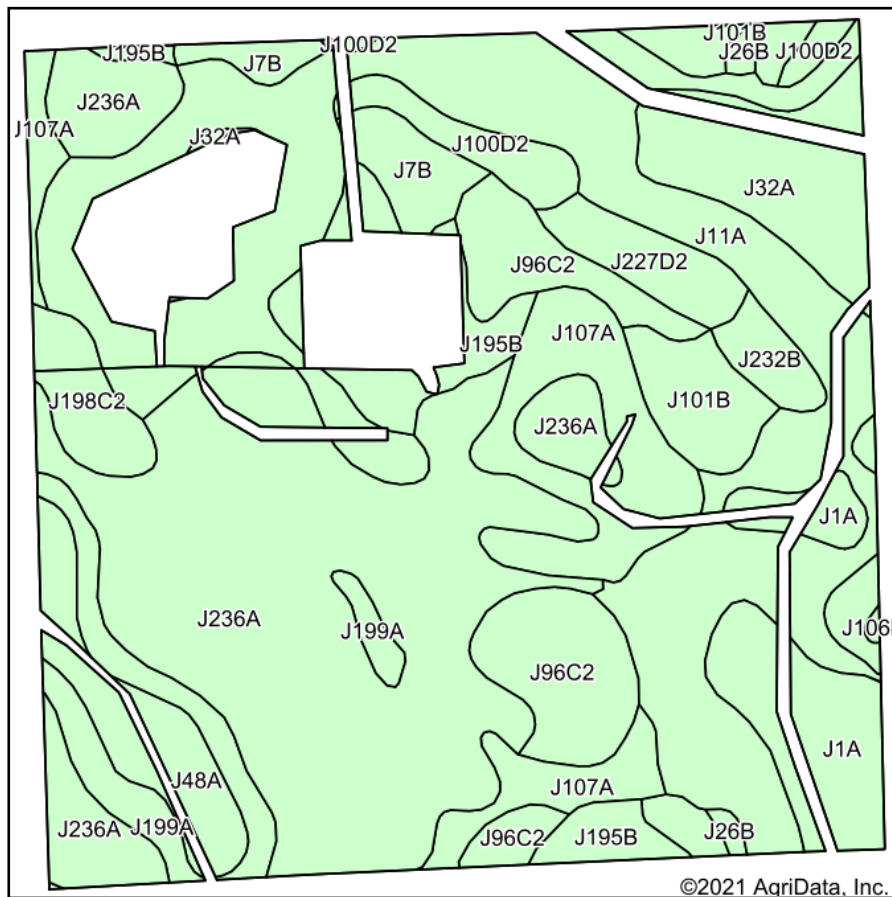
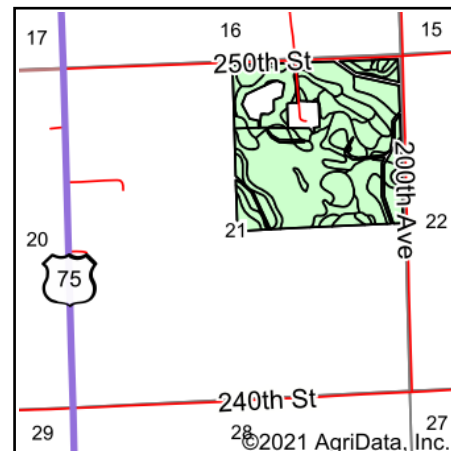


Soils Map



Soils data provided by USDA and NRCS.



State: **Minnesota**
 County: **Lincoln**
 Location: **21-111N-45W**
 Township: **Ash Lake**
 Acres: **136.94**
 Date: **6/14/2021**

ADVANTAGE
Land Co.

Maps Provided By:

 CUSTOMIZED ONLINE MAPPING
 © AgriData, Inc. 2021 www.AgriDataInc.com



Area Symbol: MN081, Soil Area Version: 19

Code	Soil Description	Acres	Percent of field	Non-Irr Class *c	Productivity Index
J236A	Highpoint Lake silty clay, 0 to 2 percent slopes	39.72	29.0%	IIs	90
J11A	Vallers clay loam, 0 to 2 percent slopes	32.81	24.0%	IIw	90
J96C2	Barnes-Buse complex, 6 to 12 percent slopes, moderately eroded	10.72	7.8%	IIIe	80
J107A	Lakepark-Roliss-Parnell, depressional, complex, 0 to 3 percent slopes	10.31	7.5%	IIw	93
J1A	Parnell silty clay loam, depressional, 0 to 1 percent slopes	6.16	4.5%	IIIw	86
J32A	Bigstone silty clay loam, depressional, 0 to 1 percent slopes	5.98	4.4%	IIIw	77
J199A	Fulda silty clay, 0 to 2 percent slopes	5.21	3.8%	IIw	86
J195B	Poinsett-Waubay silty clay loams, 1 to 6 percent slopes	4.57	3.3%	IIe	93
J48A	Southam silty clay loam, 0 to 1 percent slopes	4.29	3.1%	VIIIw	5
J101B	Hokans-Svea complex, 1 to 4 percent slopes	3.52	2.6%	IIe	98
J198C2	Rusklyn-Poinsett complex, 6 to 12 percent slopes, moderately eroded	3.32	2.4%	IIIe	78
J7B	Sverdrup sandy loam, 2 to 6 percent slopes	2.97	2.2%	IIIe	49
J100D2	Buse, eroded-Wilno complex, 12 to 18 percent slopes	2.65	1.9%	IVe	64
J227D2	Buse, moderately eroded-Sandberg complex, 12 to 18 percent slopes	2.63	1.9%	IVe	51
J232B	Barnes-Buse-Arvilla complex, 2 to 6 percent slopes	1.50	1.1%	IIe	74
J26B	Darnen loam, 2 to 6 percent slopes	0.50	0.4%	IIe	99
J106B	Barnes-Buse-Svea complex, 1 to 6 percent slopes	0.08	0.1%	IIe	88
Weighted Average					83.6

*c: Using Capabilities Class Dominant Condition Aggregation Method
 Soils data provided by USDA and NRCS.