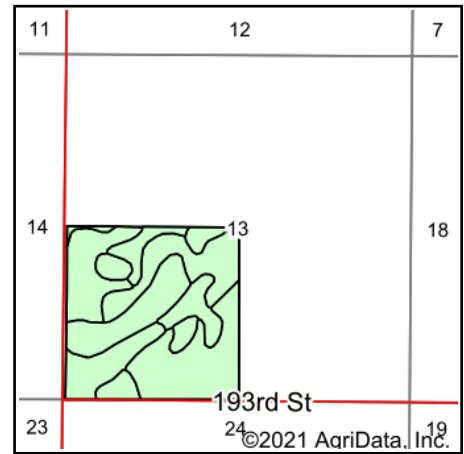
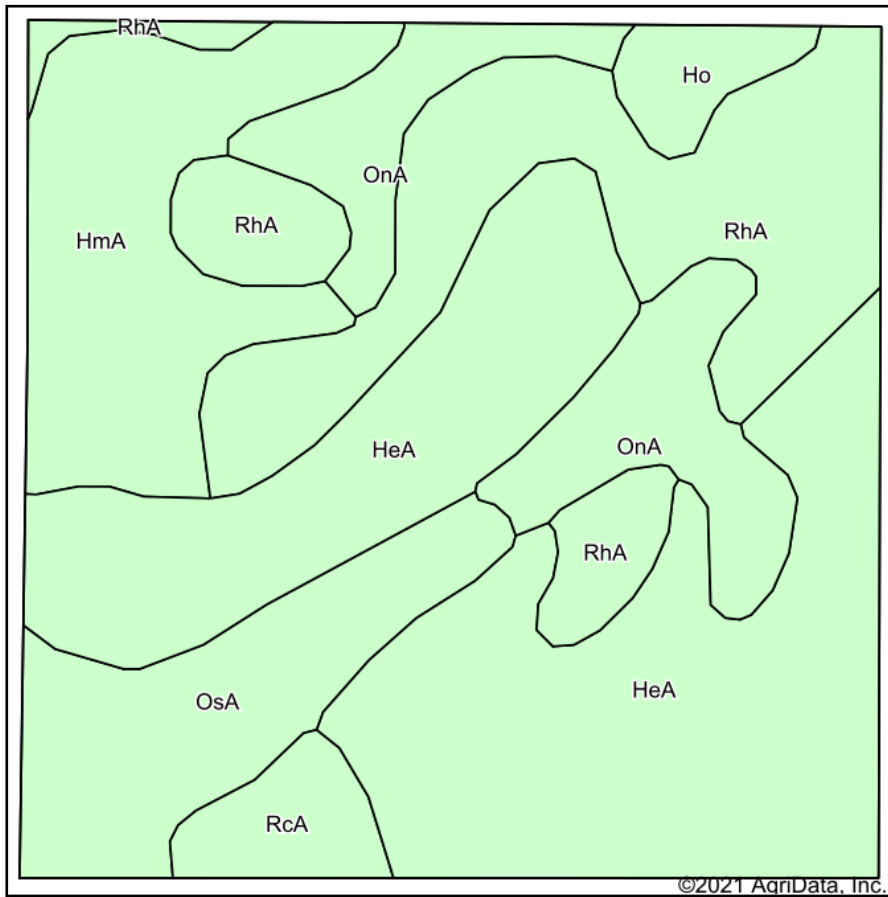


Soils Map



State: **South Dakota**
 County: **Sully**
 Location: **13-113N-76W**
 Township: **East Sully**
 Acres: **158.89**
 Date: **6/29/2021**

ADVANTAGE
Land Co.

Maps Provided By:



Area Symbol: SD119, Soil Area Version: 23

Code	Soil Description	Acres	Percent of field	Non-Irr Class *c	Productivity Index
HeA	Highmore silt loam, 0 to 2 percent slopes	61.47	38.7%	IIc	92
RhA	Eakin-Raber complex, 0 to 2 percent slopes	34.23	21.5%	IIc	83
HmA	Highmore-Walke silt loams, 0 to 2 percent slopes	21.69	13.7%	IIc	85
OnA	Mobridge silt loam, 0 to 2 percent slopes	16.78	10.6%	IIc	94
OsA	Onita-Hoven silt loams, 0 to 1 percent slopes	16.53	10.4%	IIc	59
RcA	Raber-Cavo loams, 0 to 2 percent slopes	4.65	2.9%	IIc	60
Ho	Hoven silt loam, 0 to 1 percent slopes	3.54	2.2%	VIc	15
Weighted Average					83.2

*c: Using Capabilities Class Dominant Condition Aggregation Method
 Soils data provided by USDA and NRCS.