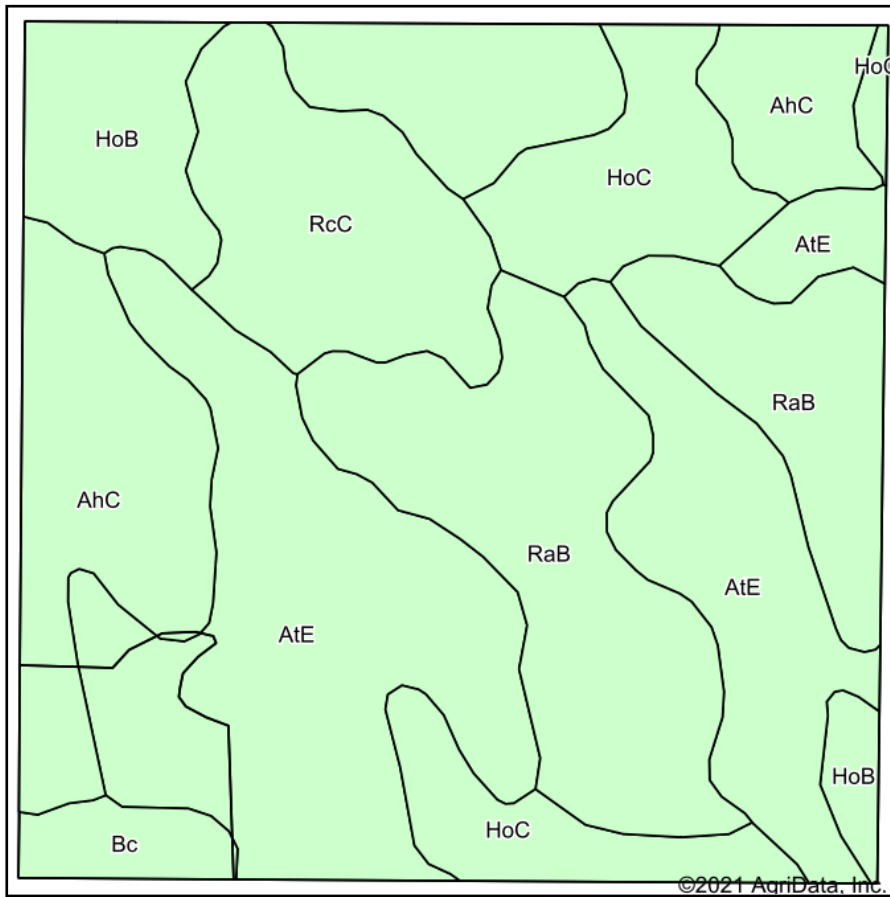
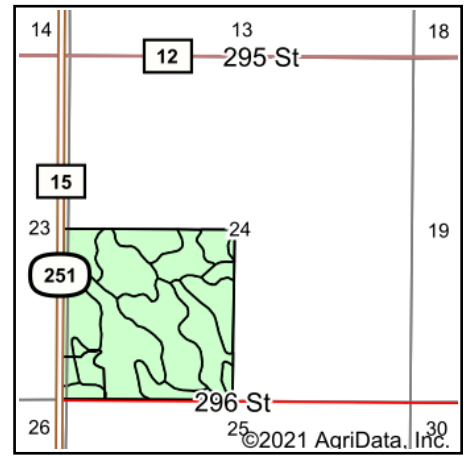


Soils Map



Soils data provided by USDA and NRCS.



State: **South Dakota**
 County: **Gregory**
 Location: **24-96N-73W**
 Township: **Dickens**
 Acres: **154.84**
 Date: **6/29/2021**

ADVANTAGE
Land Co.

Maps Provided By:

 CUSTOMIZED ONLINE MAPPING
 © AgriData, Inc. 2021 www.AgriDataInc.com



Area Symbol: SD053, Soil Area Version: 22

Code	Soil Description	Acres	Percent of field	Non-Irr Class *c	Irr Class *c	Productivity Index
AtE	Anselmo-Tassel fine sandy loams, 6 to 25 percent slopes	48.25	31.2%	Vle		13
RaB	Ree loam, 3 to 6 percent slopes	32.97	21.3%	Ile	Ile	79
AhC	Anselmo-Holt fine sandy loams, 6 to 9 percent slopes	20.42	13.2%	IVe		42
HoB	Holt fine sandy loam, 3 to 6 percent slopes	18.43	11.9%	IIIe	IIIe	53
HoC	Holt fine sandy loam, 6 to 9 percent slopes	16.49	10.6%	IVe	IVe	45
RcC	Ree-Tassel complex, 3 to 9 percent slopes	15.12	9.8%	IIIe		50
Bc	Bon loam, channeled, 0 to 2 percent slopes, frequently flooded	3.16	2.0%	VIw		34
Weighted Average						43.1

*c: Using Capabilities Class Dominant Condition Aggregation Method
 Soils data provided by USDA and NRCS.