

Certified Wetland Determination

Field Office: Sioux Falls FO

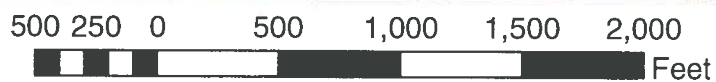
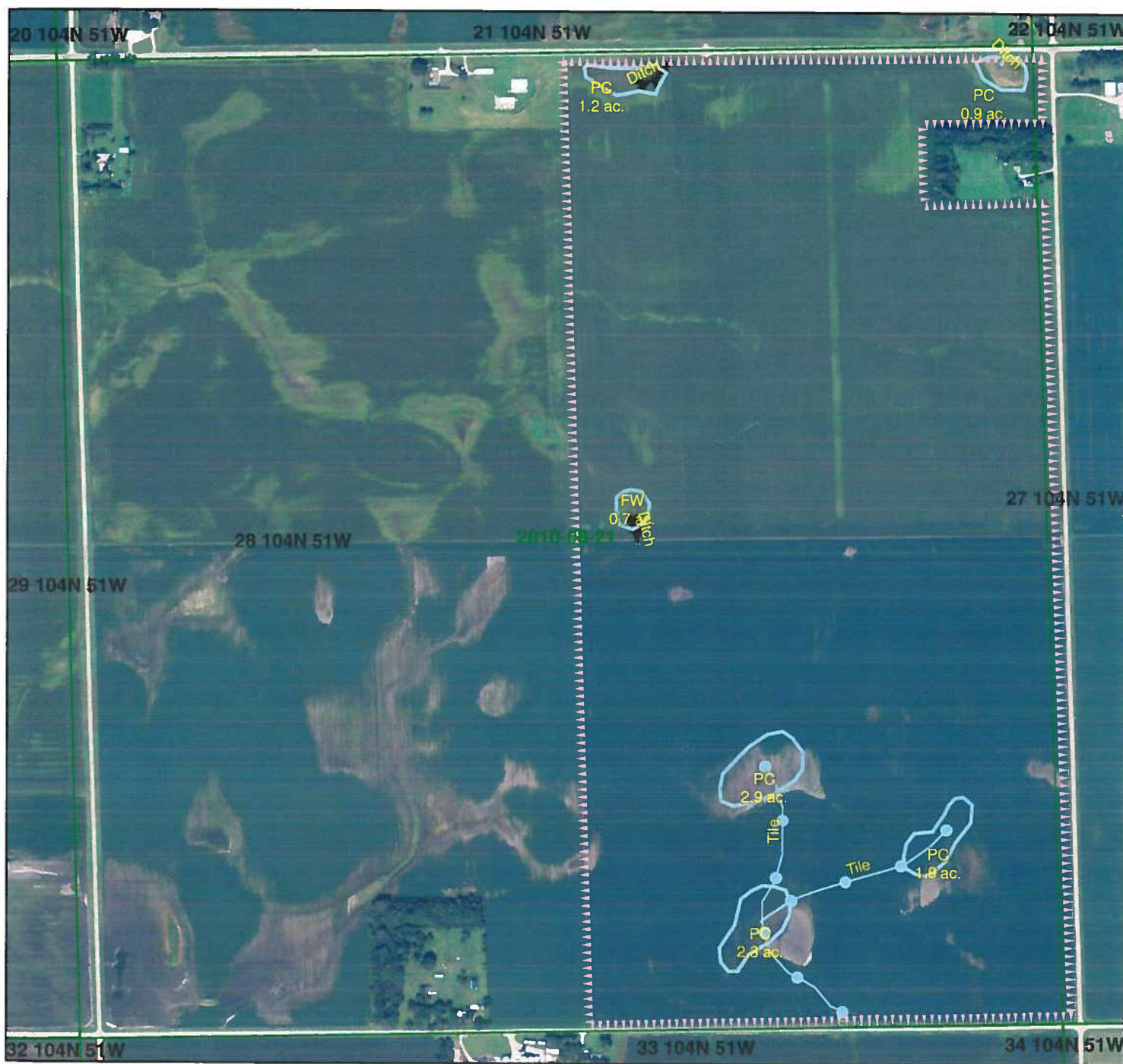
Certified By: C. Veldkamp

Legal Desc: S 28, T 104N, R 51W

Agency: USDA-NRCS

Certified Date: 1/18/2012

Tract: 2993



Legend



W Wetland
FW Farmed Wetland Drained or modified & cropped prior to 12-23-1985, but still meets wetland criteria
PC Prior Converted
NW Non Wetland
NI Not Inventoried Potential Waters of the US
See NRCS CPA-Q26E for definitions and additional info.



HIGHLY ERODIBLE LAND AND WETLAND CONSERVATION DETERMINATION

Name Address:	Wolles Farms Inc. 47028 245th ST Dell Rapids, SD 57022	Request Date:	10/18/11	County:	Minnehaha
Agency or Person Requesting Determination:	Farm Service Agency	Tract No:	2993	FSA Farm No.:	2164

Section I - Highly Erodible Land

(Y/N)

[illegible]

The Highly Erodible Land determination was completed in the

Section II - Wetlands

Are there hydric soils on this farm?				Y	
Fields in this section have had wetland determinations completed. See the Definition of Wetland Label Codes for additional information regarding allowable activities under the wetland conservation provisions of the Food Security Act and/or when wetland determinations are necessary to determine USDA program eligibility.					
<u>Field(s)</u>	<u>Wetland Label*</u>	<u>Occurrence Year (CW)**</u>	<u>Approximate Acres</u>	<u>Determination Date</u>	<u>Certification Date</u>
	FW		0.7	11/16/11	1/18/12
	NW		294.4	11/16/11	1/18/12
	PC		8.7	11/16/11	1/18/12
The wetland determination was completed in the			Field	It was mailed to the person on	1/18/2012
Remarks:					

I certify that the above determinations are correct and were conducted in accordance with policies and procedures contained in the National Food Security Act Manual.

Signature	Designated Conservationist	Date
		1/18/2012

The U.S. Department of Agriculture (USDA) prohibits discrimination in all its programs and activities on the basis of race, color, national origin, gender, religion, age, disability, political beliefs, sexual orientation, and marital or family status. (Not all prohibited bases apply to all programs.) Persons with disabilities who require alternative means for communication of program information (Braille, large print, audiotape, etc.) should contact USDA's TARGET Center at 202-720-2600 (voice and TDD).

To file a complaint of discrimination, write USDA, Director, Office of Civil Rights, Room 326W, Whitten Building, 14th and Independence Avenue, SW, Washington, DC 20250-9410 or call (202) 720-5964 (voice or TDD). USDA is an equal opportunity provider and employer.