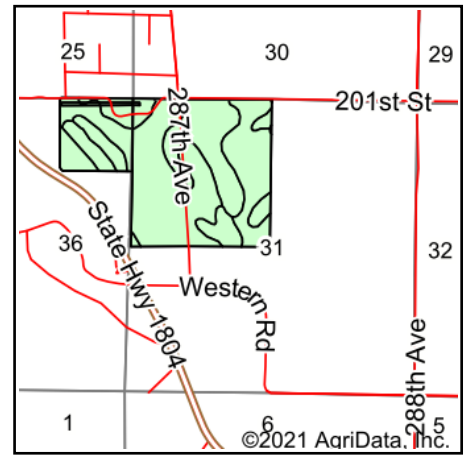
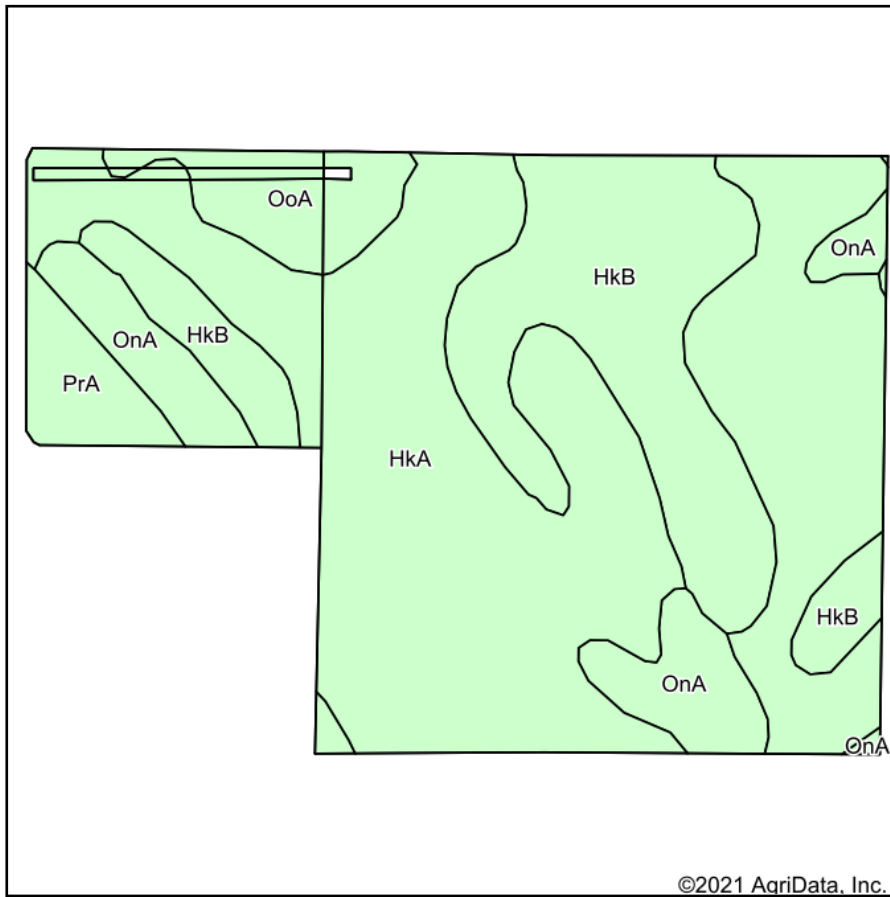


# Soils Map



State: **South Dakota**  
 County: **Hughes**  
 Location: **31-112N-79W**  
 Township: **West Hughes**  
 Acres: **190.63**  
 Date: **5/12/2021**

**ADVANTAGE**  
*Land Co.*

Maps Provided By:



Area Symbol: SD065, Soil Area Version: 25

Code	Soil Description	Acres	Percent of field	Non-Irr Class *c	Irr Class *c	Productivity Index
HkA	Highmore silt loam, 0 to 2 percent slopes	111.18	58.3%	IIc		92
HkB	Highmore silt loam, 2 to 6 percent slopes	45.53	23.9%	Ile		91
OnA	Mobridge silt loam, 0 to 2 percent slopes	17.23	9.0%	IIc		94
OoA	Onita-Hoven silt loams, 0 to 1 percent slopes	9.90	5.2%	IIc		75
PrA	Promise clay, 0 to 3 percent slopes	6.79	3.6%	IIIs	IIIs	68
<b>Weighted Average</b>						<b>90.2</b>

\*c: Using Capabilities Class Dominant Condition Aggregation Method  
 Soils data provided by USDA and NRCS.