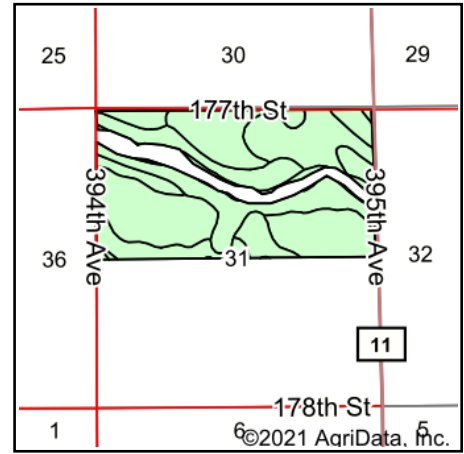
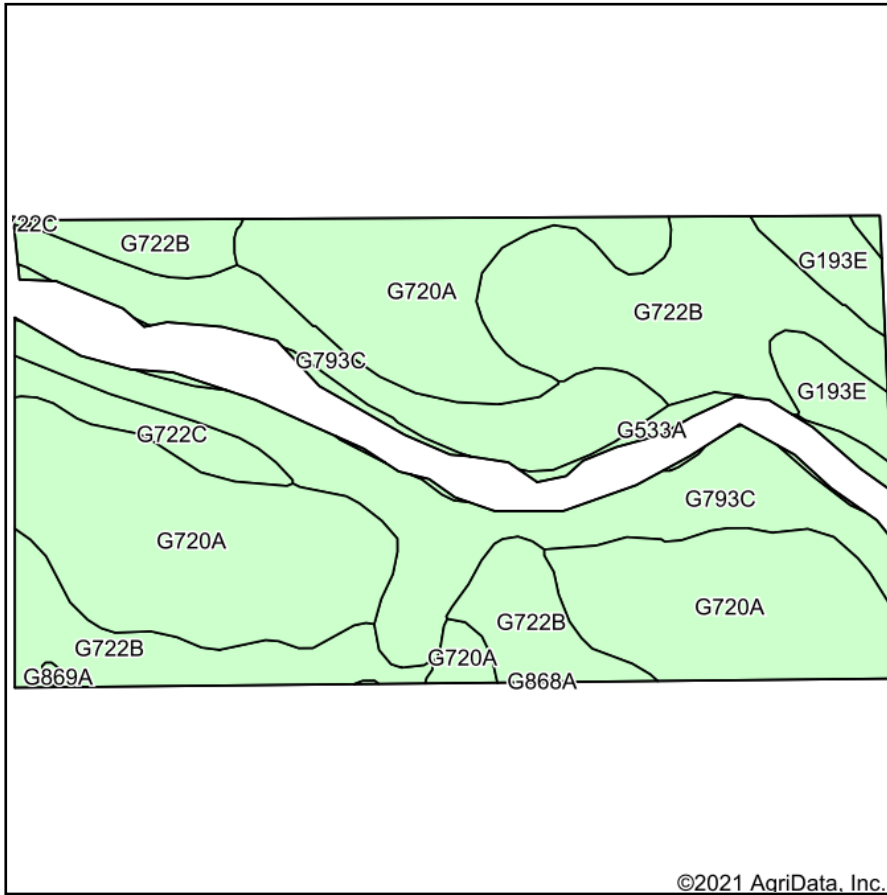


Soils Map



State: **South Dakota**
 County: **Spink**
 Location: **31-116N-62W**
 Township: **Frankfort**
 Acres: **266.84**
 Date: **5/5/2021**

ADVANTAGE
Land Co.

Maps Provided By:

 © AgriData, Inc. 2021 www.AgriDataInc.com



Area Symbol: SD115, Soil Area Version: 21

Code	Soil Description	Acres	Percent of field	Non-Irr Class *c	Productivity Index
G720A	Great Bend-Beotia silt loams, 0 to 2 percent slopes	108.84	40.8%	IIc	95
G722B	Great Bend-Zell silt loams, 2 to 6 percent slopes	68.60	25.7%	IIe	77
G793C	Kranzburg-Zell-Aastad complex, 3 to 9 percent slopes	63.87	23.9%	IIIe	72
G193E	Buse-Vida, moist-Forman loams, 9 to 25 percent slopes	11.84	4.4%	VIe	29
G722C	Great Bend-Zell silt loams, 6 to 9 percent slopes	7.41	2.8%	IIIe	66
G533A	Lamoure silty clay loam, somewhat poorly drained, 0 to 1 percent slopes, frequently flooded	5.82	2.2%	IIIw	57
G869A	Winship-Tonka silt loams, till substratum, 0 to 1 percent slopes	0.40	0.1%	IIw	71
G868A	Winship-Tonka silt loams, 0 to 1 percent slopes	0.06	0.0%	IIw	71
Weighted Average					80.3

*c: Using Capabilities Class Dominant Condition Aggregation Method
 Soils data provided by USDA and NRCS.