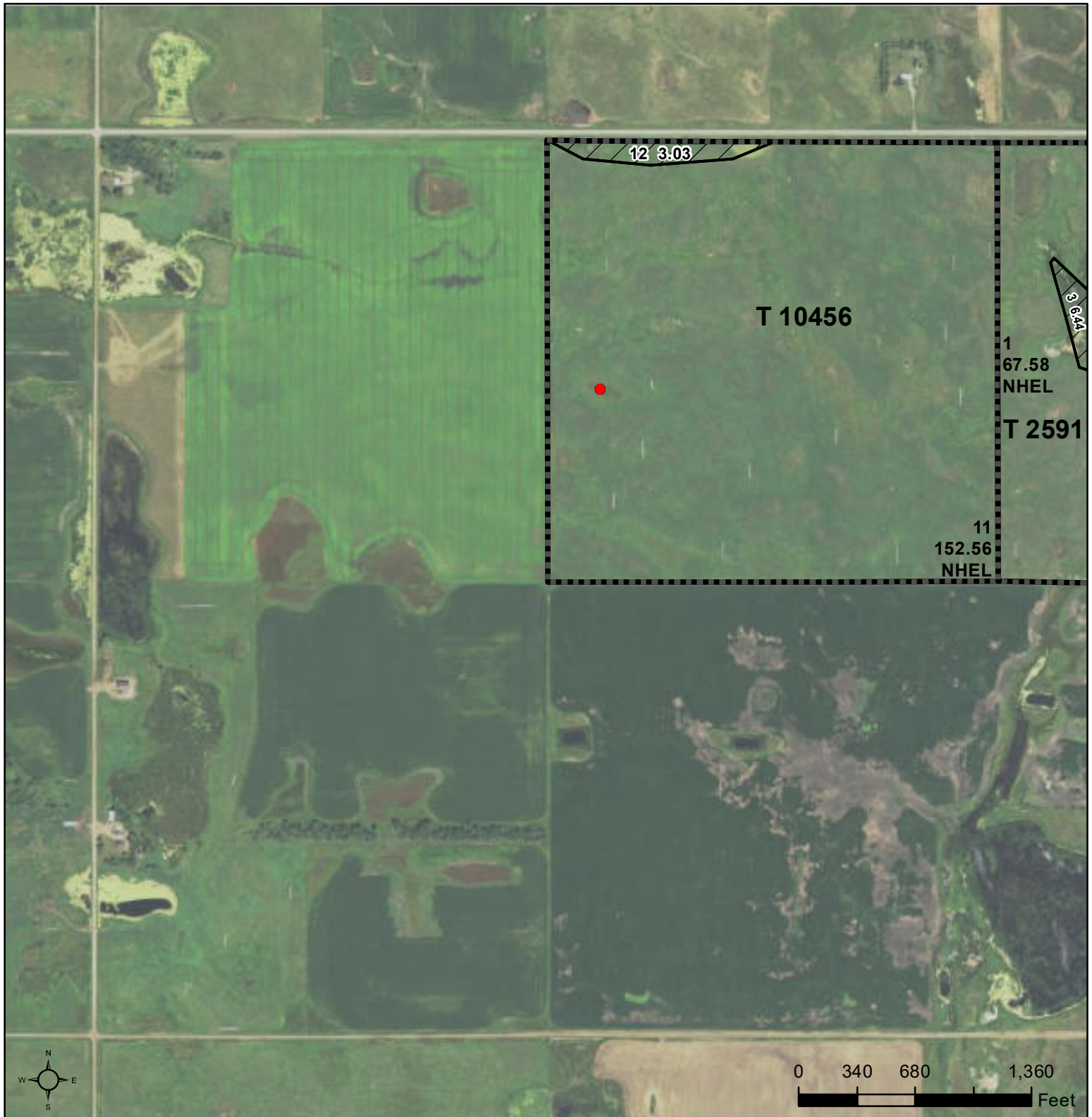








United States
Department of
Agriculture

Beadle County, South Dakota



Common Land Unit  Tract Boundary
 Non-Cropland
 Cropland

Wetland Determination Identifiers

-  Restricted Use
-  Limited Restrictions
-  Exempt from Conservation
-  Compliance Provisions

***UNLESS OTHERWISE NOTED:
- ALL FIELDS ARE NON-IRRIGATED
- ALL CROPS ARE FOR GRAIN

_____ INITIALS

2021 Program Year

Map Created April 02, 2021

Farm **5792**

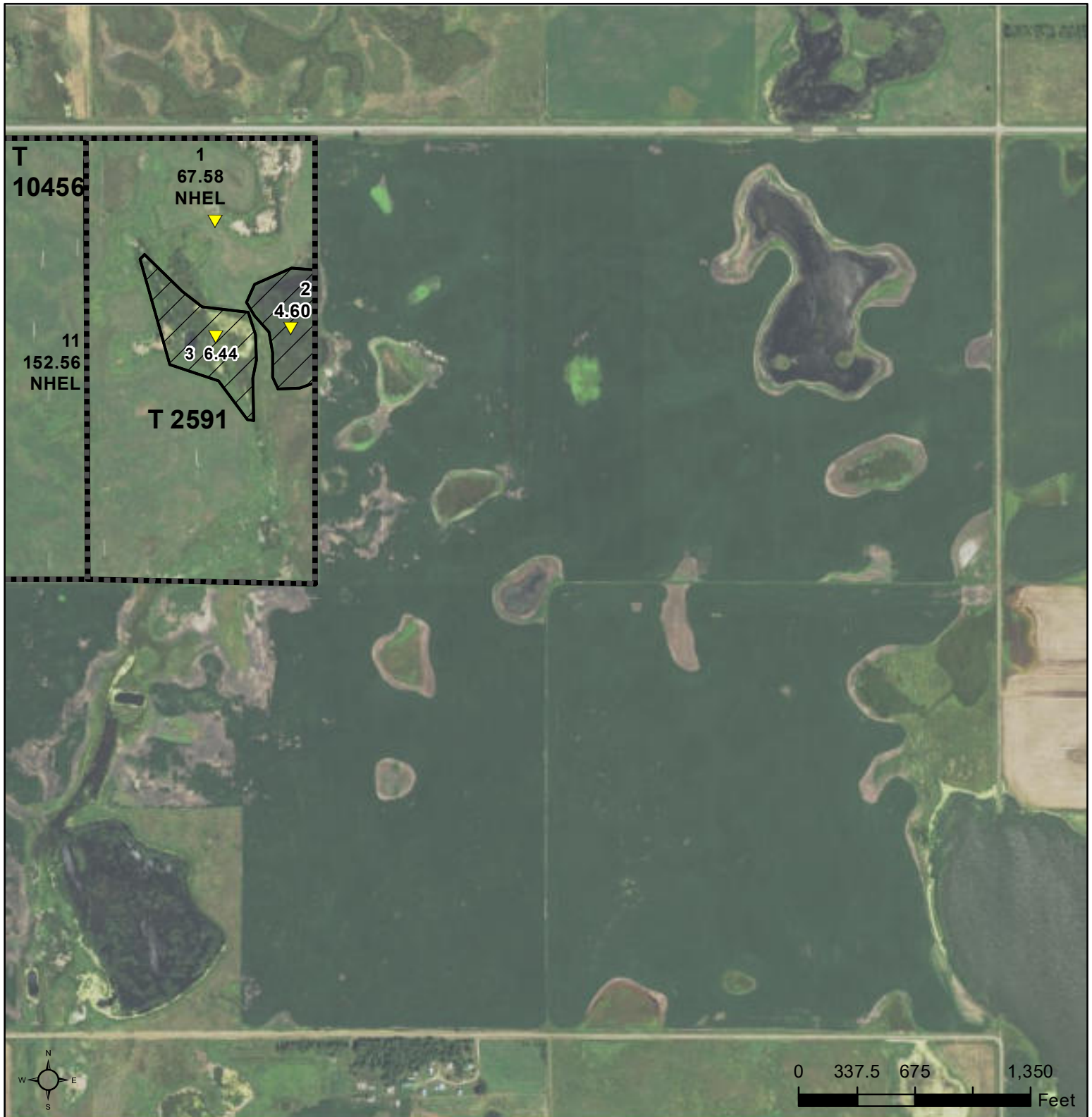
21-111N-65W-Beadle

United States Department of Agriculture (USDA) Farm Service Agency (FSA) maps are for FSA Program administration only. This map does not represent a legal survey or reflect actual ownership; rather it depicts the information provided directly from the producer and/or National Agricultural Imagery Program (NAIP) imagery. The producer accepts the data 'as is' and assumes all risks associated with its use. USDA-FSA assumes no responsibility for actual or consequential damage incurred as a result of any user's reliance on this data outside FSA Programs. Wetland identifiers do not represent the size, shape, or specific determination of the area. Refer to your original determination (CPA-026 and attached maps) for exact boundaries and determinations or contact USDA Natural Resources Conservation Service (NRCS).







United States
Department of
Agriculture

Beadle County, South Dakota



Common Land Unit  Tract Boundary
 Non-Cropland
 Cropland
 PLSS

Wetland Determination Identifiers

-  Restricted Use
-  Limited Restrictions
-  Exempt from Conservation
-  Compliance Provisions

***UNLESS OTHERWISE NOTED:
- ALL FIELDS ARE NON-IRRIGATED
- ALL CROPS ARE FOR GRAIN

INITIALS

2021 Program Year

Map Created April 02, 2021

Farm **5792**

22-111N-65W-Beadle

United States Department of Agriculture (USDA) Farm Service Agency (FSA) maps are for FSA Program administration only. This map does not represent a legal survey or reflect actual ownership; rather it depicts the information provided directly from the producer and/or National Agricultural Imagery Program (NAIP) imagery. The producer accepts the data 'as is' and assumes all risks associated with its use. USDA-FSA assumes no responsibility for actual or consequential damage incurred as a result of any user's reliance on this data outside FSA Programs. Wetland identifiers do not represent the size, shape, or specific determination of the area. Refer to your original determination (CPA-026 and attached maps) for exact boundaries and determinations or contact USDA Natural Resources Conservation Service (NRCS).