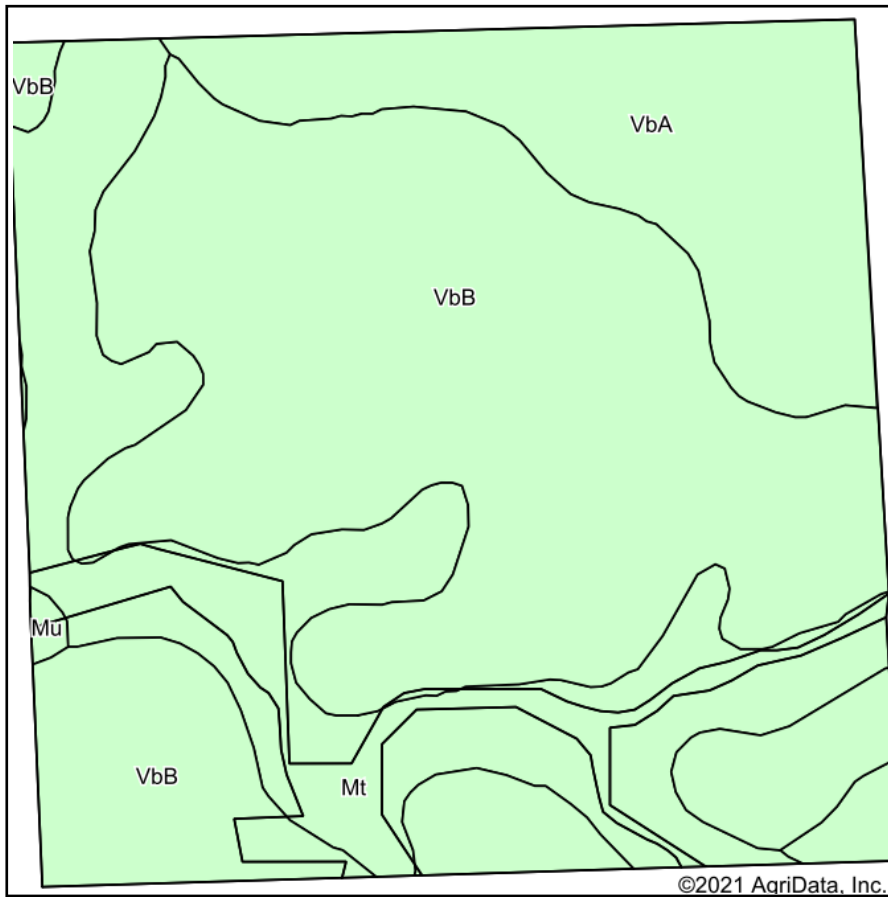
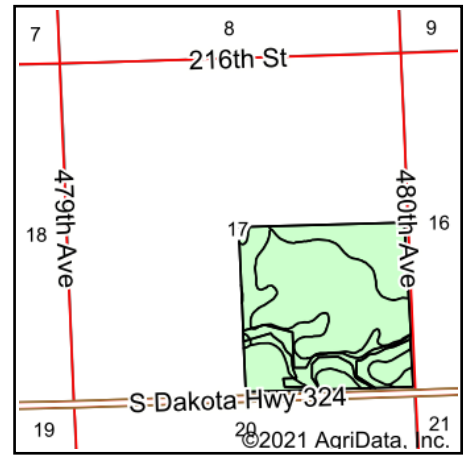


# Soils Map



Soils data provided by USDA and NRCS.



State: **South Dakota**  
 County: **Brookings**  
 Location: **17-109N-48W**  
 Township: **Parnell**  
 Acres: **150.47**  
 Date: **2/9/2021**

**ADVANTAGE**  
*Land Co.*

Maps Provided By:



Code	Soil Description	Acres	Percent of field	Non-Irr Class *c	Productivity Index
VbB	Vienna-Brookings complex, 1 to 6 percent slopes	87.18	57.9%	Ile	86
Mt	Mckranz-Badger silty clay loams, 0 to 2 percent slopes	35.90	23.9%	Ils	79
VbA	Vienna-Brookings complex, 0 to 2 percent slopes	26.95	17.9%	Is	90
Mu	McIntosh-Lamoure silty clay loams, 0 to 2 percent slopes	0.44	0.3%	Ils	80
<b>Weighted Average</b>					<b>85</b>

\*c: Using Capabilities Class Dominant Condition Aggregation Method  
 Soils data provided by USDA and NRCS.