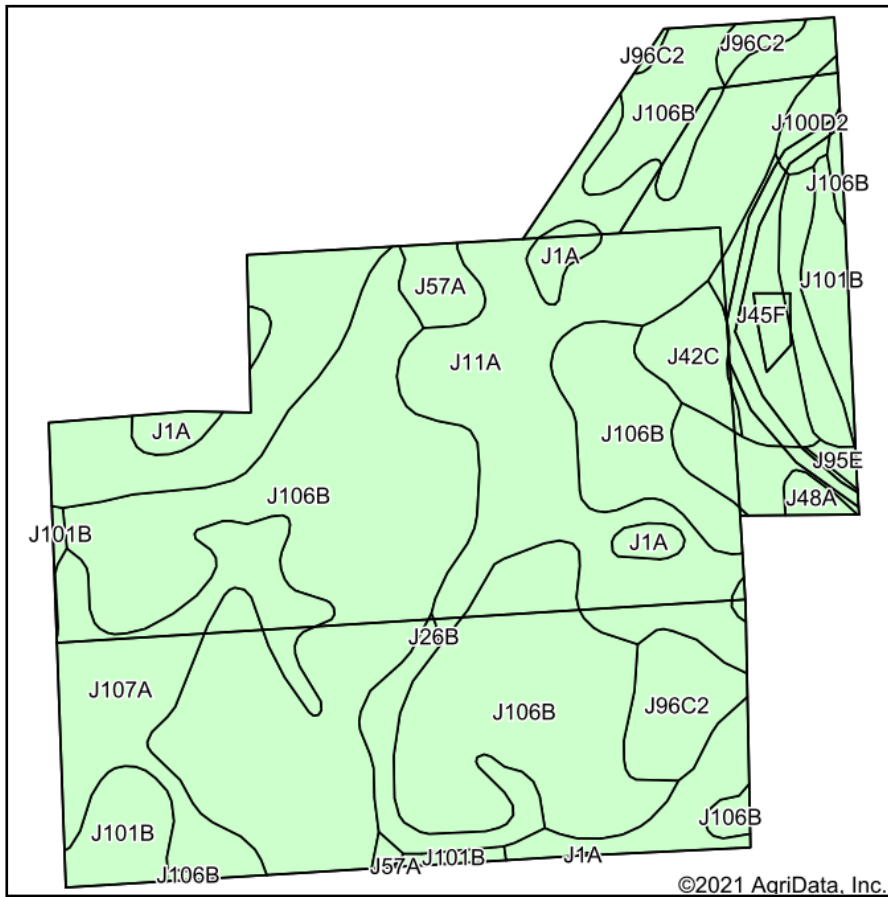
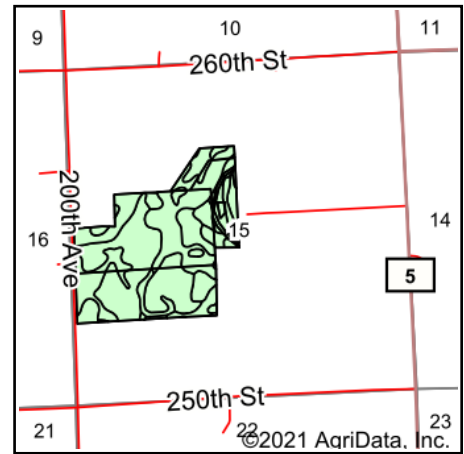


Soils Map



Soils data provided by USDA and NRCS.



State: **Minnesota**
 County: **Lincoln**
 Location: **15-111N-45W**
 Township: **Ash Lake**
 Acres: **112.38**
 Date: **1/20/2021**

ADVANTAGE
Land Co.

Maps Provided By:

 CUSTOMIZED ONLINE MAPPING
 © AgriData, Inc. 2021 www.AgriDataInc.com



Code	Soil Description	Acres	Percent of field	Non-Irr Class *c	Productivity Index
J106B	Barnes-Buse-Svea complex, 1 to 6 percent slopes	47.36	42.1%	Ile	88
J11A	Vallers clay loam, 0 to 2 percent slopes	32.45	28.9%	IIw	90
J107A	Lakepark-Roliss-Parnell, depressional, complex, 0 to 3 percent slopes	8.78	7.8%	IIw	93
J101B	Hokans-Svea complex, 1 to 4 percent slopes	4.66	4.1%	Ile	98
J42C	Sandberg-Arvilla complex, 6 to 12 percent slopes	3.91	3.5%	VIIs	38
J45F	Sandberg sandy loam, 12 to 40 percent slopes	3.72	3.3%	VIIe	20
J96C2	Barnes-Buse complex, 6 to 12 percent slopes, moderately eroded	3.68	3.3%	IIIe	80
J26B	Damen loam, 2 to 6 percent slopes	2.49	2.2%	Ile	99
J1A	Parnell silty clay loam, depressional, 0 to 1 percent slopes	2.15	1.9%	IIIw	86
J57A	Balaton loam, 1 to 3 percent slopes	1.29	1.1%	IIIs	96
J100D2	Buse, eroded-Wilno complex, 12 to 18 percent slopes	1.04	0.9%	IVe	64
J48A	Southam silty clay loam, 0 to 1 percent slopes	0.58	0.5%	VIIIw	5
J95E	Buse, stony-Wilno complex, 18 to 25 percent slopes	0.27	0.2%	VIe	26
Weighted Average					84.6

*c: Using Capabilities Class Dominant Condition Aggregation Method
 Soils data provided by USDA and NRCS.