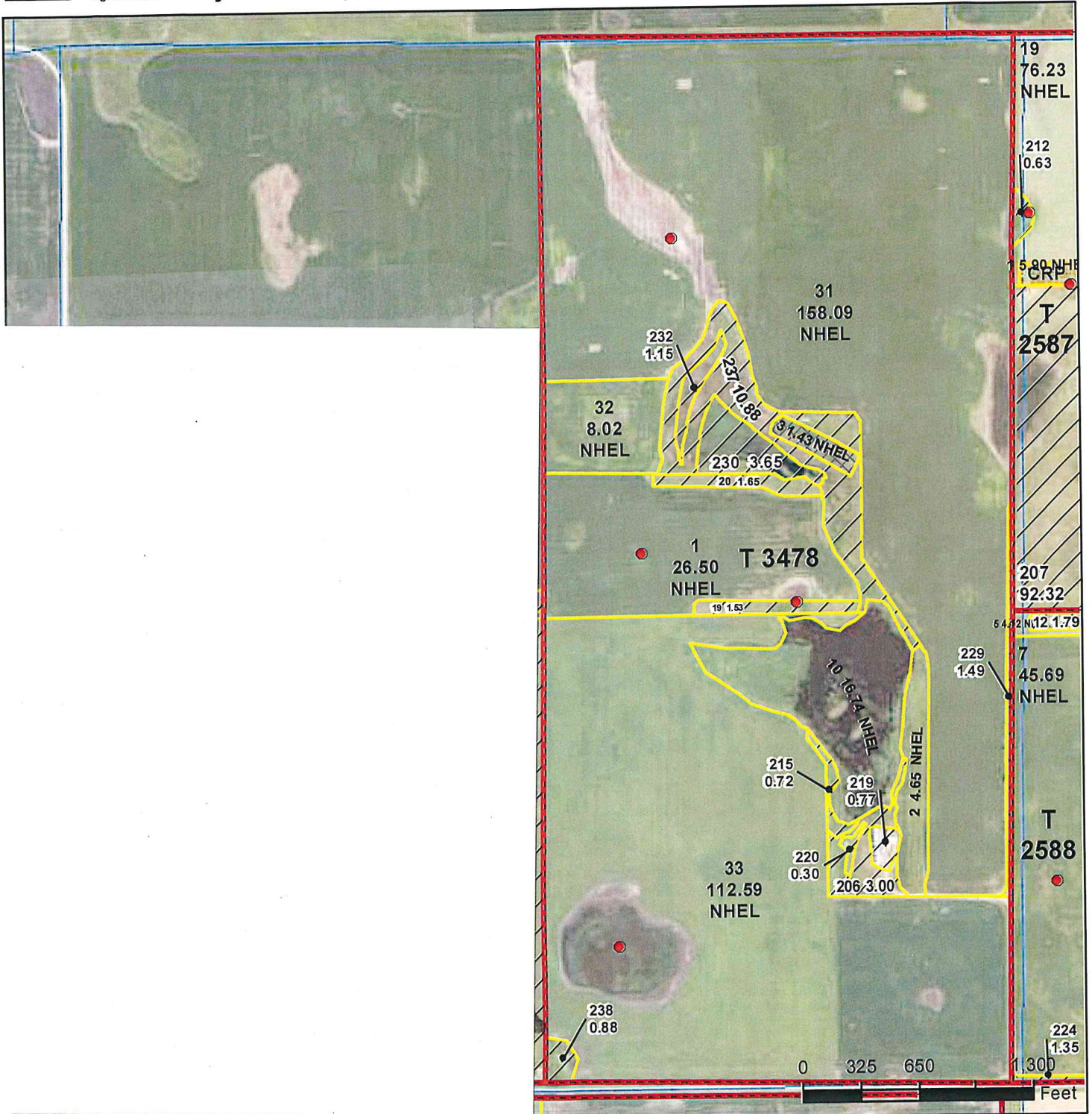




United States
Department of
Agriculture

Hyde County, South Dakota

T3



Common Land Unit

- Non-Cropland
- Cropland

- CRP
- native_sod_SD
- Tract Boundary

Wetland Determination Identifiers

- Restricted Use
- Limited Restrictions
- Exempt from Conservation
- Compliance Provisions

PL33

Unless otherwise noted, crops listed below are:

Non-irrigated

Intended for Grain

Corn = Yellow

Soybeans = Common

Wheat - HRS or HRW

Sunflowers = Oil or Non

Producer initial _____

Date _____

2024 Program Year

Map Created January 03, 2024

Farm 1609

3-116N-72W-Hyde

United States Department of Agriculture (USDA) Farm Service Agency (FSA) maps are for FSA Program administration only. This map does not represent a legal survey or reflect actual ownership; rather it depicts the information provided directly from the producer and/or National Agricultural Imagery Program (NAIP) imagery. The producer accepts the data 'as is' and assumes all risks associated with its use. USDA-FSA assumes no responsibility for actual or consequential damage incurred as a result of any user's reliance on this data outside FSA Programs. Wetland identifiers do not represent the size, shape, or specific determination of the area. Refer to your original determination (CPA-026 and attached maps) for exact boundaries and determinations or contact USDA Natural Resources Conservation Service (NRCS).