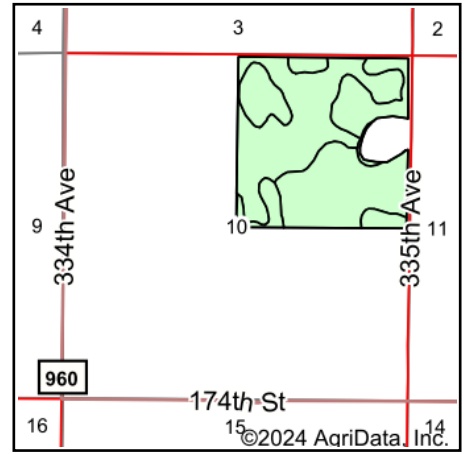
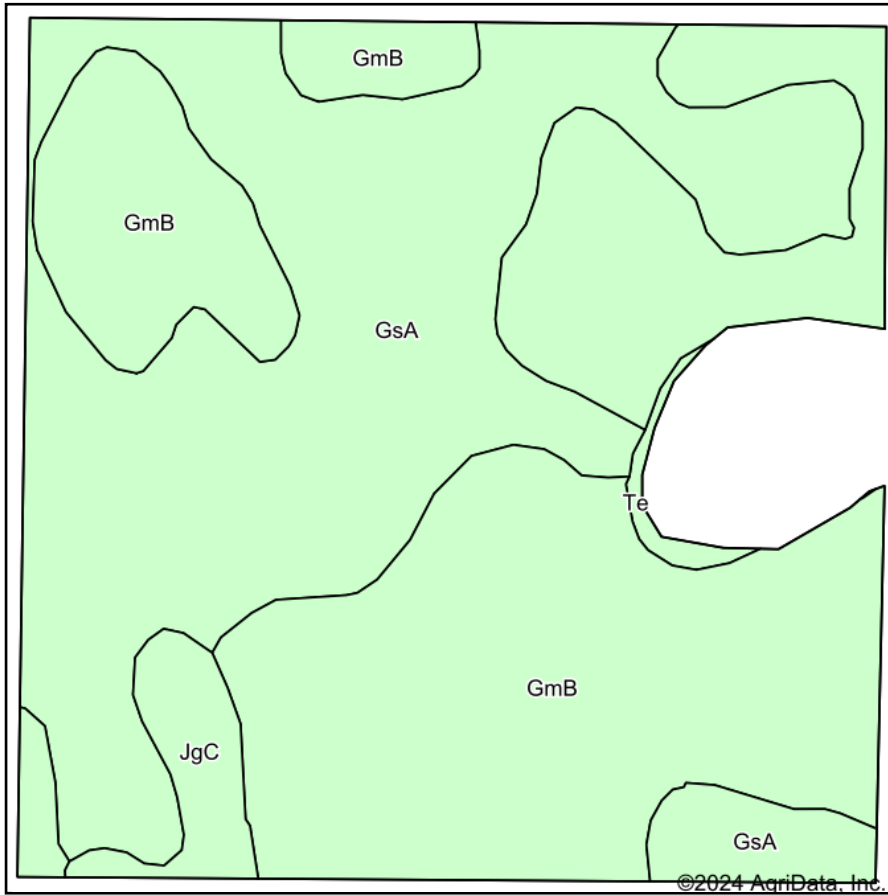


# Soils Map



State: **South Dakota**  
 County: **Hyde**  
 Location: **10-116N-72W**  
 Township: **North Hyde**  
 Acres: **145.39**  
 Date: **3/6/2024**

**ADVANTAGE**  
*Land Co.*

Maps Provided By:  
  
 CUSTOMIZED ONLINE MAPPING  
 © AgriData, Inc. 2023 www.AgriDataInc.com



Area Symbol: SD069, Soil Area Version: 27

Code	Soil Description	Acres	Percent of field	Non-Irr Class *c	Productivity Index
GmB	Glenham-Java-Prosper loams, 1 to 6 percent slopes	75.90	52.2%	Ile	77
GsA	Glenham-Prosper-Hoven complex, 0 to 4 percent slopes	63.99	44.0%	Ile	68
JgC	Java-Glenham loams, 6 to 9 percent slopes	4.53	3.1%	IVe	55
Te	Tetonka silt loam, 0 to 1 percent slopes	0.97	0.7%	IVw	56
<b>Weighted Average</b>				<b>2.08</b>	<b>72.2</b>

\*c: Using Capabilities Class Dominant Condition Aggregation Method