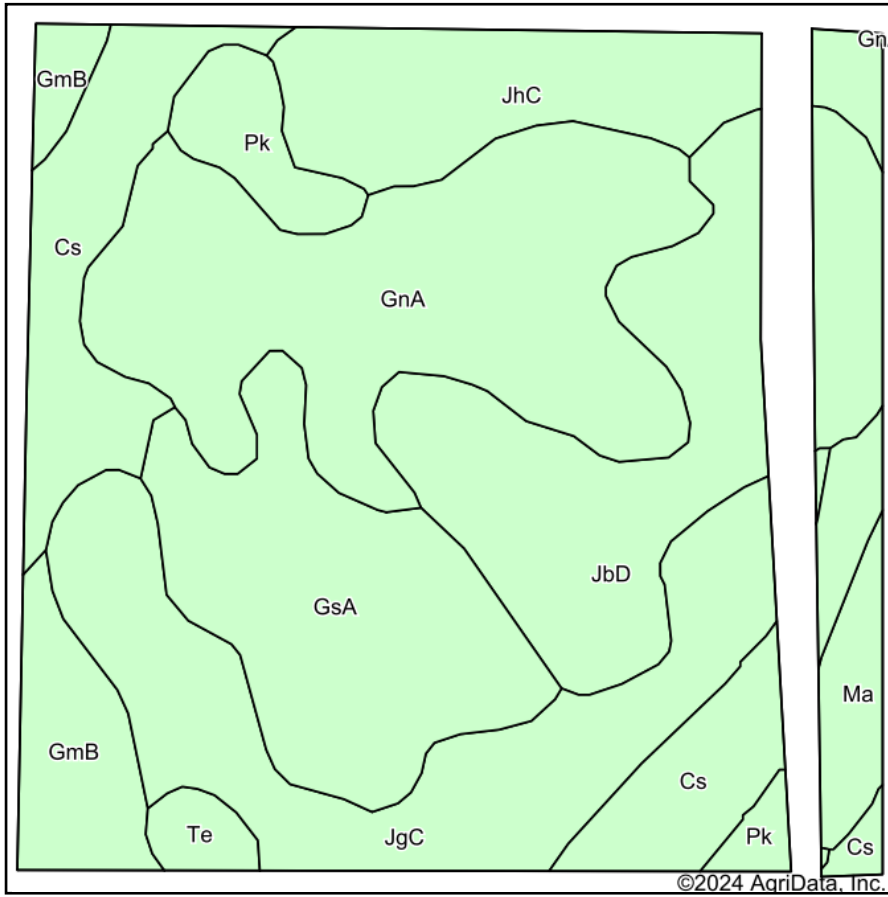
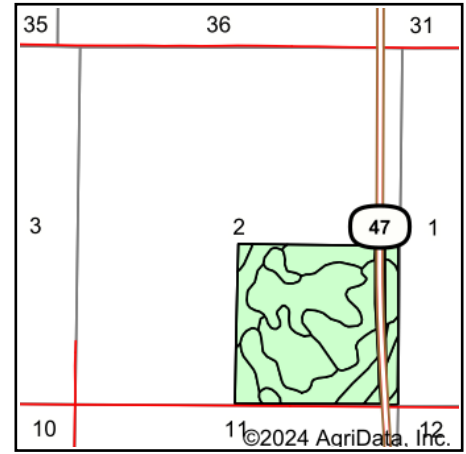


Soils Map



Soils data provided by USDA and NRCS.



State: **South Dakota**
 County: **Hyde**
 Location: **2-116N-72W**
 Township: **North Hyde**
 Acres: **150**
 Date: **3/6/2024**

ADVANTAGE
Land Co.

Maps Provided By:

 CUSTOMIZED ONLINE MAPPING
 © AgriData, Inc. 2023 www.AgriDataInc.com



Area Symbol: SD069, Soil Area Version: 27

Code	Soil Description	Acres	Percent of field	Non-Irr Class *c	Productivity Index
GnA	Glenham-Java-Cavo loams, 0 to 4 percent slopes	31.42	20.9%	IIc	65
JbD	Java-Betts loams, 6 to 15 percent slopes	24.85	16.6%	VIe	31
JgC	Java-Glenham loams, 6 to 9 percent slopes	22.64	15.1%	IVe	55
GsA	Glenham-Prosper-Hoven complex, 0 to 4 percent slopes	20.59	13.7%	IIe	68
Cs	Cavo-Stickney loams	18.56	12.4%	IVs	47
JhC	Java-Glenham-Prosper loams, 1 to 9 percent slopes	14.16	9.4%	IVe	61
GmB	Glenham-Java-Prosper loams, 1 to 6 percent slopes	7.73	5.2%	IIe	77
Pk	Plankinton silt loam	5.06	3.4%	IVw	51
Ma	Mackenz silty clay loam, 0 to 1 percent slopes	3.36	2.2%	Vw	27
Te	Tetonka silt loam, 0 to 1 percent slopes	1.63	1.1%	IVw	56
Weighted Average				3.56	54.9

*c: Using Capabilities Class Dominant Condition Aggregation Method

Soils data provided by USDA and NRCS.