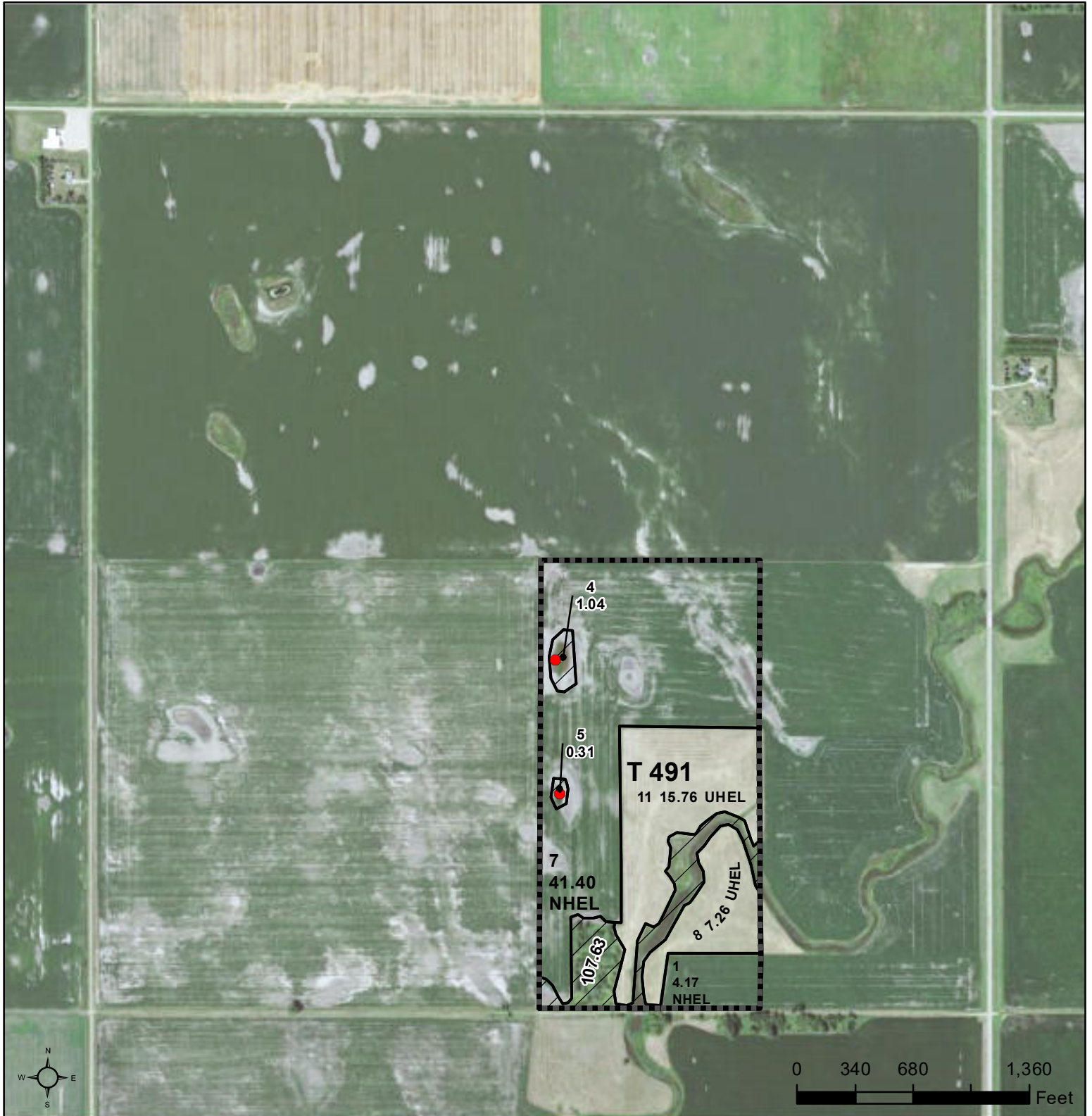




United States  
Department of  
Agriculture

## Spink County, South Dakota



**Common Land Unit** Tract Boundary  
 PLSS  
 Non-Cropland  
 Cropland

**Wetland Determination Identifiers**  
 Restricted Use  
 Limited Restrictions  
 Exempt from Conservation Compliance Provisions

Unless otherwise noted,  
crops listed below are:  
Non-irrigated  
Intended for Grain  
Corn = Yellow  
Soybeans = Common  
Wheat - HRS or HRW  
Sunflowers = Oil or Non

Producer initial \_\_\_\_\_  
Date \_\_\_\_\_

Tract Cropland Total: 68.59 acres

2024 Program Year  
Map Created January 22, 2024

Farm 1776  
Tract 491

12-114N-61W-Spink

United States Department of Agriculture (USDA) Farm Service Agency (FSA) maps are for FSA Program administration only. This map does not represent a legal survey or reflect actual ownership; rather it depicts the information provided directly from the producer and/or National Agricultural Imagery Program (NAIP) imagery. The producer accepts the data 'as is' and assumes all risks associated with its use. USDA-FSA assumes no responsibility for actual or consequential damage incurred as a result of any user's reliance on this data outside FSA Programs. Wetland identifiers do not represent the size, shape, or specific determination of the area. Refer to your original determination (CPA-026 and attached maps) for exact boundaries and determinations or contact USDA Natural Resources Conservation Service (NRCS).