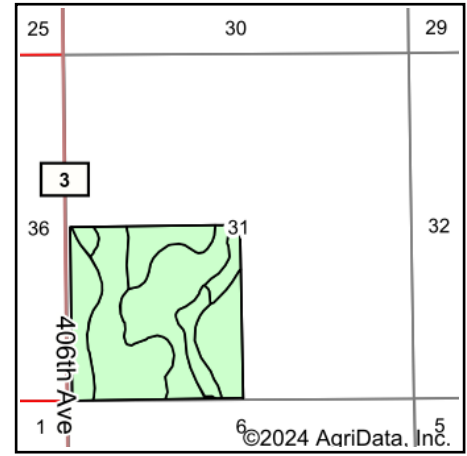
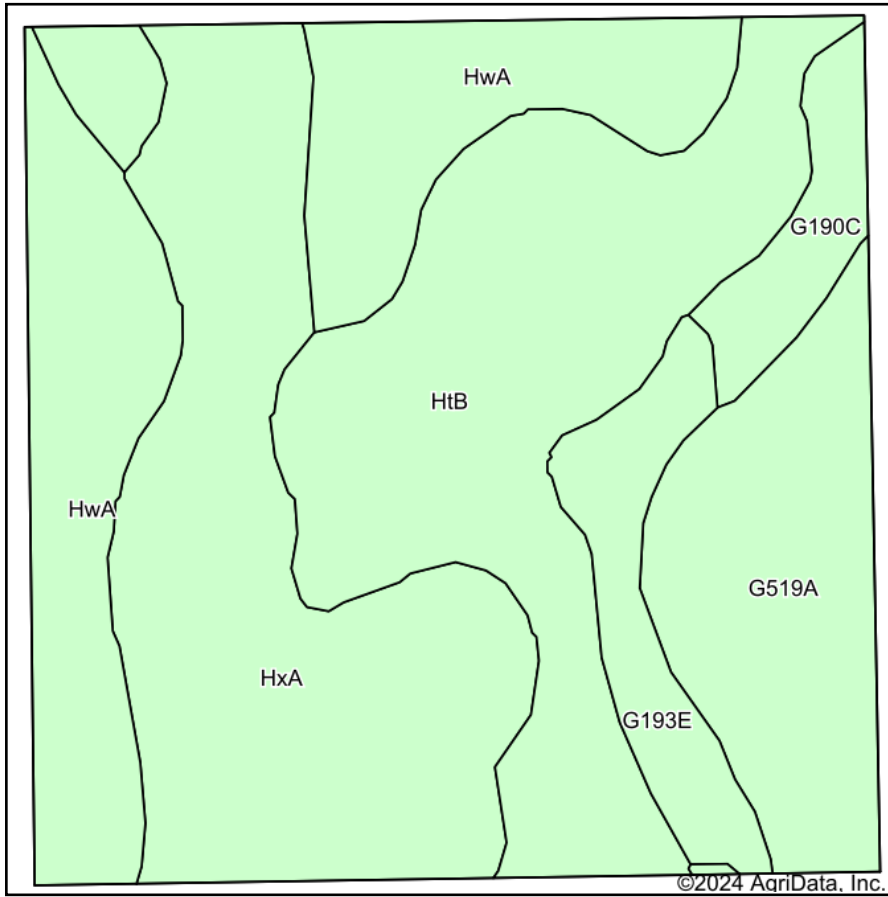


Soils Map



State: **South Dakota**
 County: **Spink**
 Location: **31-115N-60W**
 Township: **Capitola**
 Acres: **157.65**
 Date: **2/5/2024**

ADVANTAGE
Land Co.

Maps Provided By:

 CUSTOMIZED ONLINE MAPPING
 © AgriData, Inc. 2023 www.AgriDataInc.com



Area Symbol: SD115, Soil Area Version: 24

Code	Soil Description	Acres	Percent of field	Non-Irr Class *c	Productivity Index
HtB	Houdek-Ethan-Prosper loams, 1 to 6 percent slopes	44.45	28.2%	Ile	78
HxA	Houdek-Stickney-Tetonka complex, 0 to 2 percent slopes	43.32	27.5%	IIc	75
HwA	Houdek-Stickney complex, 0 to 2 percent slopes	33.36	21.2%	IIc	77
G519A	Moritz-Lowe, occasionally flooded loams, 0 to 2 percent slopes	21.35	13.5%	Ile	68
G193E	Buse-Vida, moist-Forman loams, 9 to 25 percent slopes	9.27	5.9%	VIe	29
G190C	Forman-Buse-Aastad loams, 3 to 9 percent slopes	5.80	3.7%	IIIe	65
G194F	Buse-Langhei-Forman loams, 15 to 40 percent slopes	0.10	0.1%	VIIe	23
Weighted Average				2.28	72.2

*c: Using Capabilities Class Dominant Condition Aggregation Method