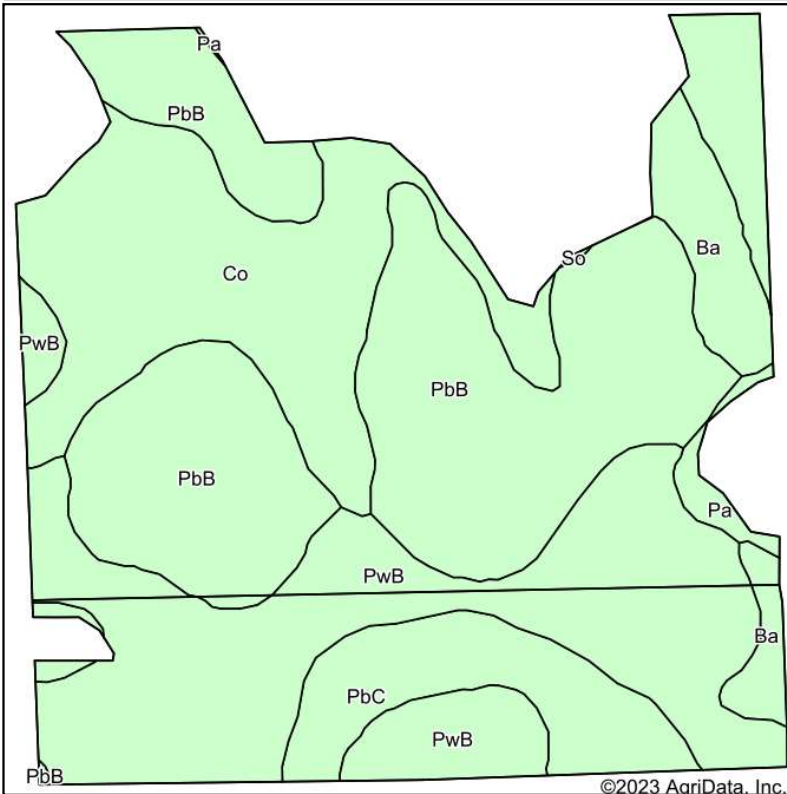
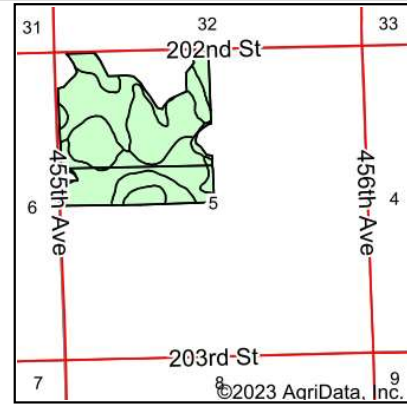


Soils Map



Soils data provided by USDA and NRCS.



State: **South Dakota**

County: **Brookings**

Location: **5-111N-52W**

Township: **Winsor**

Acres: **127.61**

Date: **11/22/2023**

ADVANTAGE

Land Co.

Maps Provided By:



© AgriData, Inc. 2023

www.AgriDataInc.com



Area Symbol: SD011, Soil Area Version: 31

Code	Soil Description	Acres	Percent of field	Non-Irr Class *c	Productivity Index
PbB	Poinsett-Buse-Waubay complex, 1 to 6 percent slopes	43.22	33.9%	Ile	81
PwB	Poinsett-Waubay silty clay loams, 1 to 6 percent slopes	41.01	32.1%	Ile	89
Co	Cubden-Badger silty clay loams, coteau, 0 to 2 percent slopes	25.69	20.1%	IIs	81
PbC	Poinsett-Buse-Waubay complex, 2 to 9 percent slopes	9.78	7.7%	IIIe	69
Ba	Badger silty clay loam, 0 to 1 percent slopes	6.64	5.2%	IIw	80
Pa	Parnell silty clay loam, 0 to 1 percent slopes	1.27	1.0%	Vw	32
Weighted Average				2.11	82.1

*c: Using Capabilities Class Dominant Condition Aggregation Method

Soils data provided by USDA and NRCS.