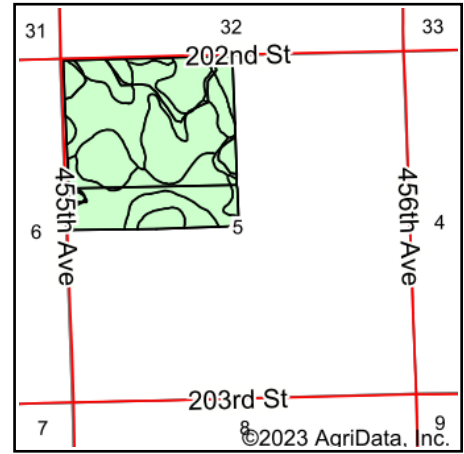
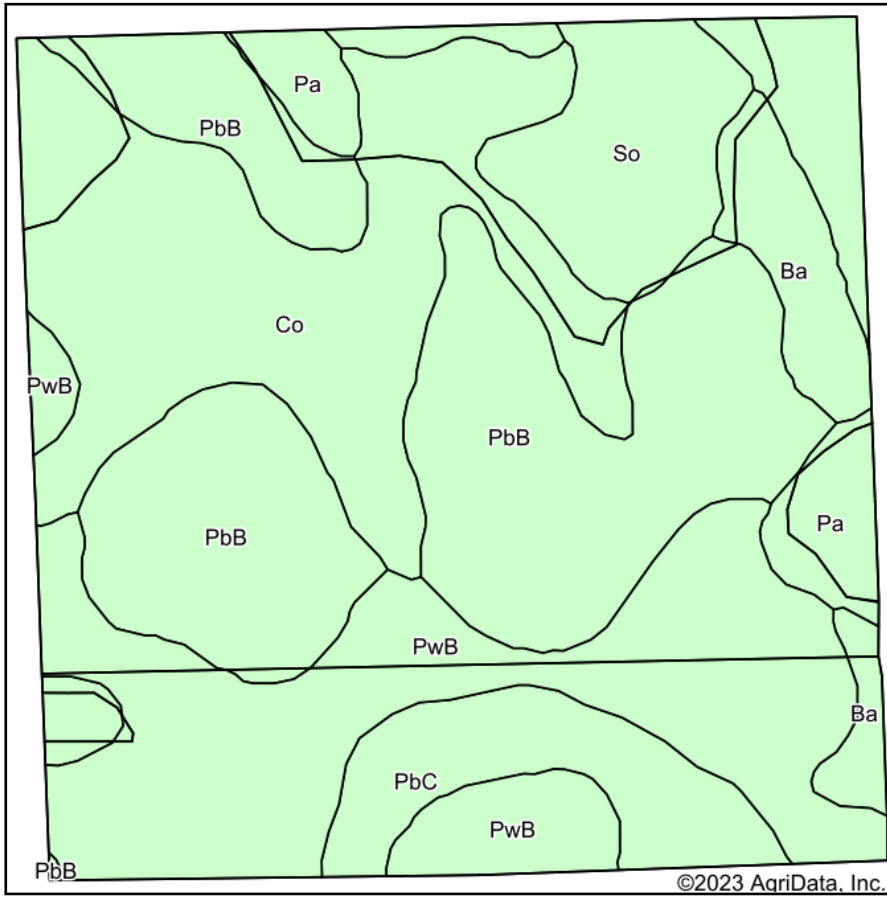


# Soils Map



State: **South Dakota**  
 County: **Brookings**  
 Location: **5-111N-52W**  
 Township: **Winsor**  
 Acres: **155.56**  
 Date: **11/22/2023**

**ADVANTAGE**  
*Land Co.*

Maps Provided By:  
  
 CUSTOMIZED ONLINE MAPPING  
 © AgriData, Inc. 2023 www.AgriDataInc.com



Area Symbol: SD011, Soil Area Version: 31

Code	Soil Description	Acres	Percent of field	Non-Irr Class *c	Productivity Index
PbB	Poinsett-Buse-Waubay complex, 1 to 6 percent slopes	45.07	29.0%	Ile	81
PwB	Poinsett-Waubay silty clay loams, 1 to 6 percent slopes	41.70	26.8%	Ile	89
Co	Cubden-Badger silty clay loams, coteau, 0 to 2 percent slopes	35.57	22.9%	Ils	81
So	Southam silty clay loam, 0 to 1 percent slopes	10.46	6.7%	VIIIw	10
PbC	Poinsett-Buse-Waubay complex, 2 to 9 percent slopes	9.78	6.3%	IIIle	69
Ba	Badger silty clay loam, 0 to 1 percent slopes	7.22	4.6%	IIw	80
Pa	Parnell silty clay loam, 0 to 1 percent slopes	5.76	3.7%	Vw	32
<b>Weighted Average</b>				<b>2.58</b>	<b>75.8</b>

\*c: Using Capabilities Class Dominant Condition Aggregation Method  
 Soils data provided by USDA and NRCS.