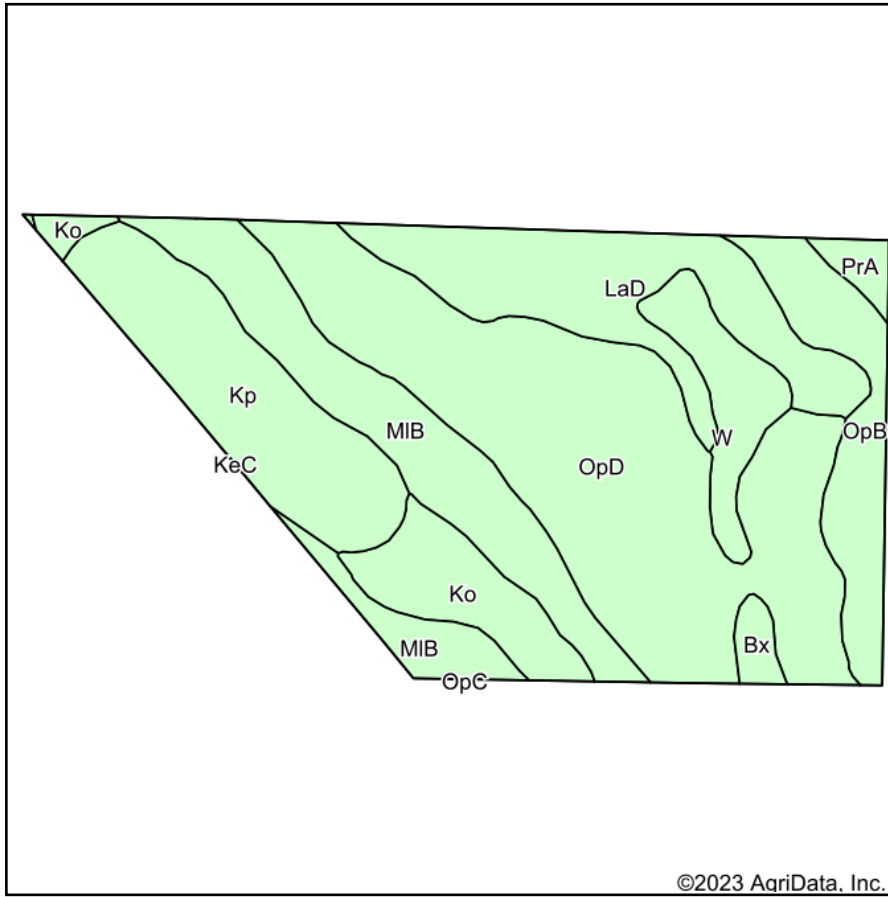
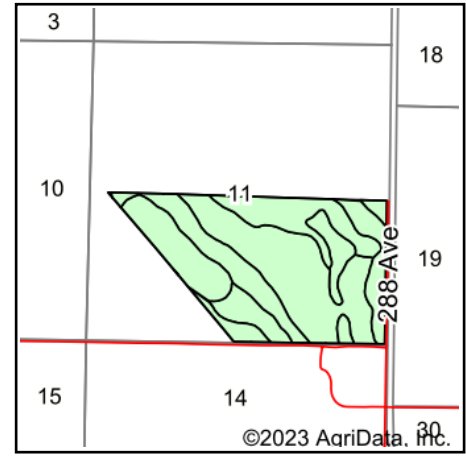


Soils Map



Soils data provided by USDA and NRCS.



State: **South Dakota**
 County: **Jones**
 Location: **11-2S-31E**
 Township: **Williams Creek**
 Acres: **226.18**
 Date: **9/21/2023**

ADVANTAGE
Land Co.

Maps Provided By:

 CUSTOMIZED ONLINE MAPPING
 © AgriData, Inc. 2023 www.AgriDataInc.com



Area Symbol: SD075, Soil Area Version: 26

Code	Soil Description	Acres	Percent of field	Non-Irr Class *c	Irr Class *c	Productivity Index
OpD	Opal clay, 6 to 15 percent slopes	80.01	35.4%	Vle	Vle	48
MIB	Millboro silty clay, 3 to 6 percent slopes	35.32	15.6%	IIle	IIle	79
LaD	Lakoma silty clay, 6 to 15 percent slopes	30.94	13.7%	Vle	Vle	43
Kp	Kolls silty clay, ponded	30.61	13.5%	VIIIw	VIIIw	5
OpB	Opal clay, 3 to 6 percent slopes	18.10	8.0%	IIle	IIle	60
Ko	Kolls silty clay	14.97	6.6%	Vw	Vw	30
W	Water	11.15	4.9%	VIII		0
PrA	Promise clay, 0 to 3 percent slopes	2.61	1.2%	IIIs	IIIs	68
Bx	Bullcreek-Slickspots complex, 0 to 6 percent slopes	2.47	1.1%	VIIs	VIIs	9
Weighted Average				5.56	*-	43.5

*c: Using Capabilities Class Dominant Condition Aggregation Method

*- Irr Class weighted average cannot be calculated on the current soils data due to missing data.

Soils data provided by USDA and NRCS.