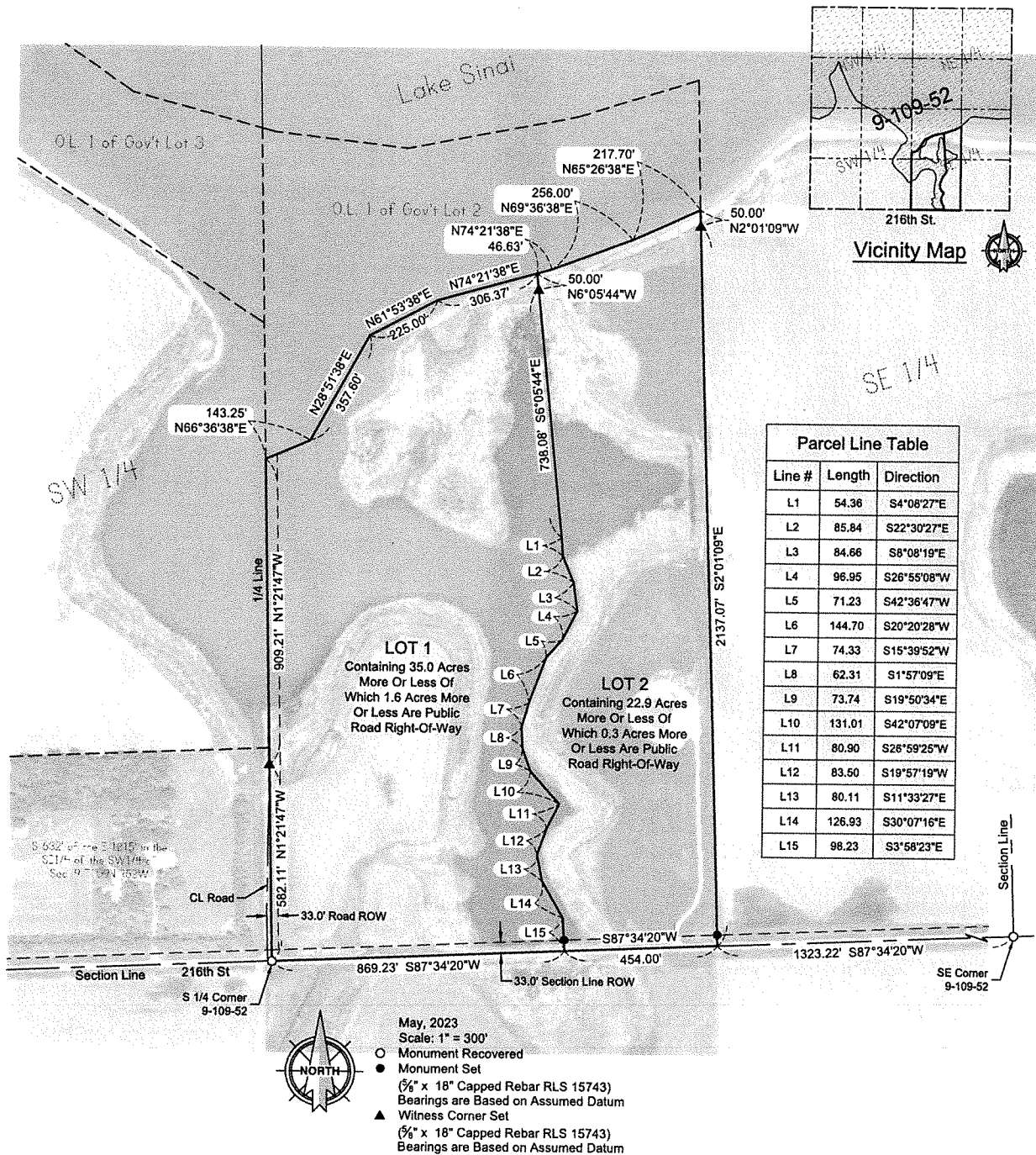


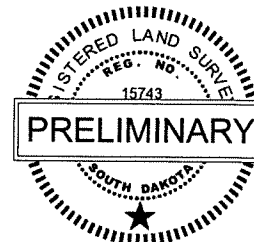
PLAT OF
LOTS 1 AND 2 OF STIME ADDITION IN THE SW ¼ OF THE SE ¼ OF SECTION 9,
T109N, R52W OF THE 5TH P.M., BROOKINGS COUNTY, SOUTH DAKOTA.



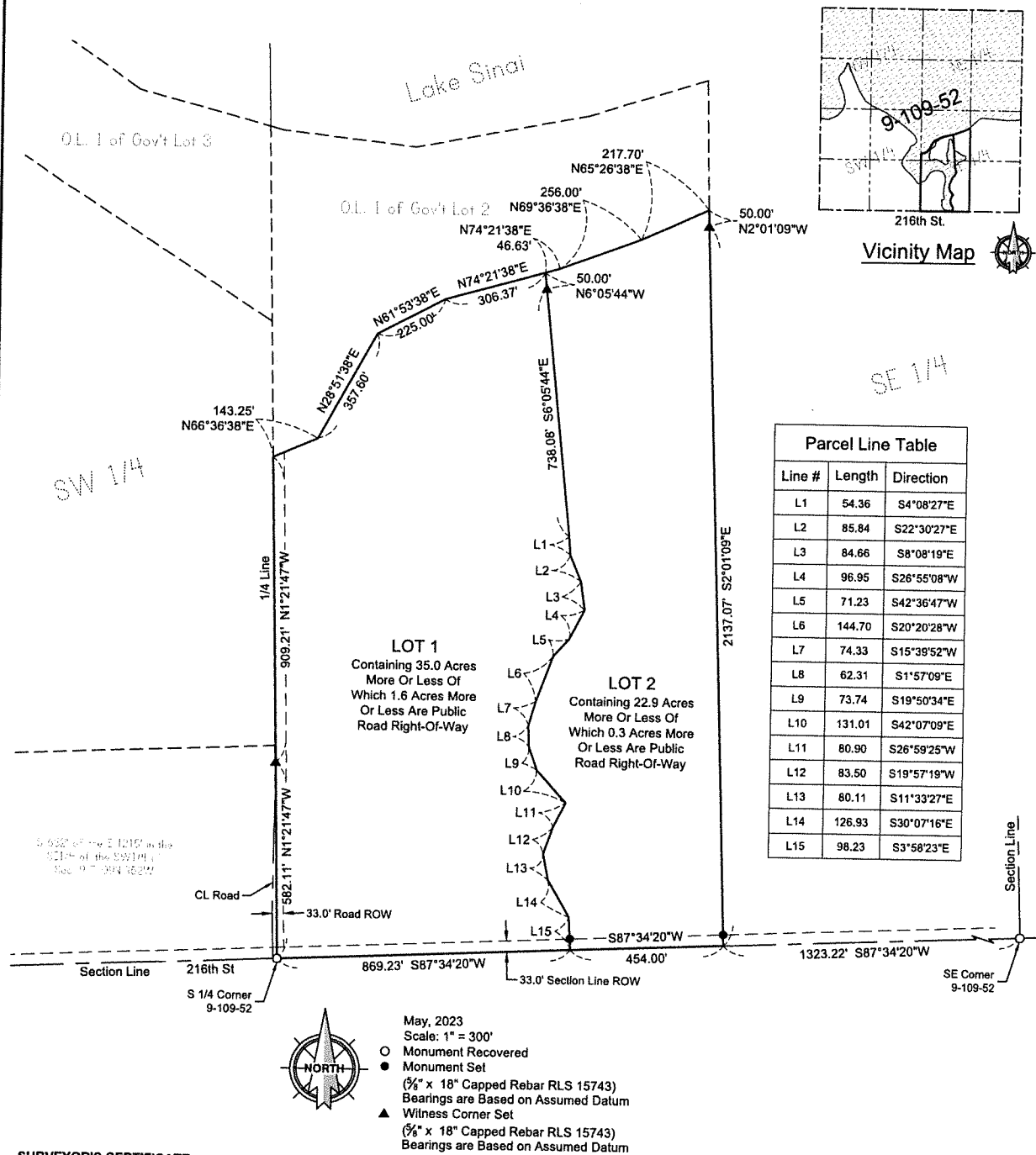
Prepared By:



Civil Engineers & Land Surveyors
 Brookings, South Dakota
 Ph. 605-696-3200



PLAT OF
LOTS 1 AND 2 OF STIME ADDITION IN THE SW 1/4 OF THE SE 1/4 OF SECTION 9,
T109N, R52W OF THE 5TH P.M., BROOKINGS COUNTY, SOUTH DAKOTA.



Prepared By:



Civil Engineers & Land Surveyors
 Brookings, South Dakota
 Ph. 605-696-3200

