



United States  
Department of  
Agriculture

## Hand County, South Dakota



Common Land Unit ☐ PLSS

☒ Non-Cropland

☒ Tract Boundary

### Wetland Determination Identifiers

☒ Restricted Use

☒ Limited Restrictions

☒ Exempt from Conservation  
Compliance Provisions

Unless otherwise noted, crops listed below are:

Non-Irrigated

Intended for Grain

Corn = Yellow

Soybeans = Common

Wheat - HRS or HRW

Sunflowers = Oil or Non-oil

Producer initial \_\_\_\_\_

Date \_\_\_\_\_

2023 Program Year

Map Created April 03, 2023

Farm 362

13-116N-70W-Hand

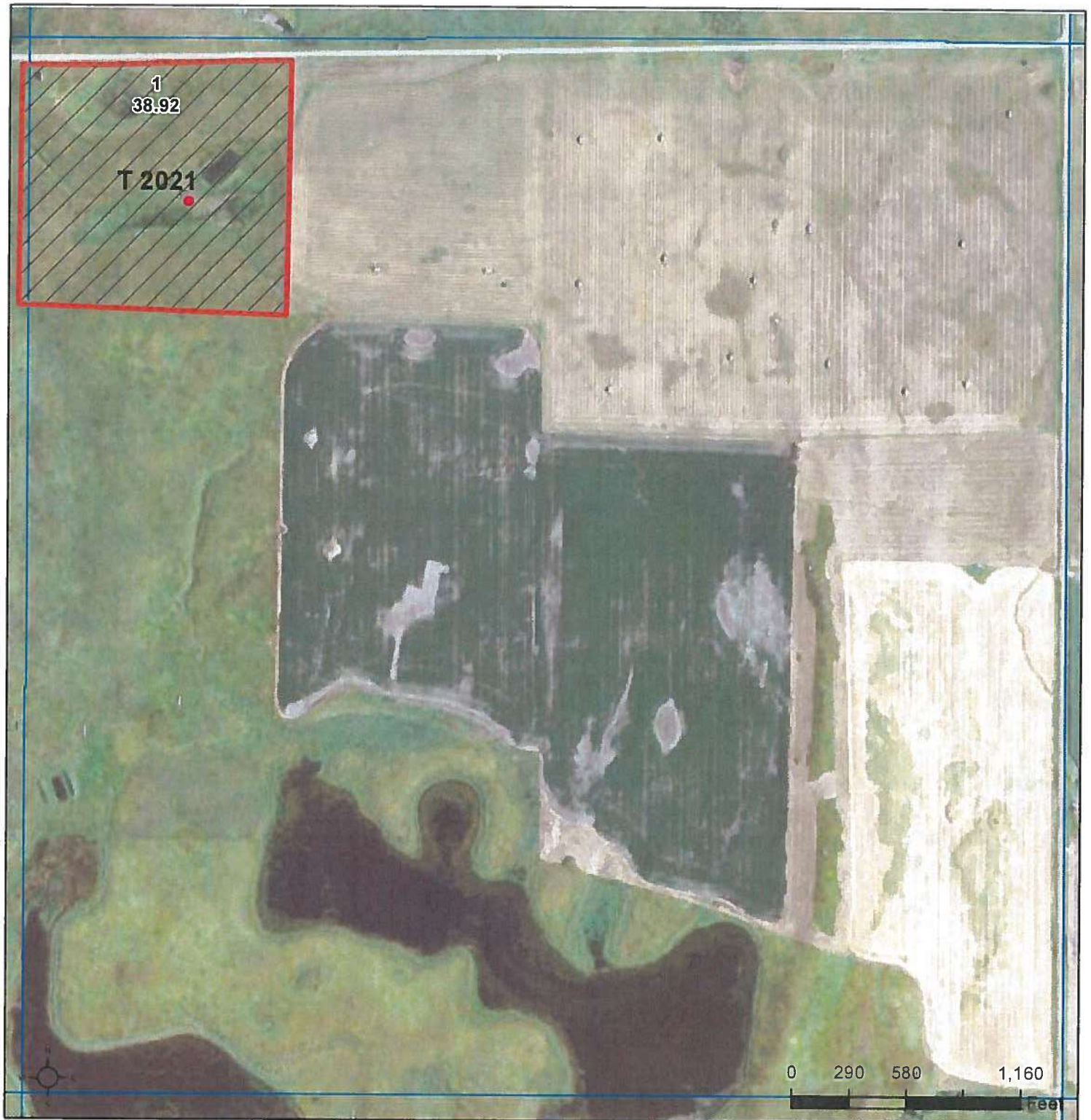
United States Department of Agriculture (USDA) Farm Service Agency (FSA) maps are for FSA Program administration only. This map does not represent a legal survey or reflect actual ownership; rather it depicts the information provided directly from the producer and/or National Agricultural Imagery Program (NAIP) imagery. The producer accepts the data 'as is' and assumes all risks associated with its use. USDA-FSA assumes no responsibility for actual or consequential damage incurred as a result of any user's reliance on this data outside FSA Programs. Wetland identifiers do not represent the size, shape, or specific determination of the area. Refer to your original determination (CPA-026 and attached maps) for exact boundaries and determinations or contact USDA Natural Resources Conservation Service (NRCS).





United States  
Department of  
Agriculture

## Hand County, South Dakota



Common Land Unit ☐ PLSS

☒ Non-Cropland

☒ Tract Boundary

### Wetland Determination Identifiers

☒ Restricted Use

☐ Limited Restrictions

☐ Exempt from Conservation  
Compliance Provisions

Unless otherwise noted, crops listed below are:

Non-irrigated

Intended for Grain

Corn = Yellow

Soybeans = Common

Wheat - HRS or HRW

Sunflowers = Oil or Non-oil

Producer initial \_\_\_\_\_

Date \_\_\_\_\_

2023 Program Year

Map Created April 03, 2023

Farm 374

13-116N-70W-Hand

United States Department of Agriculture (USDA) Farm Service Agency (FSA) maps are for FSA Program administration only. This map does not represent a legal survey or reflect actual ownership; rather it depicts the information provided directly from the producer and/or National Agricultural Imagery Program (NAIP) imagery. The producer accepts the data 'as is' and assumes all risks associated with its use. USDA-FSA assumes no responsibility for actual or consequential damage incurred as a result of any user's reliance on this data outside FSA Programs. Wetland identifiers do not represent the size, shape, or specific determination of the area. Refer to your original determination (CPA-026 and attached maps) for exact boundaries and determinations or contact USDA Natural Resources Conservation Service (NRCS).