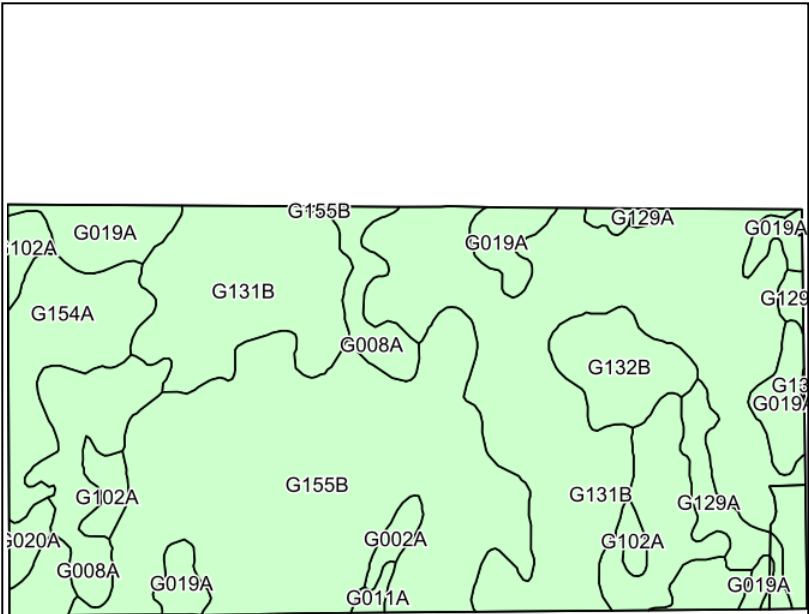
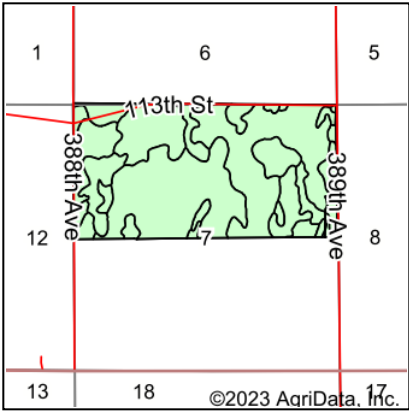


Soils Map



©2023 AgriData, Inc.



State: **South Dakota**
County: **Brown**
Location: **7-126N-63W**
Township: **Brainard**
Acres: **319.42**
Date: **4/4/2023**

ADVANTAGE
Land Co.

Maps Provided By:
surety
CUSTOMIZED ONLINE MAPPING
© AgriData, Inc. 2023 www.AgrIDataInc.com



Soils data provided by USDA and NRCS.

Area Symbol: SD013, Soil Area Version: 28					
Code	Soil Description	Acres	Percent of field	Non-Irr Class *c	Productivity Index
G131B	Barnes-Cresbard-Tonka complex, 0 to 6 percent slopes	116.65	36.5%	Ile	69
G155B	Barnes-Svea loams, 0 to 6 percent slopes	88.22	27.6%	Ile	82
G019A	Rimlap-Heil, till substratum silt loams, 0 to 1 percent slopes	23.18	7.3%	IVw	26
G154A	Barnes-Svea-Tonka complex, 0 to 3 percent slopes	21.78	6.8%	Ilc	77
G008A	Tonka-Rimlap silt loams, 0 to 1 percent slopes	20.86	6.5%	IVw	42
G002A	Tonka silt loam, 0 to 1 percent slopes	14.65	4.6%	IVw	42
G132B	Barnes-Ferney-Tonka complex, 0 to 6 percent slopes	11.15	3.5%	Ile	59
G129A	Cavour-Ferney loams, 0 to 3 percent slopes	8.64	2.7%	IVs	35
G102A	Hamerly loam, 0 to 3 percent slopes	7.42	2.3%	Ile	83
G123A	Svea-Cavour loams, 0 to 3 percent slopes	3.43	1.1%	Ilc	73
G020A	Koto loam, 0 to 1 percent slopes	2.35	0.7%	IVw	56
G011A	Vallers clay loam, 0 to 3 percent slopes	1.03	0.3%	IVw	41
G131A	Barnes-Cresbard-Tonka complex, 0 to 3 percent slopes	0.06	0.0%	Ilc	72
Weighted Average				2.44	65.9

*c: Using Capabilities Class Dominant Condition Aggregation Method

Soils data provided by USDA and NRCS.